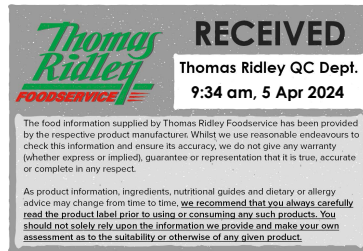


Changed Apr 02, 2024 14:46

Reviewed Apr 02, 2024 14:46

Erudus ID 31c59dd2faa24ae3b2ec1a4376fdde7f

Version 2.0



Thomas Ridley
FOODSERVICE

RECEIVED
Thomas Ridley QC Dept.
9:34 am, 5 Apr 2024

The food information supplied by Thomas Ridley Foodservice has been provided by the respective product manufacturer. Whilst we use reasonable endeavours to check this information and ensure its accuracy, we do not give any warranty (whether express or implied), guarantee or representation that it is true, accurate or complete in any respect.

As product information, ingredients, nutritional guides and dietary or allergy advice may change from time to time, we recommend that you always carefully read the product label prior to using or consuming any such products. You should not solely rely upon the information we provide and make your own assessment as to the suitability or otherwise of any given product.



Chicken Flavoured Vegan Stock Mix 800g

Chicken Flavoured Vegan Stock Mix 2x800g

PRODUCT DESCRIPTION

A composite material produced by the dry blending of food ingredients. A light yellowish-brown coloured free-flowing powder, with a distinctive odour of chicken. It has the characteristic appearance and flavour of Chicken Stock when reconstituted with water.

Brand	Essential Cuisine Limited
Manufacturer Product Code	SW00323 - ECHALCTS/3
Manufacturer Version	1
Number	
Effective Date	Aug 29, 2023
Product Type	Food
Product Category	Gravy / Bouillon
Storage Type	Ambient
Erudus ID	31c59dd2faa24ae3b2ec1a4376fdde7f
Specification Type	Generic
Inner Component GTIN	5029540000986
Outer Case GTIN	05029540000993



INGREDIENTS

Ingredient Declaration

Ingredients when reconstituted:

Vegetable Stock (Water, Onion, Carrot Juice, Tomato, Herb Extract), Glucose Syrup, Flavourings, Salt, Yeast Extracts, Maltodextrin, Sugar, Sunflower Oil.

ALLERGENS

Product Contains:

Celery/Celeriac	No	Mustard	No
Cereals Containing Gluten	No	Nuts (Tree)	No
Barley	No	Almond nuts	No
Oats	No	Brazil nuts	No
Rye	No	Cashew nuts	No
Wheat (including Spelt and Khorasan)	No	Hazelnuts	No
Crustacea	No	Macadamia (Queensland) nuts	No
Eggs	No	Pecan nuts	No
Fish	No	Pistachio nuts	No
Lupin	No	Walnuts	No
Milk	No	Peanuts	No
Molluscs	No	Sesame Seeds	No
		Soybeans	No
		Sulphur Dioxide and Sulphites	No

Additional Allergen Information

N/A

FREE FROM CLAIMS

Gluten-Free Yes

SUPPLEMENTARY INGREDIENT INFORMATION

Palm Oil No

Hydrogenated Vegetable Oil/Fat No

GM Protein/DNA No

ADDITIVES

Product Contains:

Artificial Antioxidants No

Artificial Flavourings Yes

Artificial Colours No

Artificial Preservatives No

Artificial Flavour Enhancers No

Artificial Sweeteners No

DIET SUITABILITY

Vegan Diet Suitable for

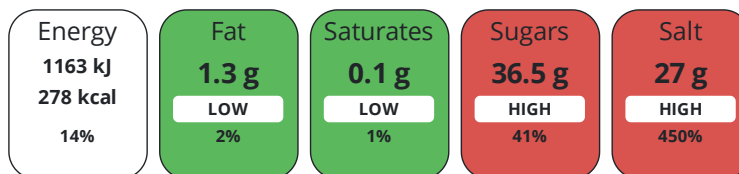
Vegetarian Diet Suitable for

Halal Diet Certified

Kosher Diet No

NUTRITIONAL INFORMATION

Each 100g/ml portion contains:



of your reference intake.

Typical values per 100g/ml : Energy 278kcal / 1163kJ

Nutrient	per 100g	RI per 100g
Energy (kJ)	1163 kJ	14%
Energy (kcal)	278 kcal	14%
Fat	1.3 g	2%
of which Saturates	0.1 g	1%
Carbohydrate	52.6 g	20%
of which Sugars	36.5 g	41%
Fibre	0.4 g	
Protein	13.8 g	28%
Salt	27 g	450%

SUPPLEMENTARY NUTRITIONAL INFORMATION

HANDLING & STORAGE INFORMATION

Directions For Use

To make stock, simply add the required amount of stock mix (12 - 20g) into 1 litre (1.75 pints) of boiling water and stir until dissolved.

Storage Instructions

Always reseal after use and keep in a cool, dry place.

Shelf Life from Time of Production 547 Days

Exempt From Shelf Life Labelling No

ACCREDITATIONS/ CERTIFICATIONS/ ASSURANCE SCHEMES ORIGIN

BRCGS Certified

Food for Life Supplier Scheme

Other Accreditation

Product Country of Origin/Place of United Kingdom

Provenance

Additional Origin Details

Manufactured in the UK using materials from EU and non-EU countries

PRODUCT CHARACTERISTICS CONFIGURATION	Standards Testing							
	Case Configuration					Inner Pack Configuration		
	Total Quantity of Inner Components in Outer Case	2 Units						
PRODUCT WEIGHTS	Is the Outer Case Splittable?	Yes						
	Inner Component							
	Variable Weight Consumer Item	No						
	Inner Component Weight	800 g						
	Outer Case							
	Outer Case Gross Weight	1.9 kg						
	Outer Case Net Weight	1.6 kg						
PRODUCT DIMENSIONS	Inner Component							
	Inner Component Depth	132 mm						
	Inner Component Width	132 mm						
	Inner Component Height	132 mm						
	Outer Case							
	Outer Case Depth	270 mm						
	Outer Case Width	140 mm						
	Outer Case Height	145 mm						
PALLET INFORMATION	Quantity of Cases Per Pallet Layer	28 Cases			Pallet Height	1.3 MTR		
	Quantity of Layers Per Pallet	8 Layers			Pallet Gross Weight	456.6 kg		
	Quantity of Cases Per Pallet	224 Cases						
PACKAGING	Inner Component Packaging							
	Type	Materials	Weight	Recycled Plastic %	Recyclable	Returnable	Composite	
	Tub	Plastic	68 g	- %				
	Outer Case Packaging							
	Type	Materials	Weight	Recycled Plastic %	Recyclable	Returnable	Composite	
	Case	Paper/Cardboard	95 g	- %				
	Transport Packaging							
	Type	Materials	Weight	Recycled Plastic %	Recyclable	Returnable	Composite	
	Other	Plastic	500 g	- %				
	Other	Paper/Cardboard	500 g	- %				
	Other	Wood	30000 g	- %				
	MARKETING INFORMATION	Marketing Description	Subtle aroma of boiled chicken combined with vegetables creates excellence. This is a well balanced stock, free from artificial preservatives and colours. Approved by the Halal Food Authority.					
	OTHER INFORMATION	Intrastat/Taric Code	2103					
		Manufacturer Comments	N/A					

CONTACT
INFORMATION

Address

Essential Cuisine Limited
Essential Cuisine Ltd
Browning Way
Winsford
Cheshire
CW7 2RH
United Kingdom

P. (Phone) 01606 541490

The information on the [Erudus System](#) has been supplied by the manufacturers of the products and, whilst the owners of the Erudus System take steps to ensure the information is regularly updated, they give no warranty and no guarantee that the information is accurate. Product information and ingredients may change, please always read product labels carefully in addition to using the information provided by Erudus.

We do not accept liability for any inaccuracies or incorrect information contained on this site.
Please visit <http://www.erudus.com/terms-and-conditions> for full terms and conditions.