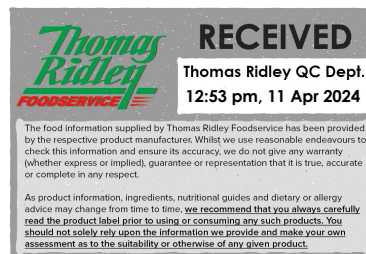


Changed Apr 09, 2024 12:49

Erudus ID f10502e22d814931b553cf44bd6d7ac5

Version 2.0



22015

# GF Cranberry & Pecan Flapjack (1 x 18)

Gf Cranberry & Pecan Flapjack (1 X 18)

## PRODUCT DESCRIPTION

Individually wrapped. Syrupy flapjack made with gluten-free oats, dried cranberries and pecans, studded with sunflower and pumpkin seeds. Wheat, gluten and milk-free. Suitable for vegetarians, vegans and coeliacs. Defrosted shelf-life = 28 days. (1 x 18)

Brand	Central Foods Group Ltd
Manufacturer Product Code	WLC0621
Product Type	Food
Product Category	Bakery - General
Storage Type	Frozen
Erudus ID	f10502e22d814931b553cf44bd6d7ac5
Specification Type	Legacy



Inner Component GTIN 5028931006217

Outer Case GTIN 05028931176217



## INGREDIENTS

### Ingredient Declaration

Gluten-Free **OATS** (37%), Golden Syrup, Palm Oil, Brown Sugar, **PECAN NUTS** (4%), Oligofructose, Rapeseed Oil, Dried Sweetened Cranberries (4%) (Cranberries, Sugar), Sunflower Seeds (3%), Desiccated Coconut, Water, Pumpkin Seeds (3%), Flavouring, Emulsifier (E471), Salt.

## ALLERGENS

Product Contains:

<b>Celery/Celeriac</b>	No	<b>Mustard</b>	No
<b>Cereals Containing Gluten</b>	Yes	<b>Nuts (Tree)</b>	Yes
<b>Barley</b>	No	<b>Almond nuts</b>	May Contain
<b>Oats</b>	Yes	<b>Brazil nuts</b>	May Contain
<b>Rye</b>	No	<b>Cashew nuts</b>	May Contain
<b>Wheat (including Spelt and Khorasan)</b>	No	<b>Hazelnuts</b>	May Contain
<b>Gluten content &lt;20ppm</b>	Yes	<b>Macadamia (Queensland) nuts</b>	No
<b>Crustacea</b>	No	<b>Pecan nuts</b>	Yes
<b>Eggs</b>	May Contain	<b>Pistachio nuts</b>	May Contain
<b>Fish</b>	No	<b>Walnuts</b>	May Contain
<b>Lupin</b>	No	<b>Peanuts</b>	May Contain
<b>Milk</b>	No	<b>Sesame Seeds</b>	No
<b>Molluscs</b>	No	<b>Soybeans</b>	No
		<b>Sulphur Dioxide and Sulphites</b>	No

Risk Source:

### Additional Allergen Information

For allergens, see ingredients in CAPITALS.

SUPPLEMENTARY  
INGREDIENT  
INFORMATION

<b>Palm Oil</b>	Yes
<b>Hydrogenated Vegetable Oil/Fat</b>	No
<b>GM Protein/DNA</b>	No

ADDITIVES

Product Contains:

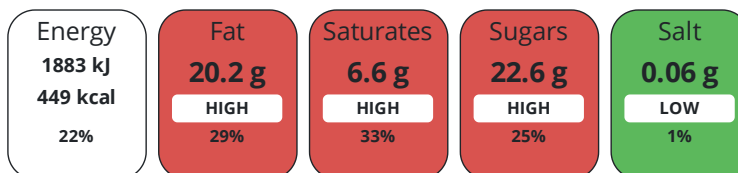
<b>Artificial Antioxidants</b>	No	<b>Artificial Flavourings</b>	No
<b>Artificial Colours</b>	No	<b>Artificial Preservatives</b>	No
<b>Artificial Flavour Enhancers</b>	No	<b>Artificial Sweeteners</b>	No

DIET  
SUITABILITY

<b>Suitable for Coeliacs</b>	Yes	<b>Halal Diet</b>	No
<b>Kosher Diet</b>	No	<b>Vegetarian Diet</b>	Suitable for
<b>Vegan Diet</b>	Suitable for		

NUTRITIONAL  
INFORMATION

Each 100g/ml portion contains:



of your reference intake.

Typical values per 100g/ml : Energy 449kcal / 1883kj

Nutrient	per 100g/ml	RI per 100g/ml	per 50g/ml serving	RI per 50g/ml serving
<b>Energy (kJ)</b>	1883 kJ	22%	941.5 kJ	11%
<b>Energy (kcal)</b>	449 kcal	22%	224.5 kcal	11%
<b>Fat</b>	20.2 g	29%	10.1 g	14%
<b>of which Saturates</b>	6.6 g	33%	3.3 g	17%
<b>Carbohydrate</b>	57 g	22%	28.5 g	11%
<b>of which Sugars</b>	22.6 g	25%	11.3 g	13%
<b>Fibre</b>	4.6 g		2.3 g	
<b>Protein</b>	7.5 g	15%	3.8 g	8%
<b>Salt</b>	0.06 g	1%	-	
<b>Sodium</b>	24 mg		12 mg	

**Serving Size** 50 g

SUPPLEMENTARY  
NUTRITIONAL  
INFORMATION

HFSS (HIGH IN  
FAT, SALT AND  
SUGAR)

**HFSS Status** Yes

HANDLING &  
STORAGE  
INFORMATION

**Directions For Use**

From Frozen unless otherwise stated Defrost at room temperature for 6 hours. Once defrosted do not refreeze. Once defrosted, label each individual product with Best Before Date: date of defrost + 28 days. To maintain gluten-free and vegan integrity, please ensure all equipment used for gluten-free and vegan preparation/cooking/serving is clean or dedicated for gluten-free and vegan use only.

**Storage Instructions**

Keep Frozen. Store at -18°C or below

**Shelf Life from Time of Production** 342 Days

ACCREDITATIONS/  
CERTIFICATIONS/  
ASSURANCE  
SCHEMES  
ORIGIN

**BRCGS Certified**

**Other Accreditation**

**Roundtable of Sustainable Palm Oil (RSPO)**

**Product Country of Origin/Place of** United Kingdom

**Provenance**

**Additional Origin Details**

United Kingdom

PRODUCT  
CHARACTERISTICS

Standards Testing

**Do you undertake trend analysis of** No

**Is shelf life testing undertaken?** No

**microbiological results?**

Microbiological Standards

Organism	Description	Frequency	Target	Maximum	Sample (g or ml)
Bacillus Cereus (cfu/g or ml)		Quarterly	<1000	1000	-
E. Coli (cfu/g or ml)		Quarterly	<100	100	-
Enterobacteriaceae (cfu/g or ml)		Quarterly	<1000	1000	-
Staphylococcus Aureus (cfu/g or ml)		Quarterly	<100	100	-
Total Viable Count (TVC) (cfu/g or ml)		Quarterly	<5000	5000	-
Salmonella (cfu/g or ml)	Not detected in 25g	Quarterly	=0	0	25
Yeast (cfu/g or ml)		Quarterly	<1000	1000	-
Moulds (cfu/g or ml)		Quarterly	<1000	1000	-

CONFIGURATION

Case Configuration

Inner Pack Configuration

**Total Quantity of Inner Components in** 18 Units

**Outer Case**

**Is the Outer Case Splittable?** No

PRODUCT  
WEIGHTS

Inner Component

**Variable Weight Consumer Item** No

**Net Drained Weight** 0 kg

**Weight/Volume**

N/A

Outer Case

**Outer Case Gross Weight** 1.03 kg

**Outer Case Net Weight** 0.9 kg

PRODUCT  
DIMENSIONS

Inner Component

**Inner Component Depth** 0 mm

**Inner Component Width** 0 mm

**Inner Component Height** 0 mm

Outer Case

**Outer Case Depth** 270 mm

**Outer Case Width** 115 mm

**Outer Case Height** 90 mm

PALLET  
INFORMATION

**Quantity of Cases Per Pallet Layer** 30 Cases

**Pallet Height** 1.05 MTR

**Quantity of Layers Per Pallet** 10 Layers

**Pallet Gross Weight** 324 kg

**Quantity of Cases Per Pallet** 300 Cases

PACKAGING

Inner Component Packaging

Type	Materials	Weight	Recycled Plastic %	Recyclable	Returnable	Composite
Paper/Polyethylene	Plastic	9 g	- %			
Paper/Polyethylene	Paper/Cardboard	121 g	- %			

Transport Packaging

Type	Materials	Weight	Recycled Plastic %	Recyclable	Returnable	Composite
Other	Plastic	280 g	- %		Yes	

OTHER INFORMATION CONTACT INFORMATION

Address

Central Foods Group Ltd  
 Maple Court  
 Ash Lane, Collingtree  
 Collingtree  
 Northants  
 NN4 0NB  
 England

P: (Phone) 01604 858 522

Complaints Contact

Karen Wright  
 Customer Care Admin Assistant  
 kwright@centralfoods.co.uk

P: (Phone) 01604 878 299

Technical Contact

Chris Stobart  
 Technical Manager  
 technical@centralfoods.co.uk

P: (Phone) 01604 878 276

Commercial Contact

Oliver Sampson  
 Commercial Manager  
 osampson@centralfoods.co.uk

P: (Phone) 07715 073 273

The information on the [Erudus System](#) has been supplied by the manufacturers of the products and, whilst the owners of the Erudus System take steps to ensure the information is regularly updated, they give no warranty and no guarantee that the information is accurate. Product information and ingredients may change, please always read product labels carefully in addition to using the information provided by Erudus.

We do not accept liability for any inaccuracies or incorrect information contained on this site. Please visit <http://www.erudus.com/terms-and-conditions> for full terms and conditions.