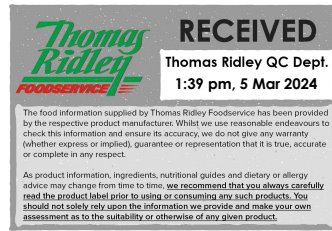


Changed Mar 05, 2024 11:30

Reviewed Mar 05, 2024 11:30

Erudus ID 996eb162208c4198bdde0a6cfdc96c55

Version 3.0



22127

# Jus-Rol Filo Pastry Sheets x8 500g

Filo Pastry 8x500g

## PRODUCT DESCRIPTION

Frozen uncooked filo pastry

Brand	PA Ross Ltd
Manufacturer Product Code	I000236
Product Type	Food
Product Category	Pastry
Storage Type	Frozen
Erudus ID	996eb162208c4198bdde0a6cfdc96c55
Specification Type	Generic

Outer Case GTIN 5010084109921



## INGREDIENTS

### Ingredient Declaration

WHEAT flour, water, corn starch, humectant (glycerol), salt, preservative (potassium sorbate), flour treatment agents (L-cysteine).

## ALLERGENS

Product Contains:

Celery/Celeriac	No	Mustard	No
Cereals Containing Gluten	Yes	Nuts (Tree)	No
Barley	No	Almond nuts	No
Oats	No	Brazil nuts	No
Rye	No	Cashew nuts	No
Wheat (including Spelt and Khorasan)	Yes	Hazelnuts	No
Crustacea	No	Macadamia (Queensland) nuts	No
Eggs	No	Pecan nuts	No
Fish	No	Pistachio nuts	No
Lupin	No	Walnuts	No
Milk	No	Peanuts	No
Molluscs	No	Sesame Seeds	No
		Soybeans	No
		Sulphur Dioxide and Sulphites	No

### Additional Allergen Information

For allergens, see ingredients in bold.

## SUPPLEMENTARY INGREDIENT INFORMATION

Palm Oil	No
Hydrogenated Vegetable Oil/Fat	No
GM Protein/DNA	No

ADDITIVES

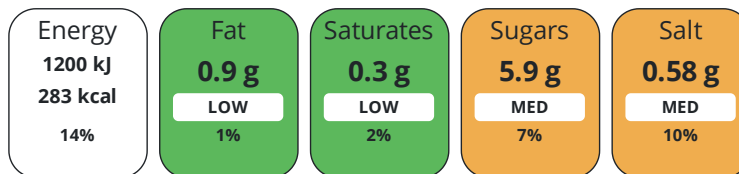
Product Contains:

<b>Artificial Antioxidants</b>	No	<b>Artificial Flavourings</b>	No
<b>Artificial Colours</b>	No	<b>Artificial Preservatives</b>	Yes
<b>Artificial Flavour Enhancers</b>	No	<b>Artificial Sweeteners</b>	No
<b>Vegan Diet</b>	Suitable for	<b>Vegetarian Diet</b>	Suitable for
<b>Halal Diet</b>	No	<b>Kosher Diet</b>	No

DIET  
SUITABILITY

NUTRITIONAL  
INFORMATION

Each 100g/ml portion contains:



of your reference intake.

Typical values per 100g/ml : Energy 283kcal / 1200kJ

Nutrient	per 100g	RI per 100g
<b>Energy (kJ)</b>	1200 kJ	14%
<b>Energy (kcal)</b>	283 kcal	14%
<b>Fat</b>	0.9 g	1%
<b>of which Saturates</b>	0.3 g	2%
<b>Carbohydrate</b>	58.9 g	23%
<b>of which Sugars</b>	5.9 g	7%
<b>Fibre</b>	2.2 g	
<b>Protein</b>	8.7 g	17%
<b>Salt</b>	0.58 g	10%

SUPPLEMENTARY  
NUTRITIONAL  
INFORMATION

HANDLING &  
STORAGE  
INFORMATION

**Directions For Use**

Directions 1. Defrost pastry in its wrapper for approximately 3 1/2-4 hours at room temperature or overnight in a refrigerator. 2. Allow pastry to come to room temperature before use. 3. Cook in a preheated oven at 200°C (180°C for fan assisted ovens)/400°F/ Gas Mark 6, or at the temperature required in your recipe. To avoid drying out use only a few sheets at a time. Keep rest of pack well wrapped until use.

**Storage Instructions**

KEEP FROZEN AT -18°C OR BELOW UNTIL REQUIRED FOR USE. DO NOT REFREEZE ONCE DEFROSTED. ONCE DEFROSTED USE WITHIN 24 HOURS.

<b>Shelf Life from Time of Production</b>	588 Days	<b>Exempt From Shelf Life Labelling</b>	No
---	----------	---	----

ACCREDITATIONS/  
CERTIFICATIONS/  
ASSURANCE  
SCHEMES



**Other Accreditation**

-

ORIGIN

<b>Product Country of Origin/Place of Provenance</b>	Greece
--	--------

PRODUCT CHARACTERISTICS CONFIGURATION

Standards Testing

Case Configuration

Inner Pack Configuration

**Total Quantity of Inner Components in Outer Case** 8 Units

**Outer Case**

**Is the Outer Case Splittable?** No

PRODUCT WEIGHTS

Inner Component

**Variable Weight Consumer Item** No

**Inner Component Weight** 500 g

Outer Case

**Outer Case Gross Weight** 4.23 kg

**Outer Case Net Weight** 4 kg

PRODUCT DIMENSIONS

Inner Component

**Inner Component Depth** 297 mm

**Inner Component Width** 75 mm

**Inner Component Height** 285 mm

Outer Case

**Outer Case Depth** 297 mm

**Outer Case Width** 285 mm

**Outer Case Height** 75 mm

PALLET INFORMATION

**Quantity of Cases Per Pallet Layer** 11 Cases

**Pallet Height** 1.6 MTR

**Quantity of Layers Per Pallet** 19 Layers

**Pallet Gross Weight** 909 kg

**Quantity of Cases Per Pallet** 209 Cases

PACKAGING

Inner Component Packaging

Type	Materials	Weight	Recycled Plastic %	Recyclable	Returnable	Composite
Film	Plastic	2.19 g	- %			
Film	Paper/Cardboard	33.7 g	- %			

Outer Case Packaging

Type	Materials	Weight	Recycled Plastic %	Recyclable	Returnable	Composite
Case	Paper/Cardboard	175 g	- %			

OTHER INFORMATION

**Manufacturer Comments**

n/a

CONTACT  
INFORMATION

Address

PA Ross Ltd  
Ruskin Chambers  
Drury Lane  
Knutsford  
Cheshire  
WA166HA  
United Kingdom

~~P. (Phone)~~ 01565 755500

Commercial Contact

Lucy Filby  
Sales Director  
lucy.filby@paross.co.uk

~~P. (Phone)~~ 07872 822708

The information on the [Erudus System](#) has been supplied by the manufacturers of the products and, whilst the owners of the Erudus System take steps to ensure the information is regularly updated, they give no warranty and no guarantee that the information is accurate. Product information and ingredients may change, please always read product labels carefully in addition to using the information provided by Erudus.

We do not accept liability for any inaccuracies or incorrect information contained on this site.  
Please visit <http://www.erudus.com/terms-and-conditions> for full terms and conditions.