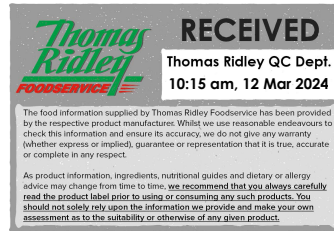


Changed Mar 11, 2024 23:44

Reviewed Mar 11, 2024 23:44

Erudus ID 6e501073b9714610928bccf196060909

Version 2.0



22170

Knorr Professional Tomato & Basil Concentrated Sauce 1.1L

Tomato & Basil Concentrated Sauce 2x1.2kg

PRODUCT DESCRIPTION

A concentrated tomato and basil sauce made to a classic recipe combining tomatoes, basil and a hint of garlic.

Brand	Unilever UK Limited
Manufacturer Product Code	64313503
Product Type	Food
Product Category	Sauces & Dips
Storage Type	Ambient
Erudus ID	6e501073b9714610928bccf196060909
Specification Type	Generic
Inner Component GTIN	8720182809667
Manufacturer Component Code	64313503
Outer Case GTIN	8720182809681



INGREDIENTS

Ingredient Declaration

Ingredients: Water, concentrated tomato puree (19%), crushed tomatoes (16%), modified starch, sugar, glucose syrup, dried onion, rapeseed oil, basil (0.7%), salt, garlic puree (0.5%), acid (citric acid).

ALLERGENS

Product Contains:

Celery/Celeriac	No	Mustard	May Contain
Cereals Containing Gluten	No	Nuts (Tree)	May Contain
Barley	No	Almond nuts	May Contain
Oats	No	Brazil nuts	May Contain
Rye	No	Cashew nuts	May Contain
Wheat (including Spelt and Khorasan)	No	Hazelnuts	May Contain
Crustacea	No	Macadamia (Queensland) nuts	May Contain
Eggs	No	Pecan nuts	May Contain
Fish	No	Pistachio nuts	May Contain
Lupin	No	Walnuts	May Contain
Milk	No	Peanuts	May Contain
Molluscs	No	Sesame Seeds	No
		Soybeans	No
		Sulphur Dioxide and Sulphites	No

Risk Source:

Mustard (Risk Source)	Line
Almond nuts (Risk Source)	Factory
Cashew nuts (Risk Source)	Factory
Macadamia nuts (Risk Source)	Factory
Pistachio nuts (Risk Source)	Factory
Peanuts (Risk Source)	Factory

Tree Nuts (Risk Source)	Factory
Brazil nuts (Risk Source)	Factory
Hazelnuts (Risk Source)	Factory
Pecan nuts (Risk Source)	Factory
Walnuts (Risk Source)	Factory

Allergen Statement On Pack

May contain peanuts, nuts and mustard.

FREE FROM CLAIMS

Gluten-Free	Yes
--------------------	-----

SUPPLEMENTARY INGREDIENT INFORMATION

Palm Oil	No
Hydrogenated Vegetable Oil/Fat	No
GM Protein/DNA	No

ADDITIVES

Product Contains:

Artificial Antioxidants	No
Artificial Colours	No
Artificial Flavour Enhancers	No

Artificial Flavourings	No
Artificial Preservatives	No
Artificial Sweeteners	No

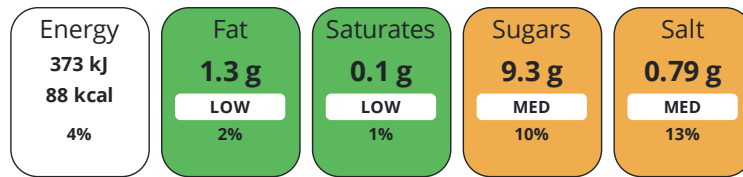
DIET SUITABILITY

Vegan Diet	Suitable for
Halal Diet	No

Vegetarian Diet	Suitable for
Kosher Diet	No

NUTRITIONAL INFORMATION

Each 100g/ml portion contains:



of your reference intake.

Typical values per 100g/ml : Energy 88kcal / 373kj

Nutrient	per 100ml	RI per 100ml	per 100ml serving	RI per 100ml serving	per 100ml of prepared product
Energy (kJ)	373 kJ	4%	373 kJ	4%	373 kJ
Energy (kcal)	88 kcal	4%	88 kcal	4%	88 kcal
Fat	1.3 g	2%	1.3 g	2%	1.3 g
of which Saturates	0.1 g	1%	0.1 g	1%	0.1 g
Carbohydrate	15.8 g	6%	15.8 g	6%	15.8 g
of which Sugars	9.3 g	10%	9.3 g	10%	9.3 g
Fibre	1.8 g		1.8 g		1.8 g
Protein	2 g	4%	2 g	4%	-
Salt	0.79 g	13%	0.8 g	13%	0.79 g

Serving Size	100 ml
Number of Servings	22 Servings

Source of Nutritional Information Manufacturers analysis

SUPPLEMENTARY NUTRITIONAL INFORMATION

Trans Fats per 100 g/ml	0 g
--------------------------------	-----

HFSS (HIGH IN FAT, SALT AND SUGAR)

HFSS Status No

HFSS Score 1

HANDLING & STORAGE INFORMATION

Directions For Use

Cook meat, fish or vegetables as desired then simply add one part concentrated sauce to one part of water, stir and simmer for 5 minutes. Alternatively use as desired or according to a ufs.com recipe suggestion. Suggested portion size 100ml (50ml sauce + 50ml water).

Storage Instructions

Store in a cool, dry place away from direct sunlight.

Storage Instructions After Opening

Once opened, keep refrigerated and use within 5 days, or freeze remaining contents immediately. Defrost in a refrigerator and use within 24 hours.

Shelf Life from Time of Production 360 Days

Exempt From Shelf Life Labelling No

Shelf Life From Opening 5 Days

ACCREDITATIONS/ CERTIFICATIONS/ ASSURANCE SCHEMES



Other Accreditation

-

ORIGIN

Product Country of Origin/Place of United Kingdom

Provenance

Additional Origin Details

SU - ABWF Foods (Leigh UK)

PRODUCT CHARACTERISTICS CONFIGURATION

Standards Testing

Case Configuration

Inner Pack Configuration

Variable Inner Components in Outer Case No

Count per Inner Component 1

Total Quantity of Inner Components in 2 Units

Outer Case

Is the Outer Case Splittable? Yes

PRODUCT WEIGHTS

Inner Component

Variable Weight Consumer Item No

Inner Component Weight 1.2 kg

Inner Component Volume 1.1 litre

e mark Yes

Outer Case

Outer Case Gross Weight 2.65 kg

Outer Case Net Weight 2.4 kg

PRODUCT DIMENSIONS

Inner Component

Inner Pack

Inner Component Depth 108 mm

Inner Pack Depth 108 mm

Inner Component Width 94 mm

Inner Pack Width 94 mm

Inner Component Height 174 mm

Inner Pack Height 173 mm

Outer Case

Outer Case Depth 223 mm

Outer Case Width 94 mm

Outer Case Height 181 mm

PALLET INFORMATION

Quantity of Cases Per Pallet Layer	55 Cases	Pallet Height	1.24 MTR
Quantity of Layers Per Pallet	6 Layers	Pallet Gross Weight	878.1 kg
Quantity of Cases Per Pallet	330 Cases		

PACKAGING

Inner Component Packaging

Type	Materials	Weight	Recycled Plastic %	Recyclable	Returnable	Composite
Bottle	Plastic / PP (Polypropylene)	69.3 g	- %	Yes	No	No

Outer Case Packaging

Type	Materials	Weight	Recycled Plastic %	Recyclable	Returnable	Composite
Case	Paper/Cardboard / Cardboard	73.68 g	- %	Yes	No	Yes

Transport Packaging

Type	Materials	Weight	Recycled Plastic %	Recyclable	Returnable	Composite
Other	Plastic / PET (Polyethylene Terethphalate)	0.74 g	- %	No	No	No
Other	Paper/Cardboard	4.69 g	- %			

MARKETING INFORMATION

Marketing Description

A gluten free, vegan Tomato & Basil ready to use concentrated sauce. It is 2024 PHE salt compliant.

OTHER INFORMATION

Value Added Tax Rate No VAT

Manufacturer Comments

n/a

CONTACT INFORMATION

Address

Unilever UK Limited
Lever House
3 St James Road
Kingston Upon Thames
KT1 2BA
England

P: (Phone) 020 8547 8989

Complaints Contact

via the Careline - details on pack

P: (Phone) 0800 783 3728

Technical Contact

Theresa Crayston
R&D Assistant Deploy Manager UFS
Theresa.Crayston@unilever.com

P: (Phone) 07825008860

Commercial Contact

Iwan Phillips
Route to Market, Away From Home
Iwan.Phillips@unilever.com

P: (Phone) +44 7795 645460

The information on the [Erudus System](#) has been supplied by the manufacturers of the products and, whilst the owners of the Erudus System take steps to ensure the information is regularly updated, they give no warranty and no guarantee that the information is accurate. Product information and ingredients may change, please always read product labels carefully in addition to using the information provided by Erudus.

We do not accept liability for any inaccuracies or incorrect information contained on this site. Please visit <http://www.erudus.com/terms-and-conditions> for full terms and conditions.