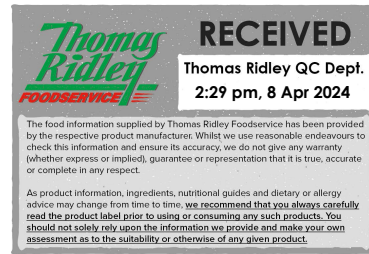


Changed Mar 14, 2024 11:27

Reviewed Mar 14, 2024 11:27

Erudus ID 4419006273ad4b84a3ca0628d5d8b75b

Version 2.0



SOPHIE'S ANGEL SPARKLE CAKE

Sophie's Angel Sparkle Cake 1x1.9kg

PRODUCT DESCRIPTION

A three-layer moist sponge cake comprising of marble layers sandwiched one with strawberry jam and other with sweet buttercream. Smothered in buttercream and finished with a sprinkling of colourful crunchy spheres. This gâteau is pre-portioned into 14 portions and packed 1 gâteau per outer.

Brand	CDT Sidoli (Welshpool) Ltd
Manufacturer Product Code	59115
Product Type	Food
Product Category	Desserts
Storage Type	Frozen
Erudus ID	4419006273ad4b84a3ca0628d5d8b75b
Specification Type	Bakery Products
Outer Case GTIN	5015091591158



INGREDIENTS

Ingredient Declaration

Sugar, **WHEAT** flour (with added calcium, iron, niacin, thiamin), **EGG**, rapeseed oil, sugar strands (sugar, glucose syrup, water, beetroot concentrate, glazing agent (shellac), colours (anthocyanin, curcumin)), butter (**MILK**), margarine (palm oil, rapeseed oil, water, emulsifier (mono- and diglycerides of fatty acids), natural flavouring), strawberry jam (4%) (glucose-fructose syrup, strawberries, sugar, gelling agent (pectins), colour (anthocyanin), acidity regulators (sodium citrates, citric acid), natural flavouring), humectant (glycerine), raising agents (diphosphates, sodium bicarbonate), modified maize starch, colours (curcumin, carmine), natural flavouring.

Ingredient Statements

Made in a factory that handles the following allergen: Nuts

ALLERGENS

Product Contains:

Celery/Celeriac	No	Mustard	No
Cereals Containing Gluten	Yes	Nuts (Tree)	May Contain
Barley	May Contain	Almond nuts	May Contain
Oats	May Contain	Brazil nuts	No
Rye	No	Cashew nuts	No
Wheat (including Spelt and Khorasan)	Yes	Hazelnuts	May Contain
Crustacea	No	Macadamia (Queensland) nuts	No
Eggs	Yes	Pecan nuts	May Contain
Fish	No	Pistachio nuts	May Contain
Lupin	No	Walnuts	May Contain
Milk	Yes	Peanuts	No
Molluscs	No	Sesame Seeds	No
		Soybeans	No
		Sulphur Dioxide and Sulphites	No

Risk Source:

Barley (Risk Source)	Factory	Oats (Risk Source)	Factory
Tree Nuts (Risk Source)	Factory	Almond nuts (Risk Source)	Factory
Hazelnuts (Risk Source)	Factory	Pecan nuts (Risk Source)	Factory
Pistachio nuts (Risk Source)	Factory	Walnuts (Risk Source)	Factory

Allergen Statement On Pack

Made in a factory that also handles the following allergen: Nuts

Additional Allergen Information

MADE IN A FACTORY THAT HANDLES THE FOLLOWING ALLERGEN: NUTS

SUPPLEMENTARY
INGREDIENT
INFORMATION

Palm Oil	Yes
Hydrogenated Vegetable Oil/Fat	No
GM Protein/DNA	No

ADDITIVES

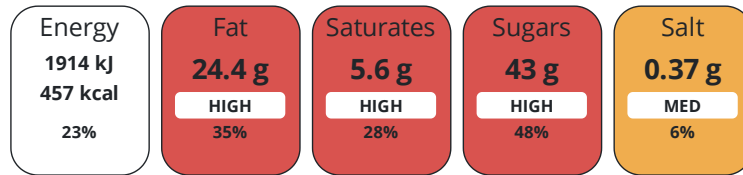
Product Contains:

Artificial Antioxidants	No	Artificial Flavourings	No
Artificial Colours	No	Artificial Preservatives	No
Artificial Flavour Enhancers	No	Artificial Sweeteners	No
Vegan Diet	No	Vegetarian Diet	No
Halal Diet	No	Kosher Diet	No

DIET
SUITABILITY

NUTRITIONAL
INFORMATION

Each 100g/ml portion contains:



of your reference intake.

Typical values per 100g/ml : Energy 457kcal / 1914kJ

Nutrient	per 100g	RI per 100g	per 135g serving	RI per 135g serving
Energy (kJ)	1914 kJ	23%	2583.9 kJ	31%
Energy (kcal)	457 kcal	23%	617 kcal	31%
Fat	24.4 g	35%	32.9 g	47%
of which Saturates	5.6 g	28%	7.6 g	38%
Carbohydrate	57 g	22%	77 g	30%
of which Sugars	43 g	48%	58.1 g	65%
Fibre	0.7 g		0.9 g	
Protein	3.4 g	7%	4.6 g	9%
Salt	0.37 g	6%	0.5 g	8%
Serving Size	135 g			
Number of Servings	14 Servings			

Source of Nutritional Information Calculation from known/accepted datasets

SUPPLEMENTARY
NUTRITIONAL
INFORMATION

HFSS (HIGH IN FAT, SALT AND SUGAR)

HFSS Status Yes

HFSS Score 17

HANDLING & STORAGE INFORMATION

Directions For Use

Handling Instructions Defrost prior to serving. Keep refrigerated once defrosted and for best results keep covered. Use within 72 hours of defrost. Do not re-freeze, once defrosted. Defrosting Instructions Whole: Remove all packaging, including the cake board, place on a serving platter, cover and defrost under refrigeration (8°C or below), for approximately 8 hours. Portion: Remove a portion from frozen, place on a plate, cover and defrost under refrigeration (8°C or below), for approximately 2 hours Usage Instructions 1. Keep refrigerated once defrosted and for best results keep covered. 2. Use within 72 hours of defrost. Do not re-freeze, once defrosted.

Storage Instructions

At or below minus 18°C (0°F)

Shelf Life from Time of Production 730 Days

Exempt From Shelf Life Labelling No

ACCREDITATIONS/ CERTIFICATIONS/ ASSURANCE SCHEMES ORIGIN

BRCGS Certified

Roundtable of Sustainable Palm Oil (RSPO)

Other Accreditation

Product Country of Origin/Place of United Kingdom

Provenance

Additional Origin Details

N/A

PRODUCT CHARACTERISTICS

Standards Testing

Do you undertake trend analysis of microbiological results? No

Is shelf life testing undertaken? No

CONFIGURATION

Case Configuration

Inner Pack Configuration

Total Quantity of Inner Components in 1 Units

Outer Case

Is the Outer Case Splittable? No

PRODUCT WEIGHTS

Inner Component

Variable Weight Consumer Item No

Inner Component Weight 1.9 kg

e mark No

Outer Case

Outer Case Gross Weight 2.35 kg

Outer Case Net Weight 1.9 kg

PRODUCT DIMENSIONS

Inner Component

Inner Component Depth 229 mm

Inner Component Width 229 mm

Inner Component Height 100 mm

Outer Case

Outer Case Depth 246 mm

Outer Case Width 246 mm

Outer Case Height 130 mm

PALLET INFORMATION

Quantity of Cases Per Pallet Layer 20 Cases

Pallet Height 1.46 MTR

Quantity of Layers Per Pallet 10 Layers

Pallet Gross Weight 498 kg

Quantity of Cases Per Pallet 200 Cases

PACKAGING

Inner Component Packaging

Type	Materials	Weight	Recycled Plastic %	Recyclable	Returnable	Composite
Cakeboard	Paper/Cardboard / Other	28.42 g	- %	No	No	No
Collar	Paper/Cardboard / Other	20.28 g	- %	Yes	No	No
Other	Other	2.3 g	- %	Yes	No	Yes

Outer Case Packaging

Type	Materials	Weight	Recycled Plastic %	Recyclable	Returnable	Composite
Case	Paper/Cardboard / Cardboard	136 g	- %	Yes	No	Yes

OTHER INFORMATION

Commodity Code 19059060

Manufacturer Comments

Revision: 14

CONTACT INFORMATION

Address

CDT Sidoli (Welshpool) Ltd
Henfaes Lane
Welshpool
Powys
SY21 7BE
Wales

P: (Phone) 01938 555234

Complaints Contact

Hera Gottschalk
Customers Service
customer_service@sidoli.co.uk

P: (Phone) 01935 555234

Technical Contact

Michele Fischetti
Technical Manager
mfischetti@sidoli.co.uk

P: (Phone) 01938 555234

Commercial Contact

Lorna Gries
Sales Manager
lgries@sidoli.co.uk

P: (Phone) 01938 555234

The information on the [Erudus System](#) has been supplied by the manufacturers of the products and, whilst the owners of the Erudus System take steps to ensure the information is regularly updated, they give no warranty and no guarantee that the information is accurate. Product information and ingredients may change, please always read product labels carefully in addition to using the information provided by Erudus.

We do not accept liability for any inaccuracies or incorrect information contained on this site.
Please visit <http://www.erudus.com/terms-and-conditions> for full terms and conditions.