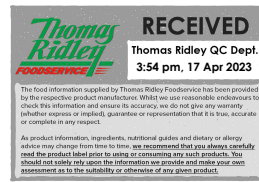


Supplier's Product Code :
Product Added :
Last Updated by Supplier :
erudus id :

RH Amar: MJ039 - GIV: 38506 (2x1kg)
12 January 2016
03 March 2023
20c2a685b0cb42afba798fdd8260c494



The information on the Erudus System has been supplied by the manufacturers of the products and, whilst the owners of the Erudus System take steps to ensure the information is regularly updated, they give no warranty and no guarantee that the information is accurate. Product information and ingredients may change, please always read product labels carefully in addition to using the information provided by Erudus One.

We do not accept liability for any inaccuracies or incorrect information contained on this site. Please visit <http://www.erudus.com/terms-and-conditions> for full terms and conditions.

Major Lamb Stock Base Powder 2 x 1kg

Short Product Name:
Lamb Stock Base Powder

Product Description:
Major Lamb Stock Base Powder (2x1kg) A very popular product which adds a delicious lamb flavour with notes of mint and rosemary. Great when used in a gravy, sauce or casserole to add a rich 'bottom of the roasting tin' flavour. (Yields up to 62.5 litres per 1kg pot, up to 125 litres per case). Gluten Free – No Declarable Allergens.

General Information

Food/Drink :	Food
Product Category :	Ambient
Generic Product Type :	Gravy / Bouillon

Supplier's Product Code :
RH Amar: MJ039 - GIV: 38506 (2x1kg)
Supplier: Givaudan UK Ltd
Chippenham Drive

Kingston
Milton Keynes
MK10 0AE
England
P: 01908282828

OUTER PRODUCT

Outer case Information

Outer Case GTIN :	5023212385067	Outer Case Length :	290 mm
Packaging Type Description :	Case	Outer Case Width :	145 mm
Total Quantity of Inner Units in Outer Case :	2 Units	Outer Case Height :	140 mm
Is Trade Item Splittable? :	No	Product Gross Weight :	2.16 kg
		Product Net Weight :	2.00 kg

Pallet Information

Quantity of Cases Per Pallet Layer :	27 Cases	Pallet Height :	1.40 MTR
Quantity of Layers Per Pallet :	9 Layers	Pallet Gross Weight :	549.00 kg
Quantity of Cases Per Pallet :	243 Cases		

Logistical Information

Shelf Life from Time of Production :	548 Days	Minimum Order Quantity :	1 Cases
Guaranteed Shelf Life on Delivery :	274 Days	Delivery Lead Time :	14 Days

Waste Packaging Weight - Outer Case

Glass :	0.00 g	Aluminium :	0.00 g
Plastic :	15.00 g	Steel :	0.00 g
Percentage Recycled Plastic :	Not specified.	Other :	0.00 g
Paper/Board :	0.00 g		

Waste Packaging Weight - Transport Packaging

Plastic :	1,000.00 g	Wood Total :	15,000.00 g
Paper/Board :	8,000.00 g	Is Pallet Returnable? :	No
Percentage Recycled Plastic :	Not specified.		

Other Information

Supplier Comments:
1kg makes up to 50 litres of stock once diluted.

INNER PRODUCT

Origin Information

Product Country of Origin/Place of Provenance :	Belgium
---	---------

Additional Origin Details :
Lamb Stock Base Powder is manufactured in Belgium.
Yeast Extract (Germany),
Dried Glucose Syrup (Belgium , France),
Salt (UK),
Flavouring (Germany, Egypt, France, Italy, India, Mexico, Netherlands, Tunisia, Belgium, China, Denmark, Romania, UK, USA, Malaysia, Philippines, S.Africa, Sudan),
Sugar (UK),
Lamb Powder (New Zealand),
Sunflower oil (France, Spain, Romania),
Yeast Extract (Netherlands),
Lactic acid Powder (Netherlands),
Natural flavouring (India),
Dried rosemary (Spain, Turkey, Morocco)

Inner Pack Information

Internal GTIN :	5023212605837
Packaging Type Description :	Plastic Tub
Variable Weight Consumer Item :	No
Net Drained Weight :	Not specified.

Inner Unit Length :	145 mm
Inner Unit Height :	138 mm
Inner Unit Width :	145 mm
Inner Product Weight :	Not specified.
Inner Product Weight Units :	g

Weight/Volume :
kg net

Handling Information

Directions For Use :
Use between 12g - 20g depending on taste. For best results dissolve 16g of stock powder, into 1 litre of boiling water (1 measuring scoop = 8g of powder). Stir or mix directly into sauce.

Storage Instructions :
Before opening, store in a cool dry place. Once opened reseal after use and keep in a cool dry place.

Dietary Information

Ingredients :

Yeast extract, salt, maize glucose syrup solids, flavouring, sugar, sunflower oil, lamb (2%), acidity regulators; lactic acid. Rosemary, black pepper extract.

Product contains:

GM Protein/DNA :	No
Celery/Celeriac (and products thereof) :	No
Lupin (and products thereof) :	No
Eggs (and products thereof) :	No
Fish (and products thereof) :	No
Soybeans (and products thereof) :	No
Milk (and products thereof) :	No
Mustard (and products thereof) :	No
Peanuts (and products thereof) :	No
Sesame Seeds (and products thereof) :	No
Crustacea (and products thereof) :	No
Molluscs (and products thereof) :	No
Nuts (and products thereof) :	No
Almond nuts :	No
Hazelnuts :	No
Walnuts :	No
Cashew nuts :	No
Pecan nuts :	No
Brazil nuts :	No
Pistachio nuts :	No
Macadamia nuts :	No
Queensland nuts :	No
Cereals Containing Gluten :	No
Wheat (and products thereof) :	No
Rye (and products thereof) :	No
Barley (and products thereof) :	No
Oats (and products thereof) :	No
Spelt (and products thereof) :	No
Kamut (and products thereof) :	No
Gluten content <20ppm :	Yes
Hydrogenated Vegetable Oil/Fat :	No
Palm Oil :	No
Sulphur Dioxide and Sulphites :	No
Sulphur Dioxide/Sulphites Concentration :	0

Product contains :

Artificial Antioxidants :	No
Artificial Colours :	No
Artificial Flavourings :	Yes
Artificial Flavour Enhancers :	No
Artificial Preservatives :	No
Artificial Sweeteners :	No

Product suitability:

Suitable for a Vegetarian Diet :	No
Suitable for a Vegan Diet :	No
Suitable for Sufferers of Lactose Intolerance :	Yes
Suitable for Coeliacs :	Yes
Approved for a Halal Diet :	No
Approved for a Kosher Diet :	No
HFSS (High in Fat, Salt and Sugar) :	-

Allergen Statement :

Not specified.

Nutritional Information

Average Serving :	Not specified.
Count per 100g :	Not specified.
Count Per Pack :	Not specified.
Energy per 100 G/ML :	1,200.00 kJ
Energy per 100 G/ML :	280.00 kcal
Fat per 100 G/ML :	3 g
- of which Saturates per 100 G/ML :	1 g
- of which Mono-unsaturates per 100 G/ML :	Not specified.
- of which Polyunsaturates per 100 G/ML :	Not specified.
Trans Fats per 100 G\ML :	Not specified.
Carbohydrate Per 100 G/ML :	17 g
- of which Sugars per 100 G/ML :	11 g
- of which Polyols per 100 G/ML :	Not specified.
- of which Starch per 100 G/ML :	Not specified.
Fibre per 100 G/ML :	Not specified.
Protein per 100 G/ML :	26 g
Salt per 100 G/ML :	28 g
Sodium per 100 G\ML :	Not specified.

Vitamin A per 100g :	Not specified.
Vitamin C per 100g :	Not specified.
Folate/Folic Acid per 100g :	Not specified.
Calcium per 100g :	Not specified.
Iron per 100g :	Not specified.
Zinc per 100g :	Not specified.
Cholesterol per 100 G/ML (UK/FR) :	Not specified.
Non Milk Extrinsic Sugars per 100gm :	Not specified.
Alcoholic Strength %Vol :	Not specified.
Fat Percentage in Dry Matter per 100g :	Not specified.

Waste Packaging Weight - Inner Unit

Glass :	0.00 g
Plastic :	132.00 g
Percentage Recycled Plastic :	Not specified.
Paper/Board :	0.00 g

Aluminium :	0.00 g
Steel :	0.00 g
Other :	0.00 g

Accreditations / Certifications / Assurance Schemes

BRCGS Certified Production :	Yes
Red Tractor :	No
Fairtrade :	No
Marine Stewardship Council Certified (MSC) :	No
Organic :	No
SALSA (Safe & Local Supplier Approval) :	No
British Lion Mark :	No
RSPCA Assured :	No
LEAF Marque (Linking Environment and Farming) :	No
Rainforest Alliance :	No
Food for Life Supplier Scheme :	Yes
Quality Meat Scotland :	No
Farm Assured Welsh Livestock :	No
Northern Ireland Beef & Lamb Farm Quality Assurance Scheme :	No
Quality Standard Mark (Beef/Lamb) :	No
Roundtable of Sustainable Palm Oil (RSPO) :	No
School Approved (The Requirement for School Food Regulation 2014) :	No
IFS Food Standard :	No
Best Aquaculture Practices (BAP) Certification :	No
ISO 14001 (Environmental System) :	No
FSSC 22000 :	No

Other Accreditation :	
Sedex	
Intra Stat/Taric Code :	2104 2000
Commodity Code :	Not specified.
Identification/Health Marks :	Not specified.

Standards Testing

Do you undertake trend analysis of microbiological results? : Yes

Is shelf life testing undertaken? : Yes

Microbiological Standards

Organism	Frequency	Target	Maximum	Sample (g or ml)	Note
Bacillus Cereus (cfu/g or ml)	Every Batch	<500	500	25g	
Clostridium Perfringens (cfu/g or ml)	Every Batch	<100	100	25g	
Coliforms (cfu/g or ml)	Every Batch	<100	100	100g	
E. Coli (cfu/g or ml)	Every Batch	<10	10	100g	
Enterobacteriaceae (cfu/g or ml)	Every Batch	<100	100	100g	
Listeria SPP	Every Batch	=0	0	25g	
Moulds (cfu/g or ml)	Every Batch	<500	500	100g	
Salmonella	Every Batch	=0	0	25g	
Staphylococcus Aureus (cfu/g or ml)	Every Batch	<100	100	100g	
Total Viable Count (TVC) (cfu/g or ml)	Every Batch	<10000	100000	100g	
Yeast (cfu/g or ml)	Every Batch	<500	500	100g	

Analytical Standards

Test	Frequency	Target	Range	Sample (g or ml)	Note
Moisture (%)	Every Batch	<5	0 to 5	100g	
Salt Content (%)	Every Batch	=26	24 to 28	100g	