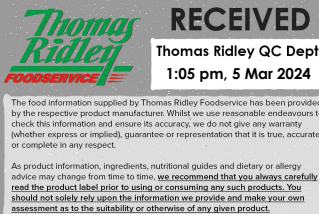


Changed Mar 05, 2024 11:23

Reviewed Mar 05, 2024 11:23

Erudus ID d0a9b689d246413a94d1ac19b4304143

Version 3.0



RECEIVED
Thomas Ridley QC Dept.
1:05 pm, 5 Mar 2024

The food information supplied by Thomas Ridley Foodservice has been provided by the respective product manufacturer. Whilst we use reasonable endeavours to check this information and ensure its accuracy, we do not give any warranty (whether express or implied), guarantee or representation that it is true, accurate or complete in any respect.

As product information, ingredients, nutritional guides and dietary or allergy advice may change from time to time, we recommend that you always carefully read the product label prior to using or consuming any such products. You should not solely rely upon the information we provide and make your own assessment as to the suitability or otherwise of any given product.



23127

Jus-Rol Puff Pastry Ovals 5.7kg

Puff Pastry 96x5.7kg

PRODUCT DESCRIPTION

Frozen uncooked puff pastry

Brand	PA Ross Ltd
Manufacturer Product Code	I000231
Product Type	Food
Product Category	Pastry
Storage Type	Frozen
Erudus ID	d0a9b689d246413a94d1ac19b4304143
Specification Type	Generic



Outer Case GTIN

5010084109020



INGREDIENTS

Ingredient Declaration

WHEAT flour, water, vegetable oils and fats (palm, rape), salt, emulsifier (mono- and diglycerides of fatty acids), flour treatment agents (ascorbic acid, L-cysteine).

ALLERGENS

Product Contains:

Celery/Celery	No	Mustard	No
Cereals Containing Gluten	Yes	Nuts (Tree)	No
Barley	No	Almond nuts	No
Oats	No	Brazil nuts	No
Rye	No	Cashew nuts	No
Wheat (including Spelt and Khorasan)	Yes	Hazelnuts	No
Crustacea	No	Macadamia (Queensland) nuts	No
Eggs	No	Pecan nuts	No
Fish	No	Pistachio nuts	No
Lupin	No	Walnuts	No
Milk	No	Peanuts	No
Molluscs	No	Sesame Seeds	No
		Soybeans	No
		Sulphur Dioxide and Sulphites	No

Additional Allergen Information

For allergens see ingredients in bold.

SUPPLEMENTARY
INGREDIENT
INFORMATION

Palm Oil	Yes
Hydrogenated Vegetable Oil/Fat	No
GM Protein/DNA	No

ADDITIVES

Product Contains:

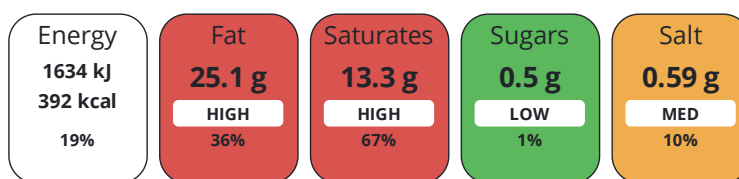
Artificial Antioxidants	No	Artificial Flavourings	No
Artificial Colours	No	Artificial Preservatives	No
Artificial Flavour Enhancers	No	Artificial Sweeteners	No

DIET
SUITABILITY

Vegan Diet	No	Vegetarian Diet	Suitable for
Halal Diet	No	Kosher Diet	No

NUTRITIONAL
INFORMATION

Each 100g/ml portion contains:



of your reference intake.

Typical values per 100g/ml : Energy 392kcal / 1634kJ

Nutrient	per 100g	RI per 100g	per 100g serving	RI per 100g serving
Energy (kJ)	1634 kJ	19%	1634 kJ	19%
Energy (kcal)	392 kcal	20%	392 kcal	20%
Fat	25.1 g	36%	25.1 g	36%
of which Saturates	13.3 g	67%	13.3 g	67%
Carbohydrate	36 g	14%	36 g	14%
of which Sugars	< 0.5 g	1%	0.5 g	1%
Fibre	1.1 g		1.1 g	
Protein	5 g	10%	5 g	10%
Salt	0.59 g	10%	0.6 g	10%
Serving Size	100 g			

SUPPLEMENTARY
NUTRITIONAL
INFORMATION

HANDLING &
STORAGE
INFORMATION

Directions For Use

Directions: 1. Remove required number of ovals from the case. 2. Defrost for 8-10 minutes and use as you would freshly made pastry. 3. Alternatively bake from frozen at 220°C (425°F) or at the temperature required in your recipe.

Storage Instructions

STORE AT -18°C (0°F). KEEP FROZEN UNTIL REQUIRED FOR USE. DO NOT REFREEZE ONCE DEFROSTED. DO NOT REFREEZE ONCE DEFROSTED.

Shelf Life from Time of Production	744 Days	Exempt From Shelf Life Labelling	No
---	----------	---	----

	Other Accreditation							
	IFS							
ORIGIN	Product Country of Origin/Place of		Greece					
	Provenance							
PRODUCT CHARACTERISTICS CONFIGURATION	Standards Testing							
	Case Configuration			Inner Pack Configuration				
	Total Quantity of Inner Components in		96 Units					
	Outer Case							
	Is the Outer Case Splittable?		No					
PRODUCT WEIGHTS	Inner Component							
	Variable Weight Consumer Item		No					
	Inner Component Weight		5.7 kg					
	Outer Case							
	Outer Case Gross Weight		6.4 kg					
	Outer Case Net Weight		5.7 kg					
PRODUCT DIMENSIONS	Inner Component							
	Inner Component Depth		318 mm					
	Inner Component Width		88 mm					
	Inner Component Height		318 mm					
	Outer Case							
	Outer Case Depth		318 mm					
	Outer Case Width		318 mm					
	Outer Case Height		88 mm					
	PALLET INFORMATION	Quantity of Cases Per Pallet Layer		9 Cases		Pallet Height		1.7 MTR
		Quantity of Layers Per Pallet		16 Layers		Pallet Gross Weight		952 kg
Quantity of Cases Per Pallet		144 Cases						
Inner Component Packaging								
PACKAGING	Type	Materials	Weight	Recycled Plastic %	Recyclable	Returnable	Composite	
	Box	Paper/Cardboard	2.5 g	- %				
	Outer Case Packaging							
	Type	Materials	Weight	Recycled Plastic %	Recyclable	Returnable	Composite	
	Case	Paper/Cardboard	114 g	- %				
	OTHER INFORMATION	Manufacturer Comments						
		n/a						

CONTACT
INFORMATION

Address

PA Ross Ltd
Ruskin Chambers
Drury Lane
Knutsford
Cheshire
WA166HA
United Kingdom

~~P. (Phone)~~ 01565 755500

Commercial Contact

Lucy Filby
Sales Director
lucy.filby@paross.co.uk

~~P. (Phone)~~ 07872 822708

The information on the [Erudus System](#) has been supplied by the manufacturers of the products and, whilst the owners of the Erudus System take steps to ensure the information is regularly updated, they give no warranty and no guarantee that the information is accurate. Product information and ingredients may change, please always read product labels carefully in addition to using the information provided by Erudus.

We do not accept liability for any inaccuracies or incorrect information contained on this site.
Please visit <http://www.erudus.com/terms-and-conditions> for full terms and conditions.