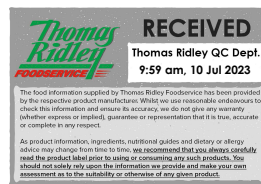


Supplier's Product Code :  
Product Added :  
Last Updated by Supplier :  
erudus id :

12405012  
06 January 2022  
06 January 2022  
9f1910c6a6054fd7aa4a0aa88df37066



The information on the Erudus System has been supplied by the manufacturers of the products and, whilst the owners of the Erudus System take steps to ensure the information is regularly updated, they give no warranty and no guarantee that the information is accurate. Product information and ingredients may change, please always read product labels carefully in addition to using the information provided by Erudus One.

We do not accept liability for any inaccuracies or incorrect information contained on this site. Please visit <http://www.erudus.com/terms-and-conditions> for full terms and conditions.

## NESCAFE GOLD Cappuccino Unsweetened Taste 50 sachets 710g

Short Product Name:

NESCAFE GOLD Cappuccino Unsweetened sachets

Product Description:

Instant coffee beverage. Unsweetened taste.

### General Information

Food/Drink :	Drink
Product Category :	Ambient
Generic Product Type :	Drinks - Dry (Tea, Coffee, etc)

Supplier's Product Code :

12405012

Supplier: Nestle UK

1 City Place,

Gatwick

RH6 0PA

England

P: 0800 00 00 30

### OUTER PRODUCT

#### Outer case Information

Outer Case GTIN :	07613034651563
Packaging Type Description :	Case
Total Quantity of Inner Units in Outer Case :	50 Units
Is Trade Item Splittable? :	No

Outer Case Length :	190 mm
Outer Case Width :	250 mm
Outer Case Height :	110 mm
Product Gross Weight :	0.71 kg
Product Net Weight :	0.96 kg

#### Pallet Information

Quantity of Cases Per Pallet Layer :	24 Cases
Quantity of Layers Per Pallet :	10 Layers
Quantity of Cases Per Pallet :	240 Cases

Pallet Height :	1.30 MTR
Pallet Gross Weight :	263.00 kg

#### Logistical Information

Shelf Life from Time of Production :	365 Days
Guaranteed Shelf Life on Delivery :	Not specified.

Minimum Order Quantity :	1 Cases
Delivery Lead Time :	Not specified.

#### Waste Packaging Weight - Outer Case

Glass :	0.00 g
Plastic :	0.00 g
Percentage Recycled Plastic :	Not specified.
Paper/Board :	0.00 g

Aluminium :	0.00 g
Steel :	0.00 g
Other :	0.00 g

#### Waste Packaging Weight - Transport Packaging

Plastic :	Not specified.
Paper/Board :	Not specified.
Percentage Recycled Plastic :	Not specified.

Wood Total :	Not specified.
Is Pallet Returnable? :	-

#### Other Information

Supplier Comments:

This product only has primary packaging

## INNER PRODUCT

### Origin Information

Product Country of Origin/Place of Provenance : United Kingdom

**Additional Origin Details :**  
Not specified.

### Inner Pack Information

Internal GTIN : 7613034651563

Packaging Type Description : Box

Variable Weight Consumer Item : No

Net Drained Weight : Not specified.

Inner Unit Length : 190 mm

Inner Unit Height : 110 mm

Inner Unit Width : 250 mm

Inner Product Weight : Not specified.

Inner Product Weight Units : g

**Weight/Volume :**  
710g net weight

### Handling Information

**Directions For Use :**

Empty the contents of the sachet into your favourite mug.  
Pour in 200ml of hot (not boiling) water and stir thoroughly.  
Perfection takes time, wait 20 seconds and stir again.  
For creamier texture gently tap your mug on the table. Now enjoy!

**Storage Instructions :**

Store in a cool, dry place

## Dietary Information

### Ingredients :

Skimmed MILK Powder (31%), Glucose Syrup, Coffee (16%) [Instant Coffee (15.5%), Roast and Ground Coffee], Coconut Oil, **LACTOSE**, Acidity Regulators (Sodium Bicarbonate, Citric Acid), Salt, Natural Flavourings.

### Product contains:

GM Protein/DNA :	No
Celery/Celeriac (and products thereof) :	No
Lupin (and products thereof) :	No
Eggs (and products thereof) :	No
Fish (and products thereof) :	No
Soybeans (and products thereof) :	No
Milk (and products thereof) :	Yes
Mustard (and products thereof) :	No
Peanuts (and products thereof) :	No
Sesame Seeds (and products thereof) :	No
Crustacea (and products thereof) :	No
Molluscs (and products thereof) :	No
Nuts (and products thereof) :	No
Almond nuts :	No
Hazelnuts :	No
Walnuts :	No
Cashew nuts :	No
Pecan nuts :	No
Brazil nuts :	No
Pistachio nuts :	No
Macadamia nuts :	No
Queensland nuts :	No
Cereals Containing Gluten :	No
Wheat (and products thereof) :	No
Rye (and products thereof) :	No
Barley (and products thereof) :	No
Oats (and products thereof) :	No
Spelt (and products thereof) :	No
Kamut (and products thereof) :	No
Gluten content <20ppm :	Yes
Hydrogenated Vegetable Oil/Fat :	No
Palm Oil :	No
Sulphur Dioxide and Sulphites :	No
Sulphur Dioxide/Sulphites Concentration :	0

### Product contains :

Artificial Antioxidants :	-
Artificial Colours :	-
Artificial Flavourings :	No
Artificial Flavour Enhancers :	-
Artificial Preservatives :	-
Artificial Sweeteners :	-

### Product suitability:

Suitable for a Vegetarian Diet :	Yes
Suitable for a Vegan Diet :	No
Suitable for Sufferers of Lactose Intolerance :	No
Suitable for Coeliacs :	Yes
Approved for a Halal Diet :	No
Approved for a Kosher Diet :	No
HFSS (High in Fat, Salt and Sugar) :	-

### Allergen Statement :

Contains MILK and LACTOSE

## Nutritional Information

Average Serving :	Not specified.
Count per 100g :	Not specified.
Count Per Pack :	Not specified.
Energy per 100 G/ML :	1,634.00 kJ
Energy per 100 G/ML :	389.00 kcal
Fat per 100 G/ML :	13.9 g
- of which Saturates per 100 G/ML :	11.8 g
- of which Mono-unsaturates per 100 G/ML :	Not specified.
- of which Polyunsaturates per 100 G/ML :	Not specified.
Trans Fats per 100 G\ML :	Not specified.
Carbohydrate Per 100 G/ML :	49 g
- of which Sugars per 100 G/ML :	27.2 g
- of which Polyols per 100 G/ML :	Not specified.
- of which Starch per 100 G/ML :	Not specified.
Fibre per 100 G/ML :	5.8 g
Protein per 100 G/ML :	13.2 g
Salt per 100 G/ML :	1.72 g
Sodium per 100 G\ML :	Not specified.

Vitamin A per 100g :	Not specified.
Vitamin C per 100g :	Not specified.
Folate/Folic Acid per 100g :	Not specified.
Calcium per 100g :	Not specified.
Iron per 100g :	Not specified.
Zinc per 100g :	Not specified.
Cholesterol per 100 G/ML (UK/FR) :	Not specified.
Non Milk Extrinsic Sugars per 100gm :	Not specified.
Alcoholic Strength %Vol :	Not specified.
Fat Percentage in Dry Matter per 100g :	Not specified.

## Waste Packaging Weight - Inner Unit

Glass :	0.00 g
Plastic :	1.75 g
Percentage Recycled Plastic :	Not specified.
Paper/Board :	170.00 g

Aluminium :	0.00 g
Steel :	0.00 g
Other :	0.00 g

## Accreditations / Certifications / Assurance Schemes

BRCGS Certified Production :	No
Red Tractor :	No
Fairtrade :	No
Marine Stewardship Council Certified (MSC) :	No
Organic :	No
SALSA (Safe & Local Supplier Approval) :	No
British Lion Mark :	No
RSPCA Assured :	No
LEAF Marque (Linking Environment and Farming) :	No
Rainforest Alliance :	No
Food for Life Supplier Scheme :	No
Quality Meat Scotland :	No
Farm Assured Welsh Livestock :	No
Northern Ireland Beef & Lamb Farm Quality Assurance Scheme :	No
Quality Standard Mark (Beef/Lamb) :	No
Roundtable of Sustainable Palm Oil (RSPO) :	No
School Approved (The Requirement for School Food Regulation 2014) :	No
IFS Food Standard :	No
Best Aquaculture Practices (BAP) Certification :	No
ISO 14001 (Environmental System) :	No
FSSC 22000 :	Yes

<b>Other Accreditation :</b>	Not specified.
Intra Stat/Taric Code :	Not specified.
Commodity Code :	Not specified.
Identification/Health Marks :	Not specified.

## Standards Testing

Do you undertake trend analysis of microbiological results? : No

Is shelf life testing undertaken? : No

## Microbiological Standards

Not available.

## Analytical Standards

Not available.