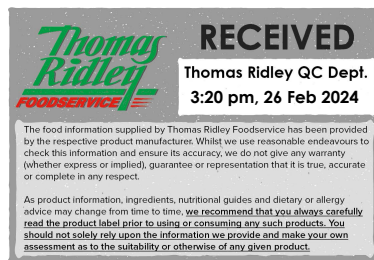


Changed Feb 26, 2024 14:25

Reviewed Feb 26, 2024 14:25

Erudus ID 27de3fb919b64372bbcaf33f4013ab00

Version 2.0



Marmite Yeast Extract 600g Tub

Marmite Yeast Extract 6x600g

PRODUCT DESCRIPTION

Yeast Extract Spread fortified with B vitamins

Brand	Unilever UK Limited
Manufacturer Product Code	32679
Product Type	Food
Product Category	Preserves and Spreads
Storage Type	Ambient
Erudus ID	27de3fb919b64372bbcaf33f4013ab00
Specification Type	Generic



Inner Component GTIN	5000184631590
Outer Case GTIN	5014598047199



INGREDIENTS

Ingredient Declaration

Yeast extract (contains BARLEY, WHEAT, OATS, RYE), salt, vegetable juice concentrate, vitamins (thiamin, riboflavin, niacin, vitamin B12 and folic acid), natural flavouring (contains CELERY).

ALLERGENS

Product Contains:

Celery/Celериac	Yes	Mustard	No
Cereals Containing Gluten	Yes	Nuts (Tree)	No
Barley	Yes	Almond nuts	No
Oats	Yes	Brazil nuts	No
Rye	Yes	Cashew nuts	No
Wheat (including Spelt and Khorasan)	Yes	Hazelnuts	No
Crustacea	No	Macadamia (Queensland) nuts	No
Eggs	No	Pecan nuts	No
Fish	No	Pistachio nuts	No
Lupin	No	Walnuts	No
Milk	No	Peanuts	No
Molluscs	No	Sesame Seeds	No
		Soybeans	No
		Sulphur Dioxide and Sulphites	No

Additional Allergen Information

-

SUPPLEMENTARY
INGREDIENT
INFORMATION

Palm Oil	No
Hydrogenated Vegetable Oil/Fat	No
GM Protein/DNA	No

ADDITIVES

Product Contains:

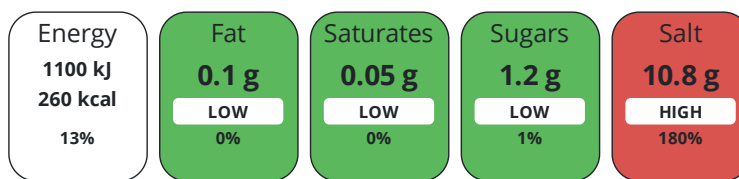
Artificial Antioxidants	No	Artificial Flavourings	No
Artificial Colours	No	Artificial Preservatives	No
Artificial Flavour Enhancers	No	Artificial Sweeteners	No

DIET
SUITABILITY

Vegan Diet	Suitable for	Vegetarian Diet	Suitable for
Halal Diet	Suitable for	Kosher Diet	Suitable for

NUTRITIONAL
INFORMATION

Each 100g/ml portion contains:



of your reference intake.

Typical values per 100g/ml : Energy 260kcal / 1100kj

Nutrient	per 100g	RI per 100g	per 8g serving	RI per 8g serving
Energy (kJ)	1100 kJ	13%	88 kJ	1%
Energy (kcal)	260 kcal	13%	20.8 kcal	1%
Fat	0.1 g	0%	-	-
of which Saturates	0.05 g	0%	-	-
Carbohydrate	30 g	12%	2.4 g	1%
of which Sugars	1.2 g	1%	0.1 g	0%
Fibre	1.1 g		0.1 g	
Protein	34 g	68%	2.7 g	5%
Salt	10.8 g	180%	0.9 g	15%
Serving Size	8 g			

VITAMINS AND
MINERALS

Nutrient	per 100g	RI per 100g	per 8g serving	RI per 8g serving
Folate/Folic Acid	1250 µg	625%	100 µg	50%

SUPPLEMENTARY
NUTRITIONAL
INFORMATION

HANDLING &
STORAGE
INFORMATION

Directions For Use

Ready to use: Spread thinly on toast. For Cooking: To make a clear stock, use 30g Marmite Yeast Extract per litre of hot water.

Storage Instructions

Store in a cool, dark place.

Shelf Life from Time of Production	540 Days	Exempt From Shelf Life Labelling	No
---	----------	---	----

	Other Accreditation						
	n/a						
ORIGIN	Product Country of Origin/Place of		United Kingdom				
	Provenance						
	Additional Origin Details						
	Manufactured in Burton Packed in March Foods UK						
PRODUCT CHARACTERISTICS CONFIGURATION	Standards Testing						
	Case Configuration			Inner Pack Configuration			
	Total Quantity of Inner Components in		6 Units				
	Outer Case						
	Is the Outer Case Splittable?		Yes				
PRODUCT WEIGHTS	Inner Component						
	Variable Weight Consumer Item		No				
	Inner Component Weight		600 g				
	Outer Case						
	Outer Case Gross Weight		4.04 kg				
	Outer Case Net Weight		3.6 kg				
PRODUCT DIMENSIONS	Inner Component						
	Inner Component Depth		114 mm				
	Inner Component Width		114 mm				
	Inner Component Height		78 mm				
	Outer Case						
	Outer Case Depth		360 mm				
	Outer Case Width		230 mm				
	Outer Case Height		85 mm				
PALLET INFORMATION	Quantity of Cases Per Pallet Layer		13 Cases		Pallet Height		1.1 MTR
	Quantity of Layers Per Pallet		11 Layers		Pallet Gross Weight		605.15 kg
	Quantity of Cases Per Pallet		143 Cases				
PACKAGING	Inner Component Packaging						
	Type	Materials	Weight	Recycled Plastic %	Recyclable	Returnable	Composite
	Tub	Plastic	30 g	- %			
	Outer Case Packaging						
	Type	Materials	Weight	Recycled Plastic %	Recyclable	Returnable	Composite
	Case	Plastic	25.7 g	- %			
	Case	Paper/Cardboard	0.7 g	- %			
	Transport Packaging						
	Type	Materials	Weight	Recycled Plastic %	Recyclable	Returnable	Composite
	Other	Plastic	3.38 g	- %			

MARKETING
INFORMATION

Marketing Description

Yeast Extract Spread fortified with B vitamins. Marmite Yeast Extract Spread is a unique & delicious breakfast idea made in the UK in Burton. Our yeast extract spreads easily on toast, providing a quick & simple breakfast solution. Spread Marmite on toast, crumpets, bagels and a host of other foods. You can even try it with eggs, avocados or cheese for an extra burst of flavour. Marmite is rich in B vitamins, has no added sugar and suitable for vegans.

OTHER
INFORMATION

Manufacturer Comments

n/a

CONTACT
INFORMATION

Address

Unilever UK Limited
Lever House
3 St James Road
Kingston Upon Thames
KT1 2BA
England

P: (Phone) 020 8547 8989

Complaints Contact

via the Careline - details on pack

P: (Phone) 0800 783 3728

Technical Contact

Theresa Crayston
R&D Assistant Deploy Manager UFS
Theresa.Crayston@unilever.com

P: (Phone) 07825008860

Commercial Contact

Iwan Phillips
Route to Market, Away From Home
Iwan.Phillips@unilever.com

P: (Phone) +44 7795 645460

The information on the [Erudus System](#) has been supplied by the manufacturers of the products and, whilst the owners of the Erudus System take steps to ensure the information is regularly updated, they give no warranty and no guarantee that the information is accurate. Product information and ingredients may change, please always read product labels carefully in addition to using the information provided by Erudus.

We do not accept liability for any inaccuracies or incorrect information contained on this site.
Please visit <http://www.erudus.com/terms-and-conditions> for full terms and conditions.