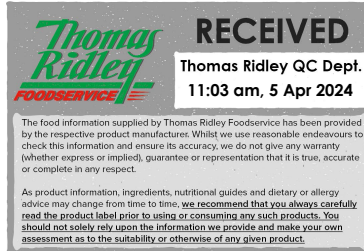


Changed Apr 03, 2024 09:31

Reviewed Apr 03, 2024 09:31

Erudus ID 3c5279fed53d451286b255b062afb16f

Version 2.0



Thomas Ridley
FOODSERVICE

RECEIVED
Thomas Ridley QC Dept.
11:03 am, 5 Apr 2024

The food information supplied by Thomas Ridley Foodservice has been provided by the respective product manufacturers. Whilst we use reasonable endeavours to check this information and ensure its accuracy, we do not give any warranty (whether express or implied), guarantee or representation that it is true, accurate or complete in any respect.

As product information, ingredients, nutritional guides and dietary or allergy advice may change from time to time, we recommend that you always carefully read the product label prior to using or consuming any such products. You should not solely rely upon the information we provide and make your own assessment as to the suitability or otherwise of any given product.



24033

Turkey Stock Mix 800g

Turkey Stock Mix 2x800g

PRODUCT DESCRIPTION

A composite material produced by the dry blending of food ingredients. A fine, light yellow-cream coloured free-flowing powder, with a distinctive odour of turkey. It has the characteristic appearance and flavour of Turkey Stock when reconstituted with water.

Brand	Essential Cuisine Limited
Manufacturer Product Code	SW00122 - ECTS/3
Manufacturer Version Number	1
Effective Date	Aug 2, 2023
Product Type	Food
Product Category	Gravy / Bouillon
Storage Type	Ambient
Erudus ID	3c5279fed53d451286b255b062afb16f
Specification Type	Generic
Inner Component GTIN	5029540000511
Outer Case GTIN	05029540000719



INGREDIENTS

Ingredient Declaration

Ingredients when reconstituted:

Turkey Stock (Water, Turkey), Flavourings, Glucose Syrup, Salt, Yeast Extract, Rapeseed Oil, Chicken Fat, Herb Extracts.

ALLERGENS

Product Contains:

Celery/Celeriac	No	Mustard	No
Cereals Containing Gluten	No	Nuts (Tree)	No
Barley	No	Almond nuts	No
Oats	No	Brazil nuts	No
Rye	No	Cashew nuts	No
Wheat (including Spelt and Khorasan)	No	Hazelnuts	No
Crustacea	No	Macadamia (Queensland) nuts	No
Eggs	No	Pecan nuts	No
Fish	No	Pistachio nuts	No
Lupin	No	Walnuts	No
Milk	No	Peanuts	No
Molluscs	No	Sesame Seeds	No
		Soybeans	No
		Sulphur Dioxide and Sulphites	No

FREE FROM CLAIMS

Gluten-Free	Yes
--------------------	-----

SUPPLEMENTARY
INGREDIENT
INFORMATION

Palm Oil	No
Hydrogenated Vegetable Oil/Fat	No
GM Protein/DNA	No

ADDITIVES

Product Contains:

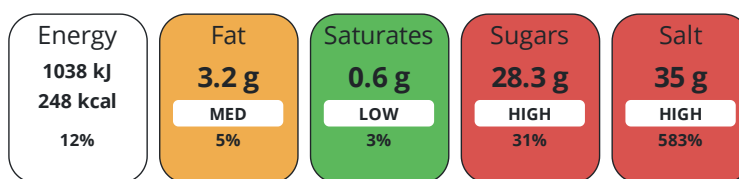
Artificial Antioxidants	No	Artificial Flavourings	Yes
Artificial Colours	No	Artificial Preservatives	No
Artificial Flavour Enhancers	No	Artificial Sweeteners	No

DIET
SUITABILITY

Vegan Diet	No	Vegetarian Diet	No
Halal Diet	No	Kosher Diet	No

NUTRITIONAL
INFORMATION

Each 100g/ml portion contains:



of your reference intake.

Typical values per 100g/ml : Energy 248kcal / 1038kJ

Nutrient	per 100g	RI per 100g
Energy (kJ)	1038 kJ	12%
Energy (kcal)	248 kcal	12%
Fat	3.2 g	5%
of which Saturates	0.6 g	3%
Carbohydrate	33.6 g	13%
of which Sugars	28.3 g	31%
Fibre	0.1 g	
Protein	21.1 g	42%
Salt	35 g	583%

SUPPLEMENTARY
NUTRITIONAL
INFORMATION

HANDLING &
STORAGE
INFORMATION

Directions For Use

To make stock, simply add the required amount of stock mix (12 - 20g) into 1 litre (1.75 pints) of boiling water and stir until dissolved.

Storage Instructions

Always reseal after use and keep in a cool, dry place.

Shelf Life from Time of Production	547 Days	Exempt From Shelf Life Labelling	No
---	----------	---	----

ACCREDITATIONS/
CERTIFICATIONS/
ASSURANCE
SCHEMES
ORIGIN

BRCGS Certified	Food for Life Supplier Scheme
Other Accreditation	

Product Country of Origin/Place of United Kingdom

Provenance

Additional Origin Details

Manufactured in the UK using materials sourced from EU and non EU countries.

PRODUCT
CHARACTERISTICS

Standards Testing

CONFIGURATION	Case Configuration		Inner Pack Configuration					
	Total Quantity of Inner Components in Outer Case	2 Units						
	Is the Outer Case Splittable?	Yes						
PRODUCT WEIGHTS	Inner Component							
	Variable Weight Consumer Item	No						
	Inner Component Weight	800 g						
	Outer Case							
	Outer Case Gross Weight	1.8 kg						
	Outer Case Net Weight	1.6 kg						
PRODUCT DIMENSIONS	Inner Component							
	Inner Component Depth	132 mm						
	Inner Component Width	132 mm						
	Inner Component Height	132 mm						
	Outer Case							
	Outer Case Depth	265 mm						
	Outer Case Width	132 mm						
	Outer Case Height	135 mm						
	PALLET INFORMATION	Quantity of Cases Per Pallet Layer	35 Cases	Pallet Height	1.3 MTR			
		Quantity of Layers Per Pallet	8 Layers	Pallet Gross Weight	504.34 kg			
Quantity of Cases Per Pallet		280 Cases						
PACKAGING	Inner Component Packaging							
	Type	Materials	Weight	Recycled Plastic %	Recyclable	Returnable	Composite	
	Tub	Plastic	68 g	- %				
	Outer Case Packaging							
	Type	Materials	Weight	Recycled Plastic %	Recyclable	Returnable	Composite	
	Paper/Polyethylene	Plastic	10 g	- %				
	Paper/Polyethylene	Paper/Cardboard	1 g	- %				
	Transport Packaging							
	Type	Materials	Weight	Recycled Plastic %	Recyclable	Returnable	Composite	
	Other	Plastic	500 g	- %				
	Other	Paper/Cardboard	5000 g	- %				
	Other	Wood	30000 g	- %				
	MARKETING INFORMATION	Marketing Description						
		This Turkey Stock has been created to give you the taste and flavour of a traditional stock. Made with the finest ingredients, and produces the perfect stock every time. It's convenient and versatile when made up with boiling water use just as you would a freshly made stock.						
	OTHER INFORMATION	Intrastat/Taric Code	2103					
		Manufacturer Comments						
N/A								

CONTACT
INFORMATION

Address

Essential Cuisine Limited
Essential Cuisine Ltd
Browning Way
Winsford
Cheshire
CW7 2RH
United Kingdom

P. (Phone) 01606 541490

The information on the [Erudus System](#) has been supplied by the manufacturers of the products and, whilst the owners of the Erudus System take steps to ensure the information is regularly updated, they give no warranty and no guarantee that the information is accurate. Product information and ingredients may change, please always read product labels carefully in addition to using the information provided by Erudus.

We do not accept liability for any inaccuracies or incorrect information contained on this site.
Please visit <http://www.erudus.com/terms-and-conditions> for full terms and conditions.