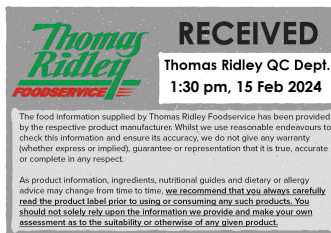


Changed Feb 14, 2024 14:58

Reviewed Feb 14, 2024 14:58

Erudus ID 09700423e97644ec9a175e026ff6eae

Version 2.0



**Thomas Ridley**  
FOODSERVICE

**RECEIVED**  
Thomas Ridley QC Dept.  
1:30 pm, 15 Feb 2024

The food information supplied by Thomas Ridley Foodservice has been provided by the respective product manufacturer. Whilst we use reasonable endeavours to check this information and ensure its accuracy, we do not give any warranty (whether express or implied), guarantee or representation that it is true, accurate or complete in any respect.

As product information, ingredients, nutritional guides and dietary or allergy advice may change from time to time, we recommend that you always carefully read the product label prior to using or consuming any such products. You should not solely rely upon the information we provide and make your own assessment as to the suitability or otherwise of any given product.



# Heinz Beans in Tomato Sauce (24) 415g

Beans In Tomato Sauce 24x415g

## PRODUCT DESCRIPTION

Baked beans in a rich tomato sauce.

|                           |                                 |
|---------------------------|---------------------------------|
| Brand                     | H.J. Heinz                      |
| Manufacturer Product Code | 71004000                        |
| Product Type              | Food                            |
| Product Category          | Beans & Pulses                  |
| Storage Type              | Ambient                         |
| Erudus ID                 | 09700423e97644ec9a175e026ff6eae |
| Specification Type        | Generic                         |



|                      |               |
|----------------------|---------------|
| Inner Component GTIN | 5000157024671 |
| Inner Pack GTIN      | 5000157024671 |
| Outer Case GTIN      | 5000157054838 |



## INGREDIENTS

### Ingredient Declaration

Beans (51%), Tomatoes (34%), Water, Sugar, Spirit Vinegar, Modified Cornflour, Salt, Spice Extracts, Herb Extract

## ALLERGENS

Product Contains:

|   |    |                                      |         |
|---|----|--------------------------------------|---------|
| <b>Celery/Celeriac</b>                      | No | <b>Mustard</b>                       | No      |
| <b>Cereals Containing Gluten</b>            | No | <b>Nuts (Tree)</b>                   | No      |
| <b>Barley</b>                               | No | <b>Almond nuts</b>                   | No      |
| <b>Oats</b>                                 | No | <b>Brazil nuts</b>                   | No      |
| <b>Rye</b>                                  | No | <b>Cashew nuts</b>                   | No      |
| <b>Wheat (including Spelt and Khorasan)</b> | No | <b>Hazelnuts</b>                     | No      |
| <b>Crustacea</b>                            | No | <b>Macadamia (Queensland) nuts</b>   | No      |
| <b>Eggs</b>                                 | No | <b>Pecan nuts</b>                    | No      |
| <b>Fish</b>                                 | No | <b>Pistachio nuts</b>                | No      |
| <b>Lupin</b>                                | No | <b>Walnuts</b>                       | No      |
| <b>Milk</b>                                 | No | <b>Peanuts</b>                       | No      |
| <b>Molluscs</b>                             | No | <b>Sesame Seeds</b>                  | No      |
|   |    | <b>Soybeans</b>                      | No      |
|   |    | <b>Sulphur Dioxide and Sulphites</b> | No      |
| <b>Palm Oil</b>                             | No | <b>Alcoholic Strength %Vol (ABV)</b> | 0 % Vol |
| <b>Hydrogenated Vegetable Oil/Fat</b>       | No |                                      |         |
| <b>GM Protein/DNA</b>                       | No |                                      |         |

## SUPPLEMENTARY INGREDIENT INFORMATION

ADDITIVES

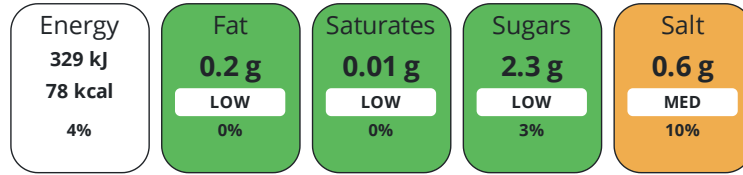
Product Contains:

|                                     |              |                                 |              |
|-------------------------------------|--------------|---------------------------------|--------------|
| <b>Artificial Antioxidants</b>      | No           | <b>Artificial Flavourings</b>   | No           |
| <b>Artificial Colours</b>           | No           | <b>Artificial Preservatives</b> | No           |
| <b>Artificial Flavour Enhancers</b> | No           | <b>Artificial Sweeteners</b>    | No           |
| <b>Vegan Diet</b>                   | Suitable for | <b>Vegetarian Diet</b>          | Suitable for |
| <b>Halal Diet</b>                   | No           | <b>Kosher Diet</b>              | No           |

DIET SUITABILITY

NUTRITIONAL INFORMATION

Each 100g/ml portion contains:



of your reference intake.

Typical values per 100g/ml : Energy 78kcal / 329kj

| Nutrient                  | per 100g | RI per 100g |
|---------------------------|----------|-------------|
| <b>Energy (kJ)</b>        | 329 kJ   | 4%          |
| <b>Energy (kcal)</b>      | 78 kcal  | 4%          |
| <b>Fat</b>                | 0.2 g    | 0%          |
| <b>of which Saturates</b> | 0.01 g   | 0%          |
| <b>Carbohydrate</b>       | 9.9 g    | 4%          |
| <b>of which Sugars</b>    | 2.3 g    | 3%          |
| <b>Protein</b>            | 4.7 g    | 9%          |
| <b>Salt</b>               | 0.6 g    | 10%         |

SUPPLEMENTARY NUTRITIONAL INFORMATION

HANDLING & STORAGE INFORMATION

**Directions For Use**

Cooking Instructions per can: Microwave (850W): Microwave ovens vary. The following is a guide only. Empty contents into a microwaveable container and cover. Heat on full power for 1.5 minutes. Stir, then heat for a further 1 minute. Check that product is hot before serving. Hob: Empty contents into a saucepan and stir gently while heating. Do not boil.

**Storage Instructions**

Store at ambient temperature. Once opened, refrigerate in a sealed container and use within two days.

|   |          |   |    |
|---|----------|---|----|
| <b>Shelf Life from Time of Production</b> | 480 Days | <b>Exempt From Shelf Life Labelling</b> | No |
|---|----------|---|----|

ACCREDITATIONS/ CERTIFICATIONS/ ASSURANCE SCHEMES



ORIGIN

**Product Country of Origin/Place of** United Kingdom

**Provenance**

**Additional Origin Details**

n/a

PRODUCT CHARACTERISTICS

Standards Testing

|                         |   |                  |                          |                           |                   |                   |                  |
|-------------------------|---|------------------|--------------------------|---------------------------|-------------------|-------------------|------------------|
| CONFIGURATION           | Case Configuration                                      |                  | Inner Pack Configuration |                           |                   |                   |                  |
|                         | <b>Total Quantity of Inner Components in Outer Case</b> | 24 Units         |                          |                           |                   |                   |                  |
|                         | <b>Is the Outer Case Splittable?</b>                    | No               |                          |                           |                   |                   |                  |
| PRODUCT WEIGHTS         | Inner Component   |                  |                          |                           |                   |                   |                  |
|                         | <b>Variable Weight Consumer Item</b>                    | No               |                          |                           |                   |                   |                  |
|                         | <b>Inner Component Weight</b>                           | 415 g            |                          |                           |                   |                   |                  |
|                         | Outer Case  |                  |                          |                           |                   |                   |                  |
|                         | <b>Outer Case Gross Weight</b>                          | 11.31 kg         |                          |                           |                   |                   |                  |
| PRODUCT DIMENSIONS      | <b>Outer Case Net Weight</b>                            | 9.96 kg          |                          |                           |                   |                   |                  |
|                         | Inner Component   |                  |                          |                           |                   |                   |                  |
|                         | <b>Inner Component Depth</b>                            | 75 mm            |                          |                           |                   |                   |                  |
|                         | <b>Inner Component Width</b>                            | 75 mm            |                          |                           |                   |                   |                  |
|                         | <b>Inner Component Height</b>                           | 108 mm           |                          |                           |                   |                   |                  |
|                         | Outer Case  |                  |                          |                           |                   |                   |                  |
|                         | <b>Outer Case Depth</b>                                 | 455 mm           |                          |                           |                   |                   |                  |
|                         | <b>Outer Case Width</b>                                 | 305 mm           |                          |                           |                   |                   |                  |
|                         | <b>Outer Case Height</b>                                | 110 mm           |                          |                           |                   |                   |                  |
| PALLET INFORMATION      | <b>Quantity of Cases Per Pallet Layer</b>               | 8 Cases          | <b>Pallet Height</b>     | 1.3 MTR                   |                   |                   |                  |
|                         | <b>Quantity of Layers Per Pallet</b>                    | 12 Layers        |                          |                           |                   |                   |                  |
|                         | <b>Quantity of Cases Per Pallet</b>                     | 96 Cases         |                          |                           |                   |                   |                  |
|                         | Inner Component Packaging                               |                  |                          |                           |                   |                   |                  |
| PACKAGING               | <b>Type</b>   | <b>Materials</b> | <b>Weight</b>            | <b>Recycled Plastic %</b> | <b>Recyclable</b> | <b>Returnable</b> | <b>Composite</b> |
|                         | Can   | Paper/Cardboard  | 0.97 g                   | - %                       |                   |                   |                  |
|                         | Can   | Steel            | 35.8 g                   | - %                       |                   |                   |                  |
|                         | Outer Case Packaging                                    |                  |                          |                           |                   |                   |                  |
|                         | <b>Type</b>   | <b>Materials</b> | <b>Weight</b>            | <b>Recycled Plastic %</b> | <b>Recyclable</b> | <b>Returnable</b> | <b>Composite</b> |
|                         | Case  | Plastic          | 153.69 g                 | - %                       |                   |                   |                  |
|                         | Case  | Paper/Cardboard  | 23.6 g                   | - %                       |                   |                   |                  |
|                         | OTHER INFORMATION CONTACT INFORMATION                   | Address          |                          |                           |                   |                   |                  |
|                         |   | H.J. Heinz       |                          |                           |                   |                   |                  |
|                         |   | The Shard        |                          |                           |                   |                   |                  |
| 32 London Bridge Street |   |                  |                          |                           |                   |                   |                  |
| London                  |   |                  |                          |                           |                   |                   |                  |
| SE1 9SG                 |   |                  |                          |                           |                   |                   |                  |
| England                 |   |                  |                          |                           |                   |                   |                  |
| P: (Phone) 02037 650500 |   |                  |                          |                           |                   |                   |                  |

The information on the [Erudus System](#) has been supplied by the manufacturers of the products and, whilst the owners of the Erudus System take steps to ensure the information is regularly updated, they give no warranty and no guarantee that the information is accurate. Product information and ingredients may change, please always read product labels carefully in addition to using the information provided by Erudus.

We do not accept liability for any inaccuracies or incorrect information contained on this site.  
Please visit <http://www.erudus.com/terms-and-conditions> for full terms and conditions.