

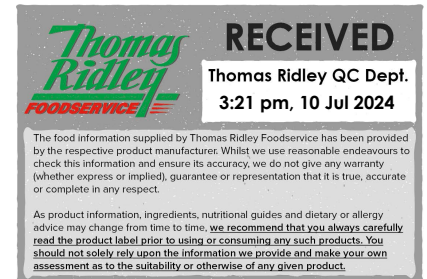
# Caterfoods Everyday Favourites Tuna Flakes in Brine 6 x 1880g

Tuna Flakes In Brine 6x

## PRODUCT DESCRIPTION

Tuna Flakes in Brine

<b>Brand</b>	Princes Limited
<b>Manufacturer Product Code</b>	410528
<b>Product Type</b>	Food
<b>Product Category</b>	Seafood - Fish
<b>Storage Type</b>	Ambient
<b>Erudus ID</b>	83f8c43cc3cc4a73accd82f4ebab092f
<b>Specification Type</b>	Legacy
<b>Inner Component GTIN</b>	5027615070698
<b>Outer Case GTIN</b>	05027615071718



## INGREDIENTS

### Ingredient Declaration

Tuna (FISH), Water, Salt

## ALLERGENS

Product Contains:

<b>Celery/Celериac</b>	No	<b>Mustard</b>	No
<b>Cereals Containing Gluten</b>	No	<b>Nuts (Tree)</b>	No
<b>Barley</b>	No	<b>Almond nuts</b>	No
<b>Oats</b>	No	<b>Brazil nuts</b>	No
<b>Rye</b>	No	<b>Cashew nuts</b>	No
<b>Wheat (including Spelt and Khorasan)</b>	No	<b>Hazelnuts</b>	No
<b>Gluten content &lt;20ppm</b>	Yes	<b>Macadamia (Queensland) nuts</b>	No
<b>Crustacea</b>	No	<b>Pecan nuts</b>	No
<b>Eggs</b>	No	<b>Pistachio nuts</b>	No
<b>Fish</b>	Yes	<b>Walnuts</b>	No
<b>Lupin</b>	No	<b>Peanuts</b>	No
<b>Milk</b>	No	<b>Sesame Seeds</b>	No
<b>Molluscs</b>	No	<b>Soybeans</b>	No
		<b>Sulphur Dioxide and Sulphites</b>	No

## SUPPLEMENTARY INGREDIENT INFORMATION

<b>Palm Oil</b>	No
<b>Hydrogenated Vegetable Oil/Fat</b>	No
<b>GM Protein/DNA</b>	No

## ADDITIVES

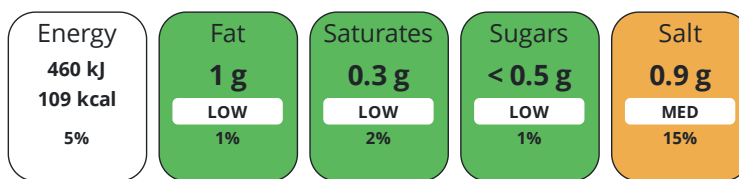
Product Contains:			
<b>Artificial Antioxidants</b>	No	<b>Artificial Flavourings</b>	No
<b>Artificial Colours</b>	No	<b>Artificial Preservatives</b>	No
<b>Artificial Flavour Enhancers</b>	No	<b>Artificial Sweeteners</b>	No

DIET  
SUITABILITY

<b>Suitable for Coeliacs</b>	Yes	<b>Halal Diet</b>	No
<b>Kosher Diet</b>	No	<b>Vegetarian Diet</b>	No
<b>Vegan Diet</b>	No		

NUTRITIONAL  
INFORMATION

Each 100g/ml portion contains:



of your reference intake.

Typical values per 100g/ml : Energy 109kcal / 460kj

Nutrient	per 100g/ml	RI per 100g/ml	per 73g/ml serving	RI per 73g/ml serving
<b>Energy (kJ)</b>	460 kJ	5%	335.8 kJ	4%
<b>Energy (kcal)</b>	109 kcal	5%	79.6 kcal	4%
<b>Fat</b>	1 g	1%	0.7 g	1%
<b>of which Saturates</b>	0.3 g	2%	0.2 g	1%
<b>of which Mono-unsaturates</b>	0.2 g		0.1 g	
<b>of which Polyunsaturates</b>	0.4 g		0.3 g	
<b>Carbohydrate</b>	< 0.5 g	0%	0.4 g	0%
<b>of which Sugars</b>	< 0.5 g	1%	0.4 g	0%
<b>Fibre</b>	< 0.5 g		0.4 g	
<b>Protein</b>	24.9 g	50%	18.2 g	36%
<b>Salt</b>	0.9 g	15%	0.7 g	12%
<b>Sodium</b>	354 mg		258.4 mg	

**Serving Size** 73 g

VITAMINS AND  
MINERALS

Nutrient	per 100g/ml	RI per 100g/ml	per 73g/ml serving	RI per 73g/ml serving
<b>Vitamin A</b>	26 µg	3%	19 µg	2%
<b>Vitamin C</b>	0 mg	0%	-	
<b>Folate/Folic Acid</b>	3 µg	2%	2.2 µg	1%
<b>Calcium</b>	10 mg	1%	7.3 mg	1%
<b>Iron</b>	1.5 mg	11%	1.1 mg	8%
<b>Zinc</b>	0.9 mg	9%	0.7 mg	7%

SUPPLEMENTARY  
NUTRITIONAL  
INFORMATION

**Trans Fats per 100 g/ml** 0 g

HANDLING &  
STORAGE  
INFORMATION

**Directions For Use**

Once opened, unused product should be transferred to a non metallic container, covered and stored in a refrigerator, used within 2 days

**Storage Instructions**

Store unopened in a cool dry place out of direct sunlight

**Shelf Life from Time of Production** 1095 Days

ACCREDITATIONS/  
CERTIFICATIONS/  
ASSURANCE  
SCHEMES  
ORIGIN

**BRCGS Certified**

**Product Country of Origin/Place of** Mauritius

**Provenance**

**Additional Origin Details**

Senegal, Indonesia

PRODUCT  
CHARACTERISTICS

Standards Testing

**Do you undertake trend analysis of microbiological results?** No

**Is shelf life testing undertaken?** No

CONFIGURATION

Case Configuration

Inner Pack Configuration

**Total Quantity of Inner Components in Outer Case** 6 Units

PRODUCT  
WEIGHTS

Inner Component

**Variable Weight Consumer Item** No

**Net Drained Weight** 1.332 kg

**Weight/Volume**

1.880kg

Outer Case

**Outer Case Gross Weight** 13 kg

**Outer Case Net Weight** 11.28 kg

PRODUCT  
DIMENSIONS

Inner Component

**Inner Component Depth** 603 mm

**Inner Component Width** 408 mm

**Inner Component Height** 0 mm

Outer Case

**Outer Case Depth** 471 mm

**Outer Case Width** 315 mm

**Outer Case Height** 118 mm

PALLET  
INFORMATION

**Quantity of Cases Per Pallet Layer** 7 Cases

**Pallet Height** 1.58 MTR

**Quantity of Layers Per Pallet** 12 Layers

**Pallet Gross Weight** 1118 kg

**Quantity of Cases Per Pallet** 84 Cases

PACKAGING

Inner Component Packaging

Type	Materials	Weight	Recycled Plastic %	Recyclable	Returnable	Composite
Can	Paper/Cardboard	5 g	- %			
Can	Steel	220.4 g	- %			

Outer Case Packaging

Type	Materials	Weight	Recycled Plastic %	Recyclable	Returnable	Composite
Can	Paper/Cardboard	416.7 g	- %			
Can	Steel	1322.4 g	- %			

Transport Packaging

Type	Materials	Weight	Recycled Plastic %	Recyclable	Returnable	Composite
Other	Plastic	1.79 g	- %			

OTHER  
INFORMATION

CONTACT  
INFORMATION

Address

Princes Limited  
Royal Liver Building  
Pier Head  
Liverpool  
L3 1NX  
England

P: (Phone) 0151 966 7000

Complaints Contact

Simon Porter  
National Account Manager  
simon.porter@princes.co.uk

P: (Phone) 01519667395

Technical Contact

Finished Product Specifications  
Specification Technologist  
PrincesGroupSpecifications@princes.co.uk

P: (Phone) 01406368380

Commercial Contact

Stephanie Ashton  
Senior National Account Manager  
stephanie.ashton@princes.co.uk

P: (Phone) 01519667395

The information on the [Erudus System](#) has been supplied by the manufacturers of the products and, whilst the owners of the Erudus System take steps to ensure the information is regularly updated, they give no warranty and no guarantee that the information is accurate. Product information and ingredients may change, please always read product labels carefully in addition to using the information provided by Erudus.

We do not accept liability for any inaccuracies or incorrect information contained on this site.  
Please visit <http://www.erudus.com/terms-and-conditions> for full terms and conditions.