

RECEIVED
Thomas Ridley QC Dept.
8:27 am, 10 Jul 2023

Thomas Ridley
FOODSERVICE

The food information supplied by Thomas Ridley Foodservice has been provided by the respective product manufacturers. Whilst we use reasonable endeavours to check this information and ensure its accuracy, we do not give any warranty (whether express or implied), guarantee or representation that it is true, accurate or complete in any respect.

As product information, ingredients, nutritional guides and dietary or allergy advice may change from time to time, we recommend that you always carefully read the product label prior to using or consuming any such products. You should not solely rely upon the information we provide and make your own assessment as to the suitability or otherwise of any given product.

Cadbury Twirl Chocolate Bar 43g



EAN
5000201499776

Target market(s)
GB, IE

Components

Ingredients

Milk

Sugar

Cocoa Butter

Cocoa Mass

Whey Powder (from **Milk**)

Vegetable Fats (Palm, Shea)

Emulsifiers (E442, E476)

Flavourings

Milk Solids 14 % minimum

Cocoa Solids 25 % minimum

Contains Vegetable Fats in addition to Cocoa Butter

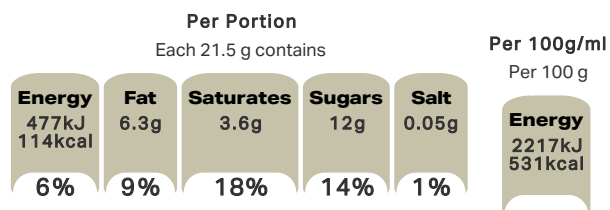
Nutrition

	Per 100 g:	Per finger (21.5 g):
Energy	2217 kJ (531 kcal)	477 kJ (114 kcal)
Fat	29 g	6.3 g
of which Saturates	17 g	3.6 g
Carbohydrate	58 g	13 g
of which Sugars	58 g	12 g
Fibre	2.3 g	0.5 g
Protein	7.0 g	1.5 g
Salt	0.25 g	0.05 g

Calculated Nutrition

	per 100g	Per finger (21.5 g):
Energy (kJ)	2217	477
Energy (kcal)	531	114
Fat (g)	29	6.3
of which saturates (g)	17	3.6
Carbohydrate (g)	58	13
of which sugars (g)	58	12
Fibre (g)	2.3	0.5
Protein (g)	7	1.5
Salt (g)	0.25	0.05

Front of Pack Nutrition



% reference intake of an average adult (8400 kJ / 2000 kcal)

Reference Intake Statement

Reference Intake Statement - % reference intake of an average adult (8400 kJ / 2000 kcal)

Product Description

Brand

Cadbury

Features

Suitable for vegetarians

Standardised Brand

Brand - Cadbury

Regulated Product Name

2 Milk chocolate fingers

Marketing

Company Name

Mondelez UK / Mondelez Ireland

Company Address

Mondelez UK,
PO Box 7008,
Birmingham,
B30 2PT.

Mondelez Ireland,
Malahide Road,
Coolock,
Dublin 5.

Third Party Logos

- Green Dot

Manufacturer Marketing

By Appointment to H.M. The Queen Cocoa and Chocolate Manufacturers Cadbury UK Ltd., Bournville.

Other Information

Made under licence from Cadbury UK Ltd.

Further Description

BeTreatwise.net

Get to know your treats

1x finger 1 portion = 6 % of the RI* of kcal

*% reference intake of an average adult (8400 kJ / 2000 kcal)

Cocoa Life

Partnering with Fairtrade Foundation

www.cocoalife.org

Health & Lifestyle

Lifestyle

- Suitable for Vegetarians

Allergy Advice

Milk - Contains

Storage & Usage

Storage Type

Type

Ambient

Storage

Store in a dry place. Protect from heat.

Brandbank Captured Pack Data

Pack Size

43g e

Numeric Size

Numeric Size - 43

Pack Type

Type - Wrap

Usage Count

Number of uses - Servings

2

Usage Other Text

1x finger = 1 Portion. 2 portions per pack

Customer Services

Manufacturers Address

Mondelez UK,
PO Box 7008,
Birmingham,
B30 2PT.

Mondelez Ireland,
Malahide Road,
Coolock,
Dublin 5.

Return To

We are passionate about our great quality Cadbury products. Not completely satisfied? Please contact us:

Freephone 0800 818181 (UK only)

Mondelez UK,
PO Box 7008,
Birmingham,
B30 2PT.

Mondelez Ireland,
Freephone 1-800 678708

Malahide Road,
Coolock,
Dublin 5.
www.cadbury.co.uk

Telephone Helpline

0800 818181 (UK)
1-800 678708

Web Address

www.cadbury.co.uk

