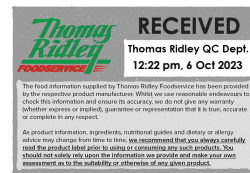


Supplier's Product Code : 10000695
 Product Added : 05 March 2021
 Last Updated by Supplier : 14 April 2023
 erudus id : 78f907901e5e40f3a41abc078898af3f



The information on the Erudus System has been supplied by the manufacturers of the products and, whilst the owners of the Erudus System take steps to ensure the information is regularly updated, they give no warranty and no guarantee that the information is accurate. Product information and ingredients may change, please always read product labels carefully in addition to using the information provided by Erudus One.

We do not accept liability for any inaccuracies or incorrect information contained on this site. Please visit <http://www.erudus.com/terms-and-conditions> for full terms and conditions.

Cadbury Milk Chocolate spread 6x400g e

Short Product Name:
Milk Chocolate Spread

Product Description:
Milk Chocolate Spread

General Information

Food/Drink :	Food
Product Category :	Ambient
Generic Product Type :	Not Provided

Supplier's Product Code :
10000695
Supplier: Hain Daniels Group
Templar House, 4225 Park Approach
Thorpe Park
Leeds
Yorkshire
LS15 8GB
England
P: 03300551638

OUTER PRODUCT

Outer case Information

Outer Case GTIN :	05000183601105	Outer Case Length :	237 mm
Packaging Type Description :	Case	Outer Case Width :	158 mm
Total Quantity of Inner Units in Outer Case :	6 Units	Outer Case Height :	115 mm
Is Trade Item Splittable? :	Yes	Product Gross Weight :	3.70 kg
		Product Net Weight :	2.40 kg

Pallet Information

Quantity of Cases Per Pallet Layer :	30 Cases	Pallet Height :	1.04 MTR
Quantity of Layers Per Pallet :	9 Layers	Pallet Gross Weight :	Not specified.
Quantity of Cases Per Pallet :	270 Cases		

Logistical Information

Shelf Life from Time of Production :	396 Days	Minimum Order Quantity :	Not specified.
Guaranteed Shelf Life on Delivery :	Not specified.	Delivery Lead Time :	Not specified.

Waste Packaging Weight - Outer Case

Glass :	0.00 g	Aluminium :	0.00 g
Plastic :	13.40 g	Steel :	0.00 g
Percentage Recycled Plastic :	Not specified.	Other :	0.00 g
Paper/Board :	31.00 g	Wood :	Not specified.
		Fibre Based Composite :	Not specified.

Waste Packaging Weight - Transport Packaging

Plastic :	Not specified.	Wood Total :	Not specified.
Paper/Board :	Not specified.	Is Pallet Returnable? :	Yes
Percentage Recycled Plastic :	Not specified.		

Other Information

Supplier Comments :
Not specified.

INNER PRODUCT

Origin Information

Product Country of Origin/Place of Provenance : Belgium

Additional Origin Details :
Made in Belgium

Inner Pack Information

Internal GTIN : 5000183501108

Packaging Type Description : Jar

Variable Weight Consumer Item : No

Net Drained Weight : Not specified.

Inner Unit Length : 75 mm

Inner Unit Height : 120 mm

Inner Unit Width : 75 mm

Inner Product Weight : 400.00 g

Inner Product Weight Units : g

Weight/Volume :
400g e

Handling Information

Directions For Use :
n/a

Storage Instructions :
Store at room temperature.

Dietary Information

Ingredients :

Sugar, Vegetable Oil (Rapeseed, Palm), Lactose (MILK), Milk Chocolate Crumb (7%) (MILK, Sugar, Cocoa Mass), Full Cream MILK Powder (7%), Fat Reduced Cocoa (5.5%), Whey Powder (MILK), Emulsifier: Lecithins, Flavouring.

Product contains:

GM Protein/DNA :	No
Celery/Celeriac (and products thereof) :	No
Lupin (and products thereof) :	No
Eggs (and products thereof) :	No
Fish (and products thereof) :	No
Soybeans (and products thereof) :	No
Milk (and products thereof) :	Yes
Mustard (and products thereof) :	No
Peanuts (and products thereof) :	No
Sesame Seeds (and products thereof) :	No
Crustacea (and products thereof) :	No
Molluscs (and products thereof) :	No
Nuts (and products thereof) :	May Contain
Almond nuts :	May Contain
Hazelnuts :	May Contain
Walnuts :	May Contain
Cashew nuts :	May Contain
Pecan nuts :	May Contain
Brazil nuts :	May Contain
Pistachio nuts :	May Contain
Macadamia nuts :	May Contain
Queensland nuts :	May Contain
Cereals Containing Gluten :	No
Wheat (and products thereof) :	No
Rye (and products thereof) :	No
Barley (and products thereof) :	No
Oats (and products thereof) :	No
Spelt (and products thereof) :	No
Kamut (and products thereof) :	No
Gluten content <20ppm :	-
Hydrogenated Vegetable Oil/Fat :	No
Palm Oil :	Yes
Sulphur Dioxide and Sulphites :	No
Sulphur Dioxide/Sulphites Concentration :	-

Product contains :

Artificial Antioxidants :	No
Artificial Colours :	No
Artificial Flavourings :	Yes
Artificial Flavour Enhancers :	No
Artificial Preservatives :	No
Artificial Sweeteners :	No

Product suitability:

Suitable for a Vegetarian Diet :	No
Suitable for a Vegan Diet :	No
Suitable for Sufferers of Lactose Intolerance :	No
Suitable for Coeliacs :	No
Approved for a Halal Diet :	No
Approved for a Kosher Diet :	No
HFSS (High in Fat, Salt and Sugar) :	-

Allergen Statement :

Contains Milk.
May contain Nuts.

Nutritional Information

Average Serving :	Not specified.
Count per 100g :	Not specified.
Count Per Pack :	Not specified.
Energy per 100 G/ML :	2,392.00 kJ
Energy per 100 G/ML :	574.00 kcal
Fat per 100 G/ML :	38 g
- of which Saturates per 100 G/ML :	8.7 g
- of which Mono-unsaturates per 100 G/ML :	Not specified.
- of which Polyunsaturates per 100 G/ML :	Not specified.
Trans Fats per 100 G\ML :	Not specified.
Carbohydrate Per 100 G/ML :	54 g
- of which Sugars per 100 G/ML :	53 g
- of which Polyols per 100 G/ML :	Not specified.
- of which Starch per 100 G/ML :	Not specified.
Fibre per 100 G/ML :	1.9 g
Protein per 100 G/ML :	3.9 g
Salt per 100 G/ML :	0.12 g
Sodium per 100 G\ML :	Not specified.

Vitamin A per 100g :	Not specified.
Vitamin C per 100g :	Not specified.
Folate/Folic Acid per 100g :	Not specified.
Calcium per 100g :	Not specified.
Iron per 100g :	Not specified.
Zinc per 100g :	Not specified.
Cholesterol per 100 G/ML (UK/FR) :	Not specified.
Non Milk Extrinsic Sugars per 100gm :	Not specified.
Alcoholic Strength %Vol :	Not specified.
Fat Percentage in Dry Matter per 100g :	Not specified.

Waste Packaging Weight - Inner Unit

Glass :	200.00 g
Plastic :	7.50 g
Percentage Recycled Plastic :	Not specified.
Paper/Board :	1.00 g

Aluminium :	0.00 g
Steel :	0.00 g
Other :	0.00 g
Wood :	Not specified.
Fibre Based Composite :	Not specified.

Accreditations / Certifications / Assurance Schemes

BRCGS Certified Production :	Yes
Red Tractor :	No
Fairtrade :	No
Marine Stewardship Council Certified (MSC) :	No
Organic :	No
SALSA (Safe & Local Supplier Approval) :	No
British Lion Mark :	No
RSPCA Assured :	No
LEAF Marque (Linking Environment and Farming) :	No
Rainforest Alliance :	No
Food for Life Supplier Scheme :	No
Quality Meat Scotland :	No
Farm Assured Welsh Livestock :	No
Northern Ireland Beef & Lamb Farm Quality Assurance Scheme :	No
Quality Standard Mark (Beef/Lamb) :	No
Roundtable of Sustainable Palm Oil (RSPO) :	No
School Approved (The Requirement for School Food Regulation 2014) :	No
IFS Food Standard :	No
Best Aquaculture Practices (BAP) Certification :	No
ISO 14001 (Environmental System) :	No
FSSC 22000 :	No

Other Accreditation : Not specified.	
Intra Stat/Taric Code :	Not specified.
Commodity Code :	1806906010
Identification/Health Marks :	Not specified.

Standards Testing

Do you undertake trend analysis of microbiological results? : No

Is shelf life testing undertaken? : No

Microbiological Standards

Not available.

Analytical Standards

Not available.