

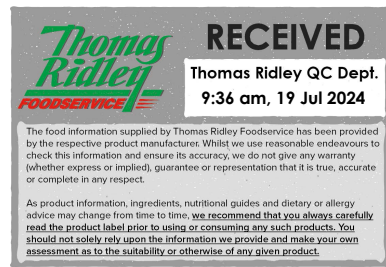
Changed Jul 18, 2024 11:59

Reviewed Jul 18, 2024 11:59

Erudus ID 7d1378aabc81411c961c96d450e62e7e

Version 3.0

25134



# Twinnings Assam Enveloped Tea Bags 1x4x20

Assam Enveloped Tea Bags 4x

## PRODUCT DESCRIPTION

Assam tea, strong, malty and a rich amber colour.

|                           |                                  |
|---------------------------|----------------------------------|
| Brand                     | R. Twinings & Co Ltd             |
| Manufacturer Product Code | F12424                           |
| Product Type              | Drink                            |
| Product Category          | Tea & Coffee                     |
| Storage Type              | Ambient                          |
| Erudus ID                 | 7d1378aabc81411c961c96d450e62e7e |
| Specification Type        | Drinks                           |
| Inner Component GTIN      | 0070177182199                    |
| Outer Case GTIN           | 0070177854911                    |



## INGREDIENTS

### Ingredient Declaration

100% Black Tea

## ALLERGENS

Product Contains:

|   |    |                                      |    |
|---|----|--------------------------------------|----|
| <b>Celery/Celериac</b>                      | No | <b>Mustard</b>                       | No |
| <b>Cereals Containing Gluten</b>            | No | <b>Nuts (Tree)</b>                   | No |
| <b>Barley</b>                               | No | <b>Almond nuts</b>                   | No |
| <b>Oats</b>                                 | No | <b>Brazil nuts</b>                   | No |
| <b>Rye</b>                                  | No | <b>Cashew nuts</b>                   | No |
| <b>Wheat (including Spelt and Khorasan)</b> | No | <b>Hazelnuts</b>                     | No |
| <b>Crustacea</b>                            | No | <b>Macadamia (Queensland) nuts</b>   | No |
| <b>Eggs</b>                                 | No | <b>Pecan nuts</b>                    | No |
| <b>Fish</b>                                 | No | <b>Pistachio nuts</b>                | No |
| <b>Lupin</b>                                | No | <b>Walnuts</b>                       | No |
| <b>Milk</b>                                 | No | <b>Peanuts</b>                       | No |
| <b>Molluscs</b>                             | No | <b>Sesame Seeds</b>                  | No |
|   |    | <b>Soybeans</b>                      | No |
|   |    | <b>Sulphur Dioxide and Sulphites</b> | No |

## SUPPLEMENTARY INGREDIENT INFORMATION

|                                       |    |
|---------------------------------------|----|
| <b>Palm Oil</b>                       | No |
| <b>Hydrogenated Vegetable Oil/Fat</b> | No |
| <b>GM Protein/DNA</b>                 | No |

## ADDITIVES

Product Contains:

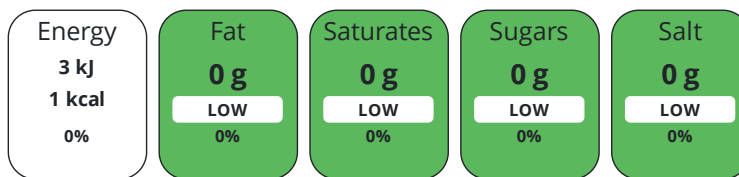
|                                     |    |                                 |    |
|-------------------------------------|----|---------------------------------|----|
| <b>Artificial Antioxidants</b>      | No | <b>Artificial Flavourings</b>   | No |
| <b>Artificial Colours</b>           | No | <b>Artificial Preservatives</b> | No |
| <b>Artificial Flavour Enhancers</b> | No | <b>Artificial Sweeteners</b>    | No |

DIET  
SUITABILITY

|                   |              |                        |              |
|-------------------|--------------|------------------------|--------------|
| <b>Vegan Diet</b> | Suitable for | <b>Vegetarian Diet</b> | Suitable for |
| <b>Halal Diet</b> | No           | <b>Kosher Diet</b>     | No           |

NUTRITIONAL  
INFORMATION

Each 100g/ml portion contains:



of your reference intake.

Typical values per 100g/ml : Energy 1kcal / 3kj

| Nutrient                  | per 100ml | RI per 100ml | per 200ml serving | RI per 200ml serving |
|---------------------------|-----------|--------------|-------------------|----------------------|
| <b>Energy (kJ)</b>        | 3 kJ      | 0%           | 6 kJ              | 0%                   |
| <b>Energy (kcal)</b>      | 1 kcal    | 0%           | 2 kcal            | 0%                   |
| <b>Fat</b>                | 0 g       | 0%           | -                 | -                    |
| <b>of which Saturates</b> | 0 g       | 0%           | -                 | -                    |
| <b>Carbohydrate</b>       | 0 g       | 0%           | -                 | -                    |
| <b>of which Sugars</b>    | 0 g       | 0%           | -                 | -                    |
| <b>Fibre</b>              | 0 g       | -            | -                 | -                    |
| <b>Protein</b>            | 0 g       | 0%           | -                 | -                    |
| <b>Salt</b>               | 0 g       | 0%           | -                 | -                    |
| <b>Serving Size</b>       | 200 ml    |              |                   |                      |

SUPPLEMENTARY  
NUTRITIONAL  
INFORMATION

HANDLING &  
STORAGE  
INFORMATION

**Directions For Use**

Brew for three to five minutes. Add milk and sugar to taste

**Storage Instructions**

Ambient

**Shelf Life from Time of Production** 730 Days

ACCREDITATIONS/  
CERTIFICATIONS/  
ASSURANCE  
SCHEMES  
ORIGIN

**BRCGS Certified**

**Other Accreditation**

**Product Country of Origin/Place of** Other

**Provenance**

**Additional Origin Details**

Poland

PRODUCT  
CHARACTERISTICS  
CONFIGURATION

Standards Testing

Case Configuration

Inner Pack Configuration

**Total Quantity of Inner Components in** 4 Units

**Outer Case**

**Is the Outer Case Splittable?** Yes

PRODUCT WEIGHTS

Inner Component

Outer Case

|                                |         |
|--------------------------------|---------|
| <b>Outer Case Gross Weight</b> | 0.34 kg |
| <b>Outer Case Net Weight</b>   | 0.16 kg |

PRODUCT DIMENSIONS

Inner Component

|                               |        |
|-------------------------------|--------|
| <b>Inner Component Depth</b>  | 78 mm  |
| <b>Inner Component Width</b>  | 129 mm |
| <b>Inner Component Height</b> | 68 mm  |

Outer Case

|                          |        |
|--------------------------|--------|
| <b>Outer Case Depth</b>  | 286 mm |
| <b>Outer Case Width</b>  | 81 mm  |
| <b>Outer Case Height</b> | 132 mm |

PALLET INFORMATION

|   |           |                            |           |
|---|-----------|----------------------------|-----------|
| <b>Quantity of Cases Per Pallet Layer</b> | 48 Cases  | <b>Pallet Height</b>       | 1.4 MTR   |
| <b>Quantity of Layers Per Pallet</b>      | 9 Layers  | <b>Pallet Gross Weight</b> | 176.18 kg |
| <b>Quantity of Cases Per Pallet</b>       | 432 Cases |                            |           |

PACKAGING

Inner Component Packaging

| Type | Materials       | Weight | Recycled Plastic % | Recyclable | Returnable | Composite |
|------|-----------------|--------|--------------------|------------|------------|-----------|
| Box  | Plastic         | 3 g    | - %                |            |            |           |
| Box  | Paper/Cardboard | 40 g   | - %                |            |            |           |

Outer Case Packaging

| Type | Materials       | Weight | Recycled Plastic % | Recyclable | Returnable | Composite |
|------|-----------------|--------|--------------------|------------|------------|-----------|
| Case | Plastic         | 3 g    | - %                |            |            |           |
| Case | Paper/Cardboard | 10 g   | - %                |            |            |           |

Transport Packaging

| Type  | Materials | Weight | Recycled Plastic % | Recyclable | Returnable | Composite |
|-------|-----------|--------|--------------------|------------|------------|-----------|
| Other | Plastic   | 350 g  | - %                |            |            |           |

MARKETING INFORMATION

**Marketing Description**

Imagine a land where elephants and tigers wander freely, and where lush green paddy fields sit under stormy skies. That place is Assam in North East India. The tea it produces is one of the world's most famous - a rich and strong, deep-amber tea that goes perfectly with brunch or after dinner instead of coffee.

OTHER INFORMATION

|                             |         |
|-----------------------------|---------|
| <b>Intrastat/Taric Code</b> | 9023000 |
|-----------------------------|---------|

**Manufacturer Comments**

Imagine a land where elephants and tigers wander freely, and where lush green paddy fields sit under stormy skies. That place is Assam in North East India. The tea it produces is one of the world's most famous - a rich and strong, deep-amber tea that goes perfectly with brunch or after dinner instead of coffee.

CONTACT INFORMATION

Address

R. Twinings & Co Ltd  
Andover  
SP10 5AQ  
England

P. (Phone) 01264 348181

Technical Contact

Neil Parry  
Customer Supply Team  
Neil.parry@twinings.com

P. (Phone) 01264 348181

The information on the [Erudus System](#) has been supplied by the manufacturers of the products and, whilst the owners of the Erudus System take steps to ensure the information is regularly updated, they give no warranty and no guarantee that the information is accurate. Product information and ingredients may change, please always read product labels carefully in addition to using the information provided by Erudus.

We do not accept liability for any inaccuracies or incorrect information contained on this site.  
Please visit <http://www.erudus.com/terms-and-conditions> for full terms and conditions.