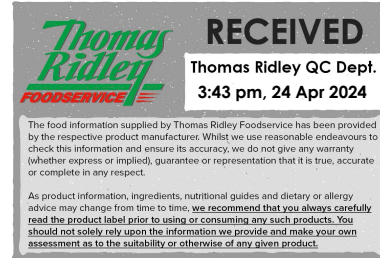


Changed Apr 24, 2024 10:34

Reviewed Apr 24, 2024 10:34

Erudus ID 6f75603f209c4354bddf64f2667d6508

Version 2.0



25162

Kellogg's Frosties Cereal Bars 25x25g

Frosties Cereal Bars 25x0.63kg

PRODUCT DESCRIPTION

Kellogg's Frosties Cereal Bars are the perfect way to take the grrreat taste of a bowl of Frosties with you anywhere you go. Our Kellogg's Frosties Cereal Bar combines Frosties' crunch with a milky layer. The bar is a source of calcium and vitamin D, making it great for kids and adults to enjoy throughout the day. Ideal for a mid-morning snack, children's lunch boxes, or a late-night sweet tooth, Kellogg's Frosties Cereal Bars will satisfy the most intense of cravings. Each bar is a source of vitamin D, B vitamins, and iron, and best of all they taste more than good, they're grrreat!

Brand	Kellanova (previously Kellogg's)
Manufacturer Product Code	7143977000
Product Type	Food
Product Category	Cereal Bars
Storage Type	Ambient
Erudus ID	6f75603f209c4354bddf64f2667d6508
Specification Type	Cereals



Inner Component GTIN	5000127770010
Outer Case GTIN	5050083439773



INGREDIENTS

Ingredient Declaration

Kellogg's toasted maize cereal (39%) (maize, sugar, BARLEY malt extract, salt, niacin, iron, vitamin B6, riboflavin, thiamin, folic acid, vitamin D, vitamin B12), sweetened condensed skimmed MILK (12%) (skimmed MILK, sugar), glucose syrup, vegetable oils (palm, coconut) in varying proportions, invert sugar syrup, skimmed MILK powder (5%), starch, sugar, fructose, humectants (glycerol, sorbitol), oligofructose, calcium carbonate, MILK whey powder, emulsifier (SOY lecithin), antioxidants (ascorbyl palmitate, alpha tocopherol), vanilla extract, natural flavouring, vitamin D.

ALLERGENS

Product Contains:

Celery/Celeriac	No	Mustard	No
Cereals Containing Gluten	Yes	Nuts (Tree)	No
Barley	Yes	Almond nuts	No
Oats	No	Brazil nuts	No
Rye	No	Cashew nuts	No
Wheat (including Spelt and Khorasan)	No	Hazelnuts	No
Crustacea	No	Macadamia (Queensland) nuts	No
Eggs	No	Pecan nuts	No
Fish	No	Pistachio nuts	No
Lupin	No	Walnuts	No
Milk	Yes	Peanuts	No
Molluscs	No	Sesame Seeds	No
		Soybeans	Yes
		Sulphur Dioxide and Sulphites	No

SUPPLEMENTARY INGREDIENT INFORMATION ADDITIVES

GM Protein/DNA	No
-----------------------	----

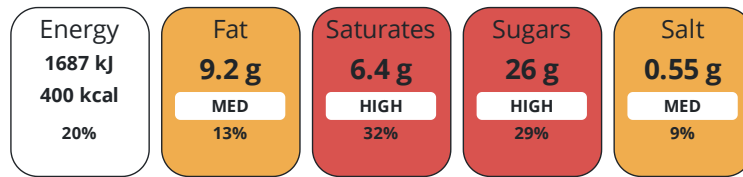
Product Contains:

DIET SUITABILITY

Vegan Diet	No	Vegetarian Diet	Suitable for
Halal Diet	No	Kosher Diet	No

NUTRITIONAL INFORMATION

Each 100g/ml portion contains:



of your reference intake.

Typical values per 100g/ml : Energy 400kcal / 1687kJ

Nutrient	per 100g	RI per 100g
Energy (kJ)	1687 kJ	20%
Energy (kcal)	400 kcal	20%
Fat	9.2 g	13%
of which Saturates	6.4 g	32%
Carbohydrate	72 g	28%
of which Sugars	26 g	29%
Fibre	3.2 g	
Protein	5.7 g	11%
Salt	0.55 g	9%

SUPPLEMENTARY NUTRITIONAL INFORMATION

HFSS (HIGH IN FAT, SALT AND SUGAR)

HFSS Status	Yes
--------------------	-----

HANDLING &
STORAGE
INFORMATION

Directions For Use

Eat as directed

Storage Instructions

Store in a cool dry place.

Shelf Life from Time of Production	365 Days	Exempt From Shelf Life Labelling	No
---	----------	---	----

ORIGIN

Product Country of Origin/Place of European Union

Provenance

PRODUCT
CHARACTERISTICS
CONFIGURATION

Standards Testing

Case Configuration

Inner Pack Configuration

Total Quantity of Inner Components in 25 Units

Outer Case

Is the Outer Case Splittable? No

PRODUCT
WEIGHTS

Inner Component

Variable Weight Consumer Item No

Inner Component Weight 0.63 kg

Outer Case

Outer Case Gross Weight 0.74 kg

Outer Case Net Weight 0.63 kg

PRODUCT
DIMENSIONS

Inner Component

Inner Component Depth 22 mm

Inner Component Width 120 mm

Inner Component Height 30 mm

Outer Case

Outer Case Depth 238 mm

Outer Case Width 132 mm

Outer Case Height 132 mm

PALLET
INFORMATION

Quantity of Cases Per Pallet Layer 36 Cases

Pallet Height 2.7 MTR

Quantity of Layers Per Pallet 18 Layers

Pallet Gross Weight 547 kg

Quantity of Cases Per Pallet 648 Cases

PACKAGING

Inner Component Packaging

Type	Materials	Weight	Recycled Plastic %	Recyclable	Returnable	Composite
Foil	Plastic	0.759 g	- %	Yes		

Outer Case Packaging

Type	Materials	Weight	Recycled Plastic %	Recyclable	Returnable	Composite
Case	Paper/Cardboard	95 g	- %	Yes		

OTHER
INFORMATION

CONTACT
INFORMATION

Address

Kellanova (previously Kellogg's)
Kellogg
Orange Tower
Salford
Greater Manchester
M50 2HF
England

P. (Phone) 07716254258

Commercial Contact

Chris Duffy
National Account Executive
Chris.Duffy@kellogg.com

The information on the [Erudus System](#) has been supplied by the manufacturers of the products and, whilst the owners of the Erudus System take steps to ensure the information is regularly updated, they give no warranty and no guarantee that the information is accurate. Product information and ingredients may change, please always read product labels carefully in addition to using the information provided by Erudus.

We do not accept liability for any inaccuracies or incorrect information contained on this site.
Please visit <http://www.erudus.com/terms-and-conditions> for full terms and conditions.