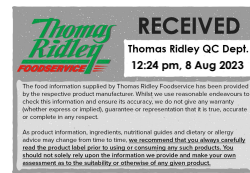


Supplier's Product Code : 16050
 Product Added : 10 April 2013
 Last Updated by Supplier : 02 March 2022
 erudus id : 84f42d83a64b45c5ba3b3a013666d30d



The information on the Erudus System has been supplied by the manufacturers of the products and, whilst the owners of the Erudus System take steps to ensure the information is regularly updated, they give no warranty and no guarantee that the information is accurate. Product information and ingredients may change, please always read product labels carefully in addition to using the information provided by Erudus One.

We do not accept liability for any inaccuracies or incorrect information contained on this site. Please visit <http://www.erudus.com/terms-and-conditions> for full terms and conditions.

Strawberry Preserve 72x28g

Short Product Name:

Product Description:

Strawberry Preserve

General Information

Food/Drink :	Food
Product Category :	Ambient
Generic Product Type :	Preserves

Supplier's Product Code :
 16050
Supplier: Wilkin and Sons Ltd (Tiptree)
 Wilkin & Sons Ltd.
 Factory Hill
 Tiptree
 Essex
 CO5 0RF
 United Kingdom
 P: 01621815407

OUTER PRODUCT

Outer case Information

Outer Case GTIN :	00043647160508	Outer Case Length :	274 mm
Packaging Type Description :	Paper/Polyethylene	Outer Case Width :	184 mm
Total Quantity of Inner Units in Outer Case :	72 Units	Outer Case Height :	128 mm
Is Trade Item Splittable? :	Yes	Product Gross Weight :	5.80 kg
		Product Net Weight :	2.00 kg

Pallet Information

Quantity of Cases Per Pallet Layer :	20 Cases	Pallet Height :	0.90 MTR
Quantity of Layers Per Pallet :	6 Layers	Pallet Gross Weight :	721.00 kg
Quantity of Cases Per Pallet :	120 Cases		

Logistical Information

Shelf Life from Time of Production :	1,095 Days	Minimum Order Quantity :	50 Cases
Guaranteed Shelf Life on Delivery :	730 Days	Delivery Lead Time :	5 Days

Waste Packaging Weight - Outer Case

Glass :	0.00 g	Aluminium :	0.00 g
Plastic :	12.00 g	Steel :	0.00 g
Percentage Recycled Plastic :	30.00 %	Other :	0.00 g
Paper/Board :	88.00 g		

Waste Packaging Weight - Transport Packaging

Plastic :	450.00 g	Wood Total :	25,000.00 g
Paper/Board :	10.00 g	Is Pallet Returnable? :	No
Percentage Recycled Plastic :	Not specified.		

Other Information

Supplier Comments :	N/A
----------------------------	-----

INNER PRODUCT

Origin Information

Product Country of Origin/Place of Provenance:	United Kingdom
--	----------------

Additional Origin Details:
N/A

Inner Pack Information

Internal GTIN:	Not specified.
----------------	----------------

Packaging Type Description:	Jar
-----------------------------	-----

Variable Weight Consumer Item:	No
--------------------------------	----

Net Drained Weight:	0.000 kg
---------------------	----------

Inner Unit Length:	42 mm
--------------------	-------

Inner Unit Height:	40 mm
--------------------	-------

Inner Unit Width:	42 mm
-------------------	-------

Inner Product Weight:	Not specified.
-----------------------	----------------

Inner Product Weight Units:	g
-----------------------------	---

Weight/Volume:
28g

Handling Information

Directions For Use:
ready to eat

Storage Instructions:
Store at ambient temperature

Dietary Information

Ingredients :

Sugar, Strawberries, Gelling Agent: Citrus Pectin, Acidity Regulator: Citric Acid

Product contains:

GM Protein/DNA :	No
Celery/Celeriac (and products thereof) :	No
Lupin (and products thereof) :	No
Eggs (and products thereof) :	No
Fish (and products thereof) :	No
Soybeans (and products thereof) :	No
Milk (and products thereof) :	No
Mustard (and products thereof) :	No
Peanuts (and products thereof) :	No
Sesame Seeds (and products thereof) :	No
Crustacea (and products thereof) :	No
Molluscs (and products thereof) :	No
Nuts (and products thereof) :	No
Almond nuts :	No
Hazelnuts :	No
Walnuts :	No
Cashew nuts :	No
Pecan nuts :	No
Brazil nuts :	No
Pistachio nuts :	No
Macadamia nuts :	No
Queensland nuts :	No
Cereals Containing Gluten :	No
Wheat (and products thereof) :	No
Rye (and products thereof) :	No
Barley (and products thereof) :	No
Oats (and products thereof) :	No
Spelt (and products thereof) :	No
Kamut (and products thereof) :	No
Gluten content <20ppm :	-
Hydrogenated Vegetable Oil/Fat :	No
Palm Oil :	No
Sulphur Dioxide and Sulphites :	No
Sulphur Dioxide/Sulphites Concentration :	0

Product contains :

Artificial Antioxidants :	No
Artificial Colours :	No
Artificial Flavourings :	No
Artificial Flavour Enhancers :	No
Artificial Preservatives :	No
Artificial Sweeteners :	No

Product suitability:

Suitable for a Vegetarian Diet :	Yes
Suitable for a Vegan Diet :	Yes
Suitable for Sufferers of Lactose Intolerance :	Yes
Suitable for Coeliacs :	Yes
Approved for a Halal Diet :	No
Approved for a Kosher Diet :	Yes
HFSS (High in Fat, Salt and Sugar) :	-

Allergen Statement :

Not specified.

Nutritional Information

Average Serving :	14.00 g or ml
Count per 100g :	Not specified.
Count Per Pack :	Not specified.
Energy per 100 G/ML :	1,145.00 kJ
Energy per 100 G/ML :	270.00 kcal
Fat per 100 G/ML :	0 g
- of which Saturates per 100 G/ML :	0 g
- of which Mono-unsaturates per 100 G/ML :	Not specified.
- of which Polyunsaturates per 100 G/ML :	Not specified.
Trans Fats per 100 G\ML :	Not specified.
Carbohydrate Per 100 G/ML :	66 g
- of which Sugars per 100 G/ML :	66 g
- of which Polyols per 100 G/ML :	0.00 g
- of which Starch per 100 G/ML :	0.00 g
Fibre per 100 G/ML :	0 g
Protein per 100 G/ML :	0 g
Salt per 100 G/ML :	0 g
Sodium per 100 G\ML :	Not specified.

Vitamin A per 100g :	1.00 µg
Vitamin C per 100g :	24.00 mg
Folate/Folic Acid per 100g :	10.00 µg
Calcium per 100g :	16.00 mg
Iron per 100g :	0.60 mg
Zinc per 100g :	0.10 mg
Cholesterol per 100 G/ML (UK/FR) :	0.00 g
Non Milk Extrinsic Sugars per 100gm :	Not specified.
Alcoholic Strength %Vol :	Not specified.
Fat Percentage in Dry Matter per 100g :	Not specified.

Waste Packaging Weight - Inner Unit

Glass :	45.00 g
Plastic :	0.00 g
Percentage Recycled Plastic :	Not specified.
Paper/Board :	0.10 g

Aluminium :	0.00 g
Steel :	4.00 g
Other :	0.00 g

Accreditations / Certifications / Assurance Schemes

BRCGS Certified Production :	Yes
Red Tractor :	No
Fairtrade :	No
Marine Stewardship Council Certified (MSC) :	No
Organic :	No
SALSA (Safe & Local Supplier Approval) :	No
British Lion Mark :	No
RSPCA Assured :	No
LEAF Marque (Linking Environment and Farming) :	No
Rainforest Alliance :	No
Food for Life Supplier Scheme :	No
Quality Meat Scotland :	No
Farm Assured Welsh Livestock :	No
Northern Ireland Beef & Lamb Farm Quality Assurance Scheme :	No
Quality Standard Mark (Beef/Lamb) :	No
Roundtable of Sustainable Palm Oil (RSPO) :	No
School Approved (The Requirement for School Food Regulation 2014) :	No
IFS Food Standard :	No
Best Aquaculture Practices (BAP) Certification :	No
ISO 14001 (Environmental System) :	No
FSSC 22000 :	No

Other Accreditation :	N/A
Intra Stat/Taric Code :	Not specified.
Commodity Code :	Not specified.
Identification/Health Marks :	Not specified.

Standards Testing

Do you undertake trend analysis of microbiological results? : No

Is shelf life testing undertaken? : No

Microbiological Standards

Not available.

Analytical Standards

Test	Frequency	Target	Range	Sample (g or ml)	Note
Sugar Content (%)	Hourly	>60	64 to 70	-	