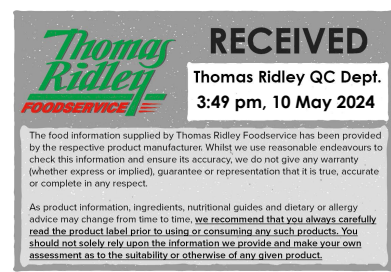


Changed May 10, 2024 13:50
Reviewed May 10, 2024 13:50
Erudus ID 3f3b9d5c87664d55be9e1dbf3b42539b
Version 2.0



26031

Heinz Spaghetti in Tomato Sauce (24) 400g

Spaghetti In Tomato Sauce 24x400g

PRODUCT DESCRIPTION

Spaghetti in a juicy tomato sauce

Brand	H.J. Heinz
Manufacturer Product Code	71014089
Product Type	Food
Product Category	Pasta, Rice and Noodles
Storage Type	Ambient
Erudus ID	3f3b9d5c87664d55be9e1dbf3b42539b
Specification Type	Generic



Inner Component GTIN	5000157006875
Outer Case GTIN	05000157041463



INGREDIENTS

Ingredient Declaration

Spaghetti (47%, Water, Durum WHEAT, Semolina, WHEAT Flour (contains Calcium, Iron, Niacin, Thiamin)), Tomatoes (44%), Water, Sugar, Modified Cornflour, Salt, Acid - Citric Acid, Herb Extract, Garlic Salt, Spice Extract

ALLERGENS

Product Contains:

Celery/Celeriac	No
Cereals Containing Gluten	Yes
Barley	No
Oats	No
Rye	No
Wheat (including Spelt and Khorasan)	Yes
Crustacea	No
Eggs	No
Fish	No
Lupin	No
Milk	No
Molluscs	No
Mustard	No
Nuts (Tree)	No
Almond nuts	No
Brazil nuts	No
Cashew nuts	No
Hazelnuts	No
Macadamia (Queensland) nuts	No
Pecan nuts	No
Pistachio nuts	No
Walnuts	No
Peanuts	No
Sesame Seeds	No
Soybeans	No
Sulphur Dioxide and Sulphites	No

SUPPLEMENTARY INGREDIENT INFORMATION

Palm Oil	No
Hydrogenated Vegetable Oil/Fat	No
GM Protein/DNA	No
Alcoholic Strength %Vol (ABV)	0 % Vol

ADDITIVES

Product Contains:

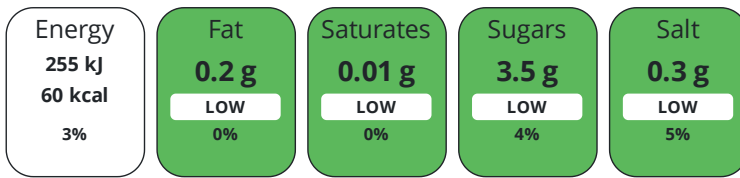
Artificial Antioxidants	No
Artificial Colours	No
Artificial Flavour Enhancers	No
Artificial Flavourings	No
Artificial Preservatives	No
Artificial Sweeteners	No

DIET SUITABILITY

Vegan Diet	No	Vegetarian Diet	Suitable for
Halal Diet	No	Kosher Diet	No

NUTRITIONAL INFORMATION

Each 100g/ml portion contains:



of your reference intake.

Typical values per 100g/ml : Energy 60kcal / 255kj

Nutrient	per 100g	RI per 100g	per 200g serving	RI per 200g serving
Energy (kJ)	255 kJ	3%	510 kJ	6%
Energy (kcal)	60 kcal	3%	120 kcal	6%
Fat	0.2 g	0%	0.4 g	1%
of which Saturates	0.01 g	0%	-	
Carbohydrate	12.5 g	5%	25 g	10%
of which Sugars	3.5 g	4%	7 g	8%
Fibre	0.8 g		1.6 g	
Protein	1.6 g	3%	3.2 g	6%
Salt	0.3 g	5%	0.6 g	10%
Sodium	120 mg		240 mg	
Serving Size			200 g	

SUPPLEMENTARY NUTRITIONAL INFORMATION

HANDLING & STORAGE INFORMATION

Directions For Use

Cooking instructions: Microwave (850): Microwave ovens vary. The following is a guide only. Empty contents into a microwaveable container and cover. Heat on full power for 1.5 minutes. Stir, then heat for a further minute. Check that product is hot before serving. Hob: Empty contents into a saucepan and stir gently while heating. Do not boil.

Storage Instructions

Refrigerate after opening and use within 2 days

Shelf Life from Time of Production

456 Days

Exempt From Shelf Life Labelling

No

ACCREDITATIONS/ CERTIFICATIONS/ ASSURANCE SCHEMES

BRCGS Certified

Other Accreditation

ORIGIN

Product Country of Origin/Place of

United Kingdom

Provenance

Additional Origin Details

n/a

PRODUCT CHARACTERISTICS

Standards Testing

CONFIGURATION

Case Configuration

Total Quantity of Inner Components in Outer Case

24 Units

Is the Outer Case Splittable?

No

Inner Pack Configuration

PRODUCT WEIGHTS
Inner Component

Variable Weight Consumer Item	No
Inner Component Weight	400 g
Outer Case	
Outer Case Gross Weight	11 kg
Outer Case Net Weight	9.6 kg

PRODUCT DIMENSIONS
Inner Component

Inner Component Depth	75 mm
Inner Component Width	75 mm
Inner Component Height	108 mm

Outer Case

Outer Case Depth	455 mm
Outer Case Width	305 mm
Outer Case Height	111 mm

PALLET INFORMATION

Quantity of Cases Per Pallet Layer	8 Cases
Quantity of Layers Per Pallet	12 Layers
Quantity of Cases Per Pallet	96 Cases
Pallet Height	1.5 MTR
Pallet Gross Weight	999.99 kg

PACKAGING

Inner Component Packaging

Type	Materials	Weight	Recycled Plastic %	Recyclable	Returnable	Composite
Can	Plastic	7.9 g	- %			
Can	Paper/Cardboard	11.5 g	- %			
Can	Steel	299 g	- %			

Outer Case Packaging

Type	Materials	Weight	Recycled Plastic %	Recyclable	Returnable	Composite
Case	Plastic	21.4 g	- %			
Case	Paper/Cardboard	78.1 g	- %			

Transport Packaging

Type	Materials	Weight	Recycled Plastic %	Recyclable	Returnable	Composite
Other	Plastic	213 g	- %			
Other	Paper/Cardboard	2.8 g	- %			
Other	Wood	28000 g	- %			

OTHER INFORMATION

Manufacturer Comments

n/a

CONTACT INFORMATION

Address

H.J. Heinz
The Shard
32 London Bridge Street
London
SE1 9SG
England

P: (Phone) 02037 650500

The information on the [Erudus System](#) has been supplied by the manufacturers of the products and, whilst the owners of the Erudus System take steps to ensure the information is regularly updated, they give no warranty and no guarantee that the information is accurate. Product information and ingredients may change, please always read product labels carefully in addition to using the information provided by Erudus.

We do not accept liability for any inaccuracies or incorrect information contained on this site.
Please visit <http://www.erudus.com/terms-and-conditions> for full terms and conditions.