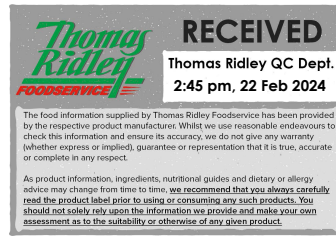


Changed Feb 21, 2024 13:44

Reviewed Feb 21, 2024 13:44

Erudus ID 75930e975ba843c1b70b8cfaafa7b89a

Version 2.0



26037

# Heinz Spaghetti Hoops in Tomato Sauce (24) 400g

Spaghetti Hoops In Tomato Sauce 24x400g

## PRODUCT DESCRIPTION

Spaghetti hoops in a rich tomato sauce

Brand	H.J. Heinz
Manufacturer Product Code	76005018, 71014432, 76003100, 76010588
Product Type	Food
Product Category	Pasta, Rice and Noodles
Storage Type	Ambient
Erudus ID	75930e975ba843c1b70b8cfaafa7b89a
Specification Type	Generic



Inner Component GTIN	5000157006899
Outer Case GTIN	05000157041487



## INGREDIENTS

### Ingredient Declaration

Spaghetti Hoops (42%, Water, Durum WHEAT Semolina), Tomatoes (41%), Water, Sugar, Modified Cornflour, Salt, Acid - Citric Acid, Spice, Garlic Salt, Onion Extract, Spice Extract, Iron Sulphate, Vitamin D

## ALLERGENS

Product Contains:

Celery/Celериac	No	Mustard	No
Cereals Containing Gluten	Yes	Nuts (Tree)	No
Barley	No	Almond nuts	No
Oats	No	Brazil nuts	No
Rye	No	Cashew nuts	No
Wheat (including Spelt and Khorasan)	Yes	Hazelnuts	No
Crustacea	No	Macadamia (Queensland) nuts	No
Eggs	May Contain	Pecan nuts	No
Fish	No	Pistachio nuts	No
Lupin	No	Walnuts	No
Milk	No	Peanuts	No
Molluscs	No	Sesame Seeds	No
		Soybeans	No
		Sulphur Dioxide and Sulphites	No

Risk Source:

SUPPLEMENTARY  
INGREDIENT  
INFORMATION

<b>Palm Oil</b>	No	<b>Alcoholic Strength %Vol (ABV)</b>	0 % Vol
<b>Hydrogenated Vegetable Oil/Fat</b>	No		
<b>GM Protein/DNA</b>	No		

ADDITIVES

*Product Contains:*

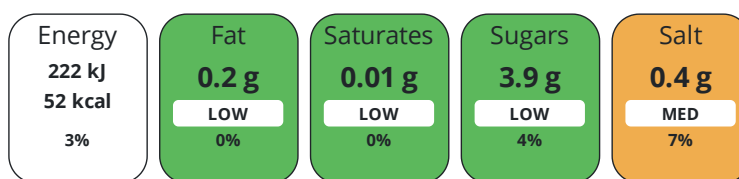
<b>Artificial Antioxidants</b>	No	<b>Artificial Flavourings</b>	No
<b>Artificial Colours</b>	No	<b>Artificial Preservatives</b>	No
<b>Artificial Flavour Enhancers</b>	No	<b>Artificial Sweeteners</b>	No

DIET  
SUITABILITY

<b>Vegan Diet</b>	No	<b>Vegetarian Diet</b>	Suitable for
<b>Halal Diet</b>	No	<b>Kosher Diet</b>	No

NUTRITIONAL  
INFORMATION

Each 100g/ml portion contains:



of your reference intake.

Typical values per 100g/ml : Energy 52kcal / 222kj

Nutrient	per 100g	RI per 100g	per 200g serving	RI per 200g serving
<b>Energy (kJ)</b>	222 kJ	3%	444 kJ	5%
<b>Energy (kcal)</b>	52 kcal	3%	104 kcal	5%
<b>Fat</b>	0.2 g	0%	0.4 g	1%
<b>of which Saturates</b>	0.01 g	0%	-	
<b>Carbohydrate</b>	10.6 g	4%	21.2 g	8%
<b>of which Sugars</b>	3.9 g	4%	7.8 g	9%
<b>Fibre</b>	0.6 g		1.2 g	
<b>Protein</b>	1.7 g	3%	3.4 g	7%
<b>Salt</b>	0.4 g	7%	0.8 g	13%
<b>Sodium</b>	160 mg		320 mg	
<b>Serving Size</b>	200 g			

SUPPLEMENTARY  
NUTRITIONAL  
INFORMATION

HANDLING &  
STORAGE  
INFORMATION

**Directions For Use**

How to cook Microwave (850W): Use a covered microwaveable container. Heat for 1.5 minutes, stir. Heat for a further 1 minute.  
Hob: Heat gently in a pan.

**Storage Instructions**

Empty unused contents into a suitable covered container. Keep refrigerated and use within 2 days.

<b>Shelf Life from Time of Production</b>	360 Days	<b>Exempt From Shelf Life Labelling</b>	No
---	----------	---	----

ACCREDITATIONS/  
CERTIFICATIONS/  
ASSURANCE  
SCHEMES



ORIGIN	<b>Product Country of Origin/Place of Provenance</b>		United Kingdom			
	<b>Additional Origin Details</b>					
	n/a					
PRODUCT CHARACTERISTICS	Standards Testing					
	<b>Do you undertake trend analysis of microbiological results?</b>	Yes	<b>Is shelf life testing undertaken?</b>		Yes	
CONFIGURATION	Case Configuration		Inner Pack Configuration			
	<b>Total Quantity of Inner Components in Outer Case</b>	24 Units				
	<b>Is the Outer Case Splittable?</b>	No				
PRODUCT WEIGHTS	Inner Component					
	<b>Variable Weight Consumer Item</b>	No				
	<b>Inner Component Weight</b>	400 g				
	Outer Case					
	<b>Outer Case Gross Weight</b>	10.92 kg				
	<b>Outer Case Net Weight</b>	9.6 kg				
PRODUCT DIMENSIONS	Inner Component					
	<b>Inner Component Depth</b>	75 mm				
	<b>Inner Component Width</b>	75 mm				
	<b>Inner Component Height</b>	108 mm				
	Outer Case					
	<b>Outer Case Depth</b>	455 mm				
	<b>Outer Case Width</b>	296 mm				
	<b>Outer Case Height</b>	111 mm				
PALLET INFORMATION	<b>Quantity of Cases Per Pallet Layer</b>	8 Cases	<b>Pallet Height</b>		1.5 MTR	
	<b>Quantity of Layers Per Pallet</b>	12 Layers	<b>Pallet Gross Weight</b>		1075.32 kg	
	<b>Quantity of Cases Per Pallet</b>	96 Cases				
PACKAGING	Inner Component Packaging					
	<b>Type</b>	<b>Materials</b>	<b>Weight</b>	<b>Recycled Plastic %</b>	<b>Recyclable</b>	<b>Returnable</b>
	Can	Paper/Cardboard	1.93 g	- %		
	Can	Steel	49.86 g	- %		
	Outer Case Packaging					
	<b>Type</b>	<b>Materials</b>	<b>Weight</b>	<b>Recycled Plastic %</b>	<b>Recyclable</b>	<b>Returnable</b>
	Case	Plastic	1.1 g	- %		
	Case	Paper/Cardboard	3.28 g	- %		
OTHER INFORMATION						

CONTACT  
INFORMATION

Address

H.J. Heinz  
The Shard  
32 London Bridge Street  
London  
SE1 9SG  
England

P: (Phone) 02037 650500

The information on the [Erudus System](#) has been supplied by the manufacturers of the products and, whilst the owners of the Erudus System take steps to ensure the information is regularly updated, they give no warranty and no guarantee that the information is accurate. Product information and ingredients may change, please always read product labels carefully in addition to using the information provided by Erudus.

We do not accept liability for any inaccuracies or incorrect information contained on this site.  
Please visit <http://www.erudus.com/terms-and-conditions> for full terms and conditions.