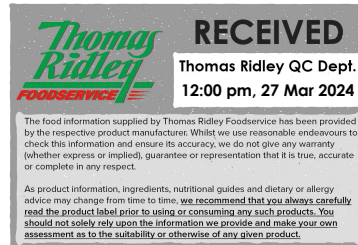


Changed Mar 27, 2024 11:32

Reviewed Mar 27, 2024 11:32

Erudus ID 9d90ae53817f4326a397935f16363a41

Version 2.0



27003

# Heinz Classic Cream of Tomato Soup (12) 300g

Cream Of Tomato Soup 12x300g

## PRODUCT DESCRIPTION

Cream of tomato soup

Brand	H.J. Heinz
Manufacturer Product Code	76004819
Product Type	Food
Product Category	Soup
Storage Type	Ambient
Erudus ID	9d90ae53817f4326a397935f16363a41
Specification Type	Generic
Inner Component GTIN	5000157062475
Outer Case GTIN	05000157083913



## INGREDIENTS

### Ingredient Declaration

Tomatoes (89%), Water, Modified Cornflour, Sugar, Rapeseed Oil, Dried Skimmed MILK, Salt, Cream (MILK), MILK Proteins, Acidity Regulator - Citric Acid, Spice Extracts, Herb Extract

## ALLERGENS

Product Contains:

Celery/Celeriac	No	Mustard	No
Cereals Containing Gluten	No	Nuts (Tree)	No
Barley	No	Almond nuts	No
Oats	No	Brazil nuts	No
Rye	No	Cashew nuts	No
Wheat (including Spelt and Khorasan)	No	Hazelnuts	No
Crustacea	No	Macadamia (Queensland) nuts	No
Eggs	No	Pecan nuts	No
Fish	No	Pistachio nuts	No
Lupin	No	Walnuts	No
Milk	Yes	Peanuts	No
Molluscs	No	Sesame Seeds	No
		Soybeans	No
		Sulphur Dioxide and Sulphites	No
Palm Oil	No	Alcoholic Strength %Vol (ABV)	0 % Vol
Hydrogenated Vegetable Oil/Fat	No		
GM Protein/DNA	No		

## SUPPLEMENTARY INGREDIENT INFORMATION

ADDITIVES

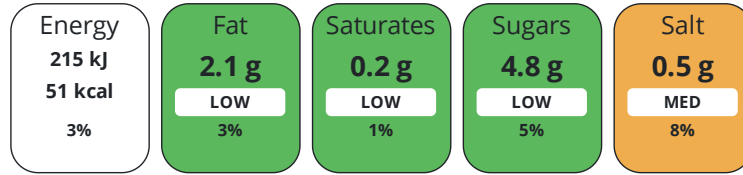
Product Contains:

<b>Artificial Antioxidants</b>	No	<b>Artificial Flavourings</b>	No
<b>Artificial Colours</b>	No	<b>Artificial Preservatives</b>	No
<b>Artificial Flavour Enhancers</b>	No	<b>Artificial Sweeteners</b>	No
<b>Vegan Diet</b>	No	<b>Vegetarian Diet</b>	Suitable for
<b>Halal Diet</b>	No	<b>Kosher Diet</b>	No

DIET  
SUITABILITY

NUTRITIONAL  
INFORMATION

Each 100g/ml portion contains:



of your reference intake.

Typical values per 100g/ml : Energy 51kcal / 215kj

Nutrient	per 100g	RI per 100g	per 300g serving	RI per 300g serving
<b>Energy (kJ)</b>	215 kJ	3%	645 kJ	8%
<b>Energy (kcal)</b>	51 kcal	3%	153 kcal	8%
<b>Fat</b>	2.1 g	3%	6.3 g	9%
<b>of which Saturates</b>	0.2 g	1%	0.6 g	3%
<b>Carbohydrate</b>	6.8 g	3%	20.4 g	8%
<b>of which Sugars</b>	4.8 g	5%	14.4 g	16%
<b>Fibre</b>	0.6 g		1.8 g	
<b>Protein</b>	0.8 g	2%	2.4 g	5%
<b>Salt</b>	0.5 g	8%	1.5 g	25%
<b>Sodium</b>	200 mg		600 mg	
<b>Serving Size</b>	300 g			

SUPPLEMENTARY  
NUTRITIONAL  
INFORMATION

HANDLING &  
STORAGE  
INFORMATION

**Directions For Use**

Cooking Instructions HOB: Empty the soup into a pan and stir gently while heating. Do not boil. MICROWAVE: (850W: Microwave ovens may vary, the instructions are a guide. Empty the soup into a microwaveable dish and cover. Heat on full power for 1 minute. Stir, then heat for a further 1 minute. Check that soup is hot before serving, and enjoy!

**Storage Instructions**

Empty any unused soup into a covered, non-metallic container and put in the fridge. Eat within 2 days.

<b>Shelf Life from Time of Production</b>	480 Days	<b>Exempt From Shelf Life Labelling</b>	No
---	----------	---	----

ACCREDITATIONS/  
CERTIFICATIONS/  
ASSURANCE  
SCHEMES  
ORIGIN

**BRCGS Certified**

**Product Country of Origin/Place of** United Kingdom

**Provenance**

**Additional Origin Details**

n/a

PRODUCT CHARACTERISTICS CONFIGURATION

Standards Testing

Case Configuration

Inner Pack Configuration

**Total Quantity of Inner Components in Outer Case** 12 Units

**Is the Outer Case Splittable?** No

PRODUCT WEIGHTS

Inner Component

**Variable Weight Consumer Item** No

**Inner Component Weight** 300 g

Outer Case

**Outer Case Gross Weight** 4.2 kg

**Outer Case Net Weight** 3.6 kg

PRODUCT DIMENSIONS

Inner Component

**Inner Component Depth** 67 mm

**Inner Component Width** 67 mm

**Inner Component Height** 101 mm

Outer Case

**Outer Case Depth** 280 mm

**Outer Case Width** 200 mm

**Outer Case Height** 105 mm

PALLET INFORMATION

**Quantity of Cases Per Pallet Layer** 18 Cases

**Pallet Height** 1.5 MTR

**Quantity of Layers Per Pallet** 13 Layers

**Quantity of Cases Per Pallet** 234 Cases

PACKAGING

Inner Component Packaging

Type	Materials	Weight	Recycled Plastic %	Recyclable	Returnable	Composite
Can	Paper/Cardboard	1.58 g	- %			
Can	Steel	44.2 g	- %			

Outer Case Packaging

Type	Materials	Weight	Recycled Plastic %	Recyclable	Returnable	Composite
Case	Plastic	1.13 g	- %			
Case	Paper/Cardboard	3.45 g	- %			

Transport Packaging

Type	Materials	Weight	Recycled Plastic %	Recyclable	Returnable	Composite
Other	Plastic	17 g	- %			
Other	Paper/Cardboard	80 g	- %			
Other	Wood	28000 g	- %			

OTHER INFORMATION

CONTACT  
INFORMATION

Address

H.J. Heinz  
The Shard  
32 London Bridge Street  
London  
SE1 9SG  
England

P: (Phone) 02037 650500

The information on the [Erudus System](#) has been supplied by the manufacturers of the products and, whilst the owners of the Erudus System take steps to ensure the information is regularly updated, they give no warranty and no guarantee that the information is accurate. Product information and ingredients may change, please always read product labels carefully in addition to using the information provided by Erudus.

We do not accept liability for any inaccuracies or incorrect information contained on this site.  
Please visit <http://www.erudus.com/terms-and-conditions> for full terms and conditions.