

Changed Feb 19, 2024 11:54

Reviewed Feb 19, 2024 11:54

Erudus ID d08642570ec84d50a49230ffaeb133e9

Version 2.0

28044

Heinz Salad Cream Original 2.15L

Salad Cream

PRODUCT DESCRIPTION

Heinz Salad Cream Original 2.15L

| | |
|---------------------------|----------------------------------|
| Brand | H.J. Heinz |
| Manufacturer Product Code | 76013779 |
| Product Type | Food |
| Product Category | Condiments |
| Storage Type | Ambient |
| Erudus ID | d08642570ec84d50a49230ffaeb133e9 |
| Specification Type | Generic |
| Inner Component GTIN | 5000157024350 |
| Outer Case GTIN | 5000157054265 |



INGREDIENTS

Ingredient Declaration

Spirit Vinegar, Water, Rapeseed Oil (22%), Sugar, Cornflour, MUSTARD, Pasteurised EGG Yolks (3%), Salt, Colour - Riboflavin

ALLERGENS

Product Contains:

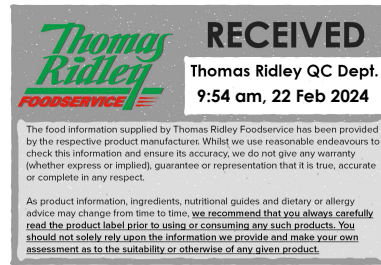
| | | | |
|---|-----|--------------------------------------|-----|
| Celery/Celeriac | No | Mustard | Yes |
| Cereals Containing Gluten | No | Nuts (Tree) | No |
| Barley | No | Almond nuts | No |
| Oats | No | Brazil nuts | No |
| Rye | No | Cashew nuts | No |
| Wheat (including Spelt and Khorasan) | No | Hazelnuts | No |
| Crustacea | No | Macadamia (Queensland) nuts | No |
| Eggs | Yes | Pecan nuts | No |
| Fish | No | Pistachio nuts | No |
| Lupin | No | Walnuts | No |
| Milk | No | Peanuts | No |
| Molluscs | No | Sesame Seeds | No |
| | | Soybeans | No |
| | | Sulphur Dioxide and Sulphites | No |

FREE FROM CLAIMS

| | |
|--------------------|-----|
| Gluten-Free | Yes |
|--------------------|-----|

SUPPLEMENTARY INGREDIENT INFORMATION

| | |
|---------------------------------------|----|
| Palm Oil | No |
| Hydrogenated Vegetable Oil/Fat | No |
| GM Protein/DNA | No |



ADDITIVES

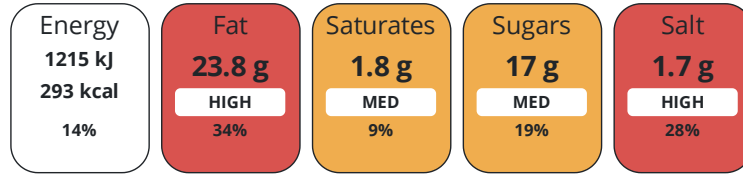
Product Contains:

| | | | |
|-------------------------------------|--------------|---------------------------------|--------------|
| Artificial Antioxidants | No | Artificial Flavourings | No |
| Artificial Colours | No | Artificial Preservatives | No |
| Artificial Flavour Enhancers | No | Artificial Sweeteners | No |
| Vegan Diet | No | Vegetarian Diet | Suitable for |
| Halal Diet | Suitable for | Kosher Diet | Suitable for |

DIET
SUITABILITY

NUTRITIONAL
INFORMATION

Each 100g/ml portion contains:



of your reference intake.

Typical values per 100g/ml : Energy 293kcal / 1215kj

| Nutrient | per 100g | RI per 100g |
|---------------------------|----------|-------------|
| Energy (kJ) | 1215 kJ | 14% |
| Energy (kcal) | 293 kcal | 15% |
| Fat | 23.8 g | 34% |
| of which Saturates | 1.8 g | 9% |
| Carbohydrate | 18.5 g | 7% |
| of which Sugars | 17 g | 19% |
| Protein | 1.3 g | 3% |
| Salt | 1.7 g | 28% |

SUPPLEMENTARY
NUTRITIONAL
INFORMATION

HANDLING &
STORAGE
INFORMATION

Directions For Use

SHAKE WELL BEFORE USE.

Storage Instructions

After opening refrigerate and eat within 8 weeks.

| | | | |
|---|----------|---|----|
| Shelf Life from Time of Production | 365 Days | Exempt From Shelf Life Labelling | No |
|---|----------|---|----|

ACCREDITATIONS/
CERTIFICATIONS/
ASSURANCE
SCHEMES



ORIGIN

Product Country of Origin/Place of Netherlands (the)

Provenance

Additional Origin Details

Confidential

PRODUCT
CHARACTERISTICS

Standards Testing

| | | | |
|--|----|--|----|
| Do you undertake trend analysis of microbiological results? | No | Is shelf life testing undertaken? | No |
|--|----|--|----|

| | | | |
|---------------------------------------|---|--------------------------|-------------------------------|
| CONFIGURATION | Case Configuration | Inner Pack Configuration | |
| | Total Quantity of Inner Components in Outer Case | 2 Units | |
| PRODUCT WEIGHTS | Inner Component | | |
| | Variable Weight Consumer Item | Yes | |
| | Inner Component Volume | 2.5 litre | |
| | Outer Case | | |
| | Outer Case Gross Weight | 4.62 kg | |
| | Outer Case Net Weight | 4.4 kg | |
| PRODUCT DIMENSIONS | Inner Component | | |
| | Inner Component Depth | 140 mm | |
| | Inner Component Width | 100 mm | |
| | Inner Component Height | 238 mm | |
| | Outer Case | | |
| | Outer Case Depth | 202 mm | |
| | Outer Case Width | 141 mm | |
| | Outer Case Height | 240 mm | |
| PALLET INFORMATION | Quantity of Cases Per Pallet Layer | 42 Cases | Pallet Height 1.37 MTR |
| | Quantity of Layers Per Pallet | 5 Layers | |
| | Quantity of Cases Per Pallet | 210 Cases | |
| OTHER INFORMATION CONTACT INFORMATION | Address | | |
| | H.J. Heinz | | |
| | The Shard | | |
| | 32 London Bridge Street | | |
| | London | | |
| | SE1 9SG | | |
| England | | | |
| | Phone | 02037 650500 | |

The information on the [Erudus System](#) has been supplied by the manufacturers of the products and, whilst the owners of the Erudus System take steps to ensure the information is regularly updated, they give no warranty and no guarantee that the information is accurate. Product information and ingredients may change, please always read product labels carefully in addition to using the information provided by Erudus.

We do not accept liability for any inaccuracies or incorrect information contained on this site. Please visit <http://www.erudus.com/terms-and-conditions> for full terms and conditions.