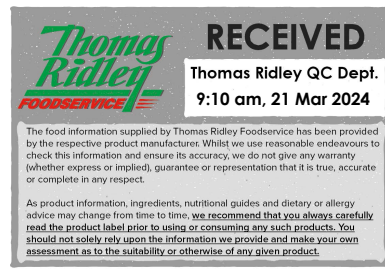


Changed Mar 20, 2024 11:52

Reviewed Mar 20, 2024 11:52

Erudus ID 8124bbe7157c4db8b54736dd141214a7

Version 3.0



28122

# MINI BRIOCHE SLIDER

Mini Brioche Slider 60x30g

## PRODUCT DESCRIPTION

Frozen, fully-baked mini rich sweet moulded bread piece.

Brand	Speciality Breads Ltd
Manufacturer Product Code	FB760
Product Type	Food
Product Category	Bread Buns & Rolls
Storage Type	Frozen
Erudus ID	8124bbe7157c4db8b54736dd141214a7
Specification Type	Bakery Products



Outer Case GTIN 5032633157603



## INGREDIENTS

### Ingredient Declaration

WHEAT flour (flour (WHEAT flour, calcium, iron, niacin, thiamin)), Water, Concentrated Butter (from MILK), Sugar, EGG (free range EGG powder, anticaking agent E341), Yeast, Salt (Salt, anti-caking agent (sodium ferrocyanide: E535)), Skimmed MILK Powder, Bread Improver (WHEAT flour (with calcium, iron, niacin, thiamin), Enzymes: xylanase, alpha amylase, glucose oxidase, flour treatment agent: ascorbic acid)), Ground turmeric, Glaze (skimmed MILK, water, rapeseed oil, MILK protein, modified starch E1442 (maize), emulsifier E471 (from palm oil), stabilizer E407, acidity regulator E339, colour E160a).

## ALLERGENS

Product Contains:

<b>Celery/Celery</b>	No	<b>Mustard</b>	No
<b>Cereals Containing Gluten</b>	Yes	<b>Nuts (Tree)</b>	No
<b>Barley</b>	May Contain	<b>Almond nuts</b>	No
<b>Oats</b>	No	<b>Brazil nuts</b>	No
<b>Rye</b>	May Contain	<b>Cashew nuts</b>	No
<b>Wheat (including Spelt and Khorasan)</b>	Yes	<b>Hazelnuts</b>	No
<b>Crustacea</b>	No	<b>Macadamia (Queensland) nuts</b>	No
<b>Eggs</b>	Yes	<b>Pecan nuts</b>	No
<b>Fish</b>	No	<b>Pistachio nuts</b>	No
<b>Lupin</b>	No	<b>Walnuts</b>	No
<b>Milk</b>	Yes	<b>Peanuts</b>	No
<b>Molluscs</b>	No	<b>Sesame Seeds</b>	No
		<b>Soybeans</b>	No
		<b>Sulphur Dioxide and Sulphites</b>	No

Risk Source:

## SUPPLEMENTARY INGREDIENT INFORMATION

<b>Palm Oil</b>	Yes
<b>Hydrogenated Vegetable Oil/Fat</b>	No
<b>GM Protein/DNA</b>	No

ADDITIVES

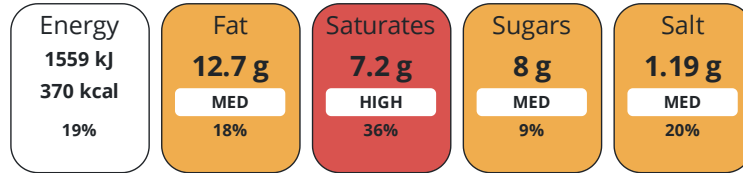
Product Contains:

<b>Artificial Antioxidants</b>	No	<b>Artificial Flavourings</b>	No
<b>Artificial Colours</b>	No	<b>Artificial Preservatives</b>	No
<b>Artificial Flavour Enhancers</b>	No	<b>Artificial Sweeteners</b>	No
<b>Vegan Diet</b>	No	<b>Vegetarian Diet</b>	Suitable for
<b>Halal Diet</b>	No	<b>Kosher Diet</b>	No

DIET  
SUITABILITY

NUTRITIONAL  
INFORMATION

Each 100g/ml portion contains:



of your reference intake.

Typical values per 100g/ml : Energy 370kcal / 1559kJ

Nutrient	per 100g	RI per 100g
<b>Energy (kJ)</b>	1559.3 kJ	19%
<b>Energy (kcal)</b>	369.9 kcal	18%
<b>Fat</b>	12.7 g	18%
of which Saturates	7.2 g	36%
of which Mono-unsaturates	3.6 g	
of which Polyunsaturates	0.7 g	
<b>Carbohydrate</b>	49.8 g	19%
of which Sugars	8 g	9%
of which Starch	0 g	
<b>Fibre</b>	2.2 g	
<b>Protein</b>	10.7 g	21%
<b>Salt</b>	1.19 g	20%
<b>Sodium</b>	470 mg	

VITAMINS AND  
MINERALS

Nutrient	per 100g	RI per 100g
<b>Vitamin C</b>	0 mg	0%
<b>Folate/Folic Acid</b>	0 µg	0%
<b>Calcium</b>	0.77 mg	0%
<b>Iron</b>	0 mg	0%
<b>Zinc</b>	0 mg	0%

SUPPLEMENTARY  
NUTRITIONAL  
INFORMATION

<b>Cholesterol per 100 g/ml (UK/FR)</b>	0 g
<b>Trans Fats per 100 g/ml</b>	0.5 g

HFSS (HIGH IN  
FAT, SALT AND  
SUGAR)

<b>HFSS Status</b>	Yes
--------------------	-----

HANDLING &  
STORAGE  
INFORMATION

**Directions For Use**

FULLY BAKED. DEFROST INSIDE FOOD-SAFE PLASTIC BAG AT ROOM TEMPERATURE UNTIL COMPLETELY THAWED

**Storage Instructions**

FROZEN. STORE AT -18°C. DO NOT RE-FREEZE.

<b>Shelf Life from Time of Production</b>	365 Days	<b>Exempt From Shelf Life Labelling</b>	No
---	----------	---	----

ACCREDITATIONS/  
CERTIFICATIONS/  
ASSURANCE  
SCHEMES  
ORIGIN

<b>BRCGS Certified</b>	<b>Red Tractor</b>
------------------------	--------------------

<b>Roundtable of Sustainable Palm Oil (RSPO)</b>
--

<b>Product Country of Origin/Place of</b>	United Kingdom
---	----------------

**Provenance**

**Additional Origin Details**

n/a

PRODUCT  
CHARACTERISTICS

Standards Testing

<b>Do you undertake trend analysis of microbiological results?</b>	Yes	<b>Is shelf life testing undertaken?</b>	Yes
--	-----	--	-----

CONFIGURATION

Case Configuration

Inner Pack Configuration

<b>Total Quantity of Inner Components in</b>	60 Units
--	----------

**Outer Case**

<b>Is the Outer Case Splittable?</b>	No
--------------------------------------	----

PRODUCT  
WEIGHTS

Inner Component

<b>Variable Weight Consumer Item</b>	No
--------------------------------------	----

<b>Inner Component Weight</b>	30 g
-------------------------------	------

<b>Net Drained Weight</b>	0 g
---------------------------	-----

Outer Case

<b>Outer Case Gross Weight</b>	2.05 kg
--------------------------------	---------

<b>Outer Case Net Weight</b>	0.25 kg
------------------------------	---------

PRODUCT  
DIMENSIONS

Inner Component

<b>Inner Component Depth</b>	300 mm
------------------------------	--------

<b>Inner Component Width</b>	230 mm
------------------------------	--------

<b>Inner Component Height</b>	232 mm
-------------------------------	--------

Outer Case

<b>Outer Case Depth</b>	233 mm
-------------------------	--------

<b>Outer Case Width</b>	303 mm
-------------------------	--------

<b>Outer Case Height</b>	239 mm
--------------------------	--------

PALLET  
INFORMATION

<b>Quantity of Cases Per Pallet Layer</b>	16 Cases	<b>Pallet Height</b>	1.85 MTR
---	----------	----------------------	----------

<b>Quantity of Layers Per Pallet</b>	7 Layers	<b>Pallet Gross Weight</b>	241.12 kg
--------------------------------------	----------	----------------------------	-----------

<b>Quantity of Cases Per Pallet</b>	112 Cases
-------------------------------------	-----------

PACKAGING

Inner Component Packaging

Type	Materials	Weight	Recycled Plastic %	Recyclable	Returnable	Composite
Bag	Plastic	26 g	- %			

Outer Case Packaging

Type	Materials	Weight	Recycled Plastic %	Recyclable	Returnable	Composite
Case	Paper/Cardboard	231 g	- %			

Transport Packaging

Type	Materials	Weight	Recycled Plastic %	Recyclable	Returnable	Composite
Other	Plastic	525 g	- %		Yes	
Other	Paper/Cardboard	110 g	- %		Yes	

OTHER INFORMATION

<b>Intrastat/Taric Code</b>	1905
-----------------------------	------

CONTACT INFORMATION

Address  
 Speciality Breads Ltd  
 Unit J2 Channel Road  
 Westwood Industrial Estate  
 Margate  
 Kent  
 CT9 4JS  
 England

P: (Phone) 01843 209442

The information on the [Erudus System](#) has been supplied by the manufacturers of the products and, whilst the owners of the Erudus System take steps to ensure the information is regularly updated, they give no warranty and no guarantee that the information is accurate. Product information and ingredients may change, please always read product labels carefully in addition to using the information provided by Erudus.

We do not accept liability for any inaccuracies or incorrect information contained on this site.  
 Please visit <http://www.erudus.com/terms-and-conditions> for full terms and conditions.