

## Cadbury Dairy Milk Caramel Chocolate Bar 45g



### EAN

7622300743703

### Target market(s)

GB, IE

## Components

### Ingredients

#### Milk\*\*

Sugar

Glucose Syrup

Cocoa Butter

Vegetable Fats (Palm, Shea)

Glucose-Fructose Syrup

Cocoa Mass

Whey Powder (from **Milk**)

Emulsifiers (E442, E471, E476)

Salt

Flavourings

Sodium Carbonates

\*\*The equivalent of 426 ml of Fresh Liquid Milk in every 227 g of Milk Chocolate

Milk Chocolate: Milk Solids 20 % minimum, actual 23 %

Contains Vegetable Fats in addition to Cocoa Butter

### Allergy Text

**May contain Nuts, Wheat.**

### Nutrition

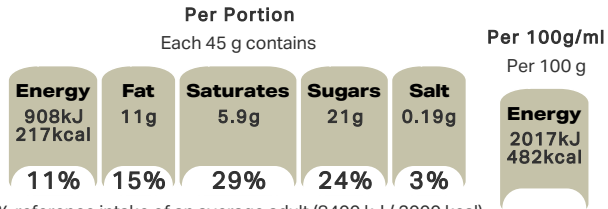
	Per 100 g	Per Bar (45 g)	*Reference Intakes
Energy	2017 kJ	908 kJ	8400 kJ /
	482 kcal	217 kcal	2000 kcal
Fat	23 g	11 g	70 g
of which Saturates	13 g	5.9 g	20 g
Carbohydrate	62 g	28 g	260 g
of which Sugars	48 g	21 g	90 g
Fibre	1.3 g	0.6 g	-
Protein	4.7 g	2.1 g	50 g
Salt	0.41 g	0.19 g	6 g

\*% reference intake of an average adult (8400 kJ / 2000 kcal)

### Calculated Nutrition

	per 100g	Per Bar (45 g)
Energy (kJ)	2017	908
Energy (kcal)	482	217
Fat (g)	23	11
of which saturates (g)	13	5.9
Carbohydrate (g)	62	28
of which sugars (g)	48	21
Fibre (g)	1.3	0.6
Protein (g)	4.7	2.1
Salt (g)	0.41	0.19

#### Front of Pack Nutrition



% reference intake of an average adult (8400 kJ / 2000 kcal)

#### Nutrition Other Text

% reference intake of an average adult (8400 kJ / 2000 kcal)

#### Reference Intake Statement

Reference Intake Statement - % reference intake of an average adult (8400 kJ / 2000 kcal)

## Product Description

#### Alternative Description

Supplier Preferred Product Name - Cadbury Dairy Milk Caramel Chocolate Bar 45g

#### Brand

Cadbury

#### Features

100% Sustainably Sourced Cocoa  
Suitable for vegetarians

#### Standardised Brand

Brand - Cadbury

#### Regulated Product Name

Milk chocolate with caramel centre (40 %).

## Marketing

### Company Name

Mondelez UK / Mondelez Ireland

### Company Address

Mondelez UK,  
PO Box 7008,  
Birmingham,  
B30 2PT.

Mondelez Ireland,  
Malahide Road,  
Coolock,  
Dublin 5.

### Product Marketing

Chunks of classic, creamy Cadbury Dairy Milk chocolate, encasing a smooth, golden caramel centre. It brings a velvety decadence to your everyday. Made with sustainably sourced cocoa. Vegetarian friendly.

### Manufacturer Marketing

By Appointment to H.M. The Queen Cocoa and Chocolate Manufacturers Cadbury UK Ltd., Bournville.

### Other Information

Made under licence from Cadbury UK Ltd.

### Further Description

BeTreatwise.net

Cocoa Life  
Partnering with Fairtrade Foundation  
[www.cocoalife.org](http://www.cocoalife.org)

## Health & Lifestyle

### Lifestyle

- Suitable for Vegetarians

### Allergy Advice

Milk - Contains  
Nuts - May Contain  
Wheat - May Contain

## Storage & Usage

### Storage Type

Type
Ambient

### Storage

Store in a dry place. Protect from heat.

## Brandbank Captured Pack Data

### Pack Size

45g e

### Numeric Size

Numeric Size - 45

### Pack Type

Type - Wrap

### Recycling Other Text

### Usage Count

Number of uses - Servings

1

### Usage Other Text

1x Bar = 1 Portion. 1 portion (45 g) per pack

## Customer Services

### Manufacturers Address

Mondelez UK,  
PO Box 7008,  
Birmingham,  
B30 2PT.

Mondelez Ireland,  
Malahide Road,  
Coolock,  
Dublin 5.

### Return To

We are passionate about our great quality Cadbury products. Not completely satisfied? Please contact us:

Freephone 0800 818181 (UK only)

Mondelez UK,  
PO Box 7008,  
Birmingham,  
B30 2PT.

Mondelez Ireland,  
Freephone 1-800 678708  
Malahide Road,  
Coolock,  
Dublin 5.  
[www.cadbury.co.uk](http://www.cadbury.co.uk)

### Telephone Helpline

0800 818181 (UK)  
1-800 678708

### Fax Number

### Email Helpline

### Web Address

[www.cadbury.co.uk](http://www.cadbury.co.uk)

## Extended Data

### SEO Metatag

Caramel, Cadbury Caramel, Dairy Milk Caramel, Chocolate Caramel, Is Cadburys Caramel Gluten Free, Dairy Milk, Milk Chocolate, Milk Chocolate With Caramel Centre