

Changed Apr 30, 2024 13:55
Reviewed Apr 30, 2024 13:55
Erudus ID 46f70cbd62614399abb372f6bfccd8fe
Version 3.0

Thomas Ridley
FOODSERVICE

RECEIVED
Thomas Ridley QC Dept.
4:30 pm, 30 Apr 2024

The food information supplied by Thomas Ridley Foodservice has been provided by the respective product manufacturer. Whilst we use reasonable endeavours to check this information and ensure its accuracy, we do not give any warranty (whether express or implied), guarantee or representation that it is true, accurate or complete in any respect.

As product information, ingredients, nutritional guides and dietary or allergy advice may change from time to time, we recommend that you always carefully read the product label prior to using or consuming any such products. You should not solely rely upon the information we provide and make your own assessment as to the suitability or otherwise of any given product.



28164

Whitby Seafoods Extra Large Scampi 10*450g

Whitby Seafoods XI Scampi 10x450g

PRODUCT DESCRIPTION

Whole scampi (langoustine) tails in a crisp, golden crumb. Contains one or more tails per piece and added water.

Brand	Whitby Seafoods Ltd
Manufacturer Product Code	1605
Product Type	Food
Product Category	Prawns, Shrimp & Scampi
Storage Type	Frozen
Erudus ID	46f70cbd62614399abb372f6bfccd8fe
Specification Type	Fish and Seafood



Inner Component GTIN	5016316016050
Outer Case GTIN	05016316916053



INGREDIENTS

Ingredient Declaration

Scampi (**CRUSTACEANS**) (40%), Breadcrumbs (**WHEAT** Flour (**WHEAT** Flour, Calcium Carbonate, Iron, Niacin, Thiamin), Salt, Yeast, Rapeseed oil), Batter (Water, **WHEAT** Flour (**WHEAT** Flour, Calcium Carbonate, Iron, Niacin, Thiamin), Salt), Water, Stabilisers: E450, E451, E452.

ALLERGENS

Product Contains:

Celery/Celeriac	No
Cereals Containing Gluten	Yes
Barley	No
Oats	No
Rye	No
Wheat (including Spelt and Khorasan)	Yes
Crustacea	Yes
Eggs	No
Fish	May Contain
Lupin	No
Milk	No
Molluscs	May Contain
Mustard	No
Nuts (Tree)	No
Almond nuts	No
Brazil nuts	No
Cashew nuts	No
Hazelnuts	No
Macadamia (Queensland) nuts	No
Pecan nuts	No
Pistachio nuts	No
Walnuts	No
Peanuts	No
Sesame Seeds	No
Soybeans	No
Sulphur Dioxide and Sulphites	No

Risk Source:

Fish (Risk Source)	Factory
Molluscs (Risk Source)	Factory

Allergen Statement On Pack

For allergens including cereals containing GLUTEN please see ingredients in BOLD. May also contain FISH and MOLLUSCS

Additional Allergen Information

For allergens including cereals containing GLUTEN please see ingredients in BOLD. May also contain FISH and MOLLUSCS

SUPPLEMENTARY INGREDIENT INFORMATION

Palm Oil	No
Hydrogenated Vegetable Oil/Fat	No
GM Protein/DNA	No

ADDITIVES

Product Contains:

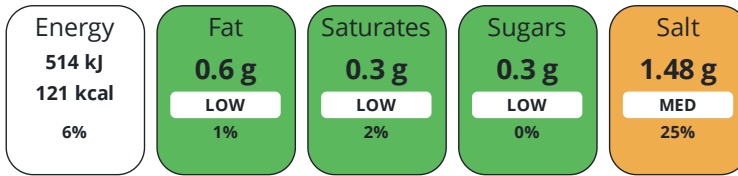
Artificial Antioxidants	No
Artificial Colours	No
Artificial Flavour Enhancers	No
Artificial Flavourings	No
Artificial Preservatives	No
Artificial Sweeteners	No

DIET SUITABILITY

Halal Diet	No	Kosher Diet	No
-------------------	----	--------------------	----

NUTRITIONAL INFORMATION

Each 100g/ml portion contains:



of your reference intake.

Typical values per 100g/ml : Energy 121kcal / 514kJ

Nutrient	per 100g	RI per 100g
Energy (kJ)	514 kJ	6%
Energy (kcal)	121 kcal	6%
Fat	0.6 g	1%
of which Saturates	0.3 g	2%
Carbohydrate	20 g	8%
of which Sugars	0.3 g	0%
Fibre	1.7 g	
Protein	9.4 g	19%
Salt	1.48 g	25%

Source of Nutritional Information Manufacturers analysis

SUPPLEMENTARY NUTRITIONAL INFORMATION

HANDLING & STORAGE INFORMATION

Directions For Use

Always cook from frozen. The instructions below are just a guide; do make sure our scampi is piping hot throughout before serving. Once cooled do not reheat. Deep fry: 5 mins Deep fry from frozen. Preheat the oil to 180°C/350°F. Cook for approximately 5 mins until crisp and golden.

Storage Instructions

Keep in the freezer at -18°C or colder and use by the best before date. Once defrosted please don't refreeze

Shelf Life from Time of Production 547 Days

Exempt From Shelf Life Labelling No

ACCREDITATIONS/ CERTIFICATIONS/ ASSURANCE SCHEMES

BRCGS Certified

Other Accreditation

ORIGIN

Product Country of Origin/Place of United Kingdom

Provenance

Additional Origin Details

Scampi: Approved suppliers sourced from North Sea / Irish Sea. Breadcrumbs: Newlyweds Water: Whitby Seafoods Filtered Borehole Water Batter: Newlyweds

Catch Zone 27 - Atlantic, Northeast

PRODUCT CHARACTERISTICS

Standards Testing

Do you undertake trend analysis of microbiological results? Yes

Is shelf life testing undertaken? Yes

Microbiological Standards

Organism	Description	Frequency	Target	Maximum	Sample (g or ml)
E. Coli (cfu/g or ml)		Annually	<10	10	1

Organism	Description	Frequency	Target	Maximum	Sample (g or ml)
Salmonella (cfu/g or ml)		Annually	<0	0	25
Coagulase-positive Staphylococci (cfu/g or ml)		Annually	<10	100	1

HAZARD CONTROLS

Metal Detection	Yes
------------------------	-----

CONFIGURATION

Case Configuration

Variable Inner Components in Outer Case	No
--	----

Total Quantity of Inner Components in Outer Case	10 Units
---	----------

Is the Outer Case Splittable?	No
--------------------------------------	----

Inner Pack Configuration

PRODUCT WEIGHTS

Inner Component

Variable Weight Consumer Item	No
--------------------------------------	----

Inner Component Weight	450 g
-------------------------------	-------

Outer Case

Outer Case Gross Weight	4.74 kg
--------------------------------	---------

Outer Case Net Weight	4.5 kg
------------------------------	--------

PRODUCT DIMENSIONS

Inner Component

Inner Component Depth	190 mm
------------------------------	--------

Inner Component Width	280 mm
------------------------------	--------

Inner Component Height	30 mm
-------------------------------	-------

Outer Case

Outer Case Depth	233 mm
-------------------------	--------

Outer Case Width	323 mm
-------------------------	--------

Outer Case Height	146 mm
--------------------------	--------

PALLET INFORMATION

Quantity of Cases Per Pallet Layer	15 Cases
---	----------

Quantity of Layers Per Pallet	10 Layers
--------------------------------------	-----------

Quantity of Cases Per Pallet	150 Cases
-------------------------------------	-----------

Pallet Height	1.46 MTR
----------------------	----------

Pallet Gross Weight	739.9 kg
----------------------------	----------

PACKAGING

Inner Component Packaging

Type	Materials	Weight	Recycled Plastic %	Recyclable	Returnable	Composite
Bag	Plastic	8 g	- %			

Outer Case Packaging

Type	Materials	Weight	Recycled Plastic %	Recyclable	Returnable	Composite
Case	Paper/Cardboard	105 g	- %			

Transport Packaging

Type	Materials	Weight	Recycled Plastic %	Recyclable	Returnable	Composite
Other	Plastic	350 g	- %		Yes	
Other	Wood	28000 g	- %		Yes	

OTHER INFORMATION

Intrastat/Taric Code

1605400020

Identification/Health Marks

GB YK 006

Manufacturer Comments

Amount in Bag: 18 (+/- 2)

CONTACT INFORMATION

Address

Whitby Seafoods Ltd

Fairfield way

Whitby Business park

Whitby

North Yorkshire

YO22 4PU

England

P. (Phone) 01947 829193

Complaints Contact

Neve Saltmarsh

Technical Services Coordinator

neve.saltmarsh@whitby-seafoods.com

The information on the [Erudus System](#) has been supplied by the manufacturers of the products and, whilst the owners of the Erudus System take steps to ensure the information is regularly updated, they give no warranty and no guarantee that the information is accurate. Product information and ingredients may change, please always read product labels carefully in addition to using the information provided by Erudus.

We do not accept liability for any inaccuracies or incorrect information contained on this site.
Please visit <http://www.erudus.com/terms-and-conditions> for full terms and conditions.