

Changed Aug 19, 2024 07:37

Reviewed Aug 19, 2024 07:37

Erudus ID c61e36d45f374322a27f5a4f12079bf0

Version 3.0

Thomas Ridley QC Dept.
9:05 am, 27 Aug 2024

The food information supplied by Thomas Ridley Foodservice has been provided by the respective product manufacturer. Whilst we use reasonable endeavours to check this information and ensure its accuracy, we do not give any warranty (whether express or implied), guarantee or representation that it is true, accurate or complete in any respect.

As product information, ingredients, nutritional guides and dietary or allergy advice may change from time to time, we recommend that you always carefully read the product label prior to using or consuming any such products. You should not solely rely upon the information we provide and make your own assessment as to the suitability or otherwise of any given product.



29016

Raspberry Preserve 72x28g

Raspberry 72x28g

PRODUCT DESCRIPTION

Raspberry Preserve

Brand	Wilkin and Sons Ltd (Tiptree)
Manufacturer Product Code	13050
Product Type	Food
Product Category	Preserves and Spreads
Storage Type	Ambient
Erudus ID	c61e36d45f374322a27f5a4f12079bf0
Specification Type	Generic



Inner Component GTIN	96119181
Outer Case GTIN	00043647130501



INGREDIENTS

Ingredient Declaration

Sugar, Raspberries, Gelling Agent, Citrus Pectin, Acidity Regulator, Sodium Citrate

ALLERGENS

Product Contains:

Celery/Celeriac	No	Mustard	No
Cereals Containing Gluten	No	Nuts (Tree)	No
Barley	No	Almond nuts	No
Oats	No	Brazil nuts	No
Rye	No	Cashew nuts	No
Wheat (including Spelt and Khorasan)	No	Hazelnuts	No
Crustacea	No	Macadamia (Queensland) nuts	No
Eggs	No	Pecan nuts	No
Fish	No	Pistachio nuts	No
Lupin	No	Walnuts	No
Milk	No	Peanuts	No
Molluscs	No	Sesame Seeds	No
		Soybeans	No
		Sulphur Dioxide and Sulphites	No

SUPPLEMENTARY INGREDIENT INFORMATION

Palm Oil	No
Hydrogenated Vegetable Oil/Fat	No
GM Protein/DNA	No

ADDITIVES

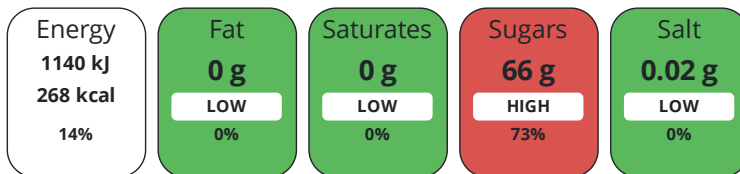
Product Contains:

Artificial Antioxidants	No	Artificial Flavourings	No
Artificial Colours	No	Artificial Preservatives	No
Artificial Flavour Enhancers	No	Artificial Sweeteners	No
Vegan Diet	Suitable for	Vegetarian Diet	Suitable for
Halal Diet	No	Kosher Diet	Suitable for

DIET SUITABILITY

NUTRITIONAL INFORMATION

Each 100g/ml portion contains:



of your reference intake.

Typical values per 100g/ml : Energy 268kcal / 1140kJ

Nutrient	per 100g	RI per 100g	per 14g serving	RI per 14g serving
Energy (kJ)	1140 kJ	14%	159.6 kJ	2%
Energy (kcal)	268 kcal	13%	37.5 kcal	2%
Fat	0 g	0%	-	
of which Saturates	0 g	0%	-	
Carbohydrate	66 g	25%	9.2 g	4%
of which Sugars	66 g	73%	9.2 g	10%
Fibre	1.3 g		0.2 g	
Protein	0.7 g	1%	0.1 g	0%
Salt	0.02 g	0%	-	

Serving Size 14 g

VITAMINS AND MINERALS

Nutrient	per 100g	RI per 100g	per 14g serving	RI per 14g serving
Vitamin A	0 µg	0%	-	
Vitamin C	0 mg	0%	-	
Folate/Folic Acid	0 µg	0%	-	
Calcium	6 mg	1%	0.8 mg	0%
Iron	0.1 mg	1%	-	
Zinc	0.1 mg	1%	-	

SUPPLEMENTARY NUTRITIONAL INFORMATION

Cholesterol per 100 g/ml (UK/FR) 0 g

HANDLING & STORAGE INFORMATION

Directions For Use

ready to eat

Storage Instructions

Store at ambient temperature

Shelf Life from Time of Production 1095 Days

ACCREDITATIONS/ CERTIFICATIONS/ ASSURANCE SCHEMES

BRCGS Certified

Other Accreditation

ORIGIN	Product Country of Origin/Place of Provenance		United Kingdom				
	Additional Origin Details						
PRODUCT CHARACTERISTICS	N/A						
	Standards Testing						
	Do you undertake trend analysis of microbiological results?		No	Is shelf life testing undertaken?		No	
	Analytical Standards						
CONFIGURATION	Case Configuration		Inner Pack Configuration				
	Total Quantity of Inner Components in Outer Case		72 Units				
	Is the Outer Case Splittable?		Yes				
	Inner Component						
PRODUCT WEIGHTS	Variable Weight Consumer Item		No				
	Inner Component Weight		28 g				
	Net Drained Weight		0 g				
	Outer Case						
	Outer Case Gross Weight		5.8 kg				
	Outer Case Net Weight		2 kg				
PRODUCT DIMENSIONS	Inner Component						
	Inner Component Depth		42 mm				
	Inner Component Width		42 mm				
	Inner Component Height		40 mm				
	Outer Case						
	Outer Case Depth		274 mm				
	Outer Case Width		184 mm				
	Outer Case Height		128 mm				
	PALLET INFORMATION	Quantity of Cases Per Pallet Layer		20 Cases	Pallet Type		UK Standard Pallet
		Quantity of Layers Per Pallet		6 Layers	Pallet Height		0.9 MTR
Quantity of Cases Per Pallet		120 Cases	Pallet Gross Weight		721 kg		
PACKAGING	Inner Component Packaging						
	Type	Materials	Weight	Recycled Plastic %	Recyclable	Returnable	Composite
	Jar	Paper/Cardboard	0.1 g	- %			
	Jar	Glass	45 g	- %			
	Jar	Steel	4 g	- %			
	Outer Case Packaging						
	Type	Materials	Weight	Recycled Plastic %	Recyclable	Returnable	Composite
	Paper/Polyethylene	Plastic	12 g	30.00 %			
	Paper/Polyethylene	Paper/Cardboard	88 g	- %			

Transport Packaging

Type	Materials	Weight	Recycled Plastic %	Recyclable	Returnable	Composite
Other	Plastic	450 g	- %			
Other	Paper/Cardboard	10 g	- %			
Other	Wood	25000 g	- %			

OTHER INFORMATION

Manufacturer Comments

N/A

CONTACT INFORMATION

Address

Wilkin and Sons Ltd (Tiptree)

Wilkin & Sons Ltd.

Factory Hill

Tiptree

Essex

CO5 0RF

United Kingdom

P: (Phone) 01621815407

The information on the [Erudus System](#) has been supplied by the manufacturers of the products and, whilst the owners of the Erudus System take steps to ensure the information is regularly updated, they give no warranty and no guarantee that the information is accurate. Product information and ingredients may change, please always read product labels carefully in addition to using the information provided by Erudus.

We do not accept liability for any inaccuracies or incorrect information contained on this site.
Please visit <http://www.erudus.com/terms-and-conditions> for full terms and conditions.