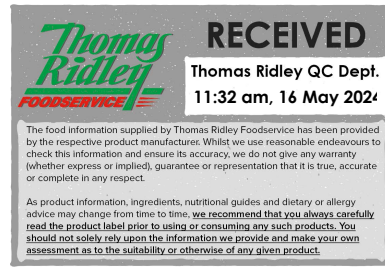


Changed May 16, 2024 09:57
Reviewed May 16, 2024 09:57
Erudus ID 91db00ce5bca4f009499740e434d538a
Version 2.0



29126

4x1ltrl Monin Mango puree

Mango Puree 4x1litre

PRODUCT DESCRIPTION

Mango puree

Brand	Bennett Opie Ltd
Manufacturer Product Code	H991
Product Type	Drink
Product Category	Juices and Cordials
Storage Type	Ambient
Erudus ID	91db00ce5bca4f009499740e434d538a
Specification Type	Drinks



Inner Component GTIN	3052910033149
Outer Case GTIN	3052910433147



INGREDIENTS

Ingredient Declaration

Sugar, concentrated mango puree, water, natural flavour, thickening agent (pectin), acidifying agent (citric acid), preservative agent (potassium sorbate), safflower extract.

Contains the equivalent of 50,1 % of Mango puree.

ALLERGENS

Product Contains:

Celery/Celeriac	No
Cereals Containing Gluten	No
Barley	No
Oats	No
Rye	No
Wheat (including Spelt and Khorasan)	No
Crustacea	No
Eggs	No
Fish	No
Lupin	No
Milk	No
Molluscs	No
Mustard	No
Nuts (Tree)	No
Almond nuts	No
Brazil nuts	No
Cashew nuts	No
Hazelnuts	No
Macadamia (Queensland) nuts	No
Pecan nuts	No
Pistachio nuts	No
Walnuts	No
Peanuts	No
Sesame Seeds	No
Soybeans	No
Sulphur Dioxide and Sulphites	No

SUPPLEMENTARY INGREDIENT INFORMATION

Palm Oil	No
Hydrogenated Vegetable Oil/Fat	No
GM Protein/DNA	No

ADDITIVES

Product Contains:

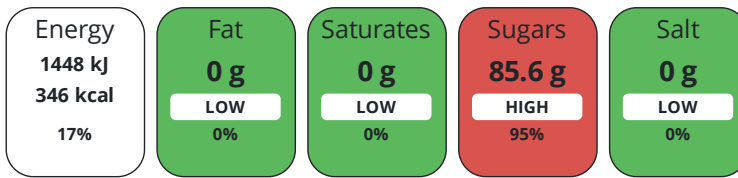
Artificial Antioxidants	No
Artificial Colours	No
Artificial Flavour Enhancers	No
Artificial Flavourings	No
Artificial Preservatives	Yes
Artificial Sweeteners	No

DIET SUITABILITY

Vegan Diet	Suitable for	Vegetarian Diet	Suitable for
Halal Diet	No	Kosher Diet	No

NUTRITIONAL INFORMATION

Each 100g/ml portion contains:



of your reference intake.

Typical values per 100g/ml : Energy 346kcal / 1448kj

Nutrient	per 100ml	RI per 100ml
Energy (kJ)	1448 kJ	17%
Energy (kcal)	346 kcal	17%
Fat	0 g	0%
of which Saturates	0 g	0%
Carbohydrate	85.6 g	33%
of which Sugars	85.6 g	95%
Fibre	0 g	
Protein	0.5 g	1%
Salt	0 g	0%
Serving Size		0 ml

SUPPLEMENTARY NUTRITIONAL INFORMATION

HANDLING & STORAGE INFORMATION

Directions For Use

multi use

Storage Instructions

ambient, chill after opening use within 4 weeks

Shelf Life from Time of Production

730 Days

Exempt From Shelf Life Labelling

No

ACCREDITATIONS/ CERTIFICATIONS/ ASSURANCE SCHEMES

BRCGS Certified

Other Accreditation

ORIGIN

Product Country of Origin/Place of

France

Provenance

Additional Origin Details

manufactured in France

PRODUCT CHARACTERISTICS

Standards Testing

CONFIGURATION

Case Configuration

Total Quantity of Inner Components in Outer Case

4 Units

Is the Outer Case Splittable?

Yes

Inner Pack Configuration

PRODUCT WEIGHTS

Inner Component

Inner Component Volume	1 litre
Outer Case	
Outer Case Gross Weight	4.7 kg
Outer Case Net Weight	4 kg

PRODUCT DIMENSIONS

Inner Component

Inner Component Depth	73 mm
Inner Component Width	73 mm
Inner Component Height	295 mm

Outer Case

Outer Case Depth	195 mm
Outer Case Width	195 mm
Outer Case Height	330 mm

PALLET INFORMATION

Quantity of Cases Per Pallet Layer	30 Cases
Quantity of Layers Per Pallet	4 Layers
Quantity of Cases Per Pallet	120 Cases
Pallet Height	1.5 MTR
Pallet Gross Weight	601 kg

PACKAGING

Inner Component Packaging

Type	Materials	Weight	Recycled Plastic %	Recyclable	Returnable	Composite
Bottle	Plastic	266.16 g	- %			
Bottle	Paper/Cardboard	4 g	- %			

Outer Case Packaging

Type	Materials	Weight	Recycled Plastic %	Recyclable	Returnable	Composite
Case	Paper/Cardboard	245 g	- %			

Transport Packaging

Type	Materials	Weight	Recycled Plastic %	Recyclable	Returnable	Composite
Other	Plastic	300 g	- %			
Other	Wood	30000 g	- %			

OTHER INFORMATION

Commodity Code	2106905999
-----------------------	------------

Manufacturer Comments

mango puree

CONTACT INFORMATION

Address

Bennett Opie Ltd
Wentworth Court
Sittingbourne
Kent
ME10 3RN
England

P: (Phone) 01795 476154

Technical Contact

Milena Gradowska
Technical Manager
milena.gradowska@b-opie.com

P: (Phone) 01795413737

Complaints Contact

Milena Gradowska
Technical Manager
milena.gradowska@b-opie.com

P: (Phone) 01795413734

Commercial Contact

Paul Fox
Commercial Director
paul.fox@b-opie.com

P: (Phone) 01795413750

The information on the [Erudus System](#) has been supplied by the manufacturers of the products and, whilst the owners of the Erudus System take steps to ensure the information is regularly updated, they give no warranty and no guarantee that the information is accurate. Product information and ingredients may change, please always read product labels carefully in addition to using the information provided by Erudus.

We do not accept liability for any inaccuracies or incorrect information contained on this site.
Please visit <http://www.erudus.com/terms-and-conditions> for full terms and conditions.