

Thomas Ridley
FOODSERVICE

RECEIVED
Thomas Ridley QC Dept.
8:28 am, 10 Jul 2023

The food information supplied by Thomas Ridley Foodservice has been provided by the respective product manufacturer. Whilst we use reasonable endeavours to check this information and ensure its accuracy, we do not give any warranty (whether express or implied), guarantee or representation that it is true, accurate or complete in any respect.

As product information, ingredients, nutritional guides and dietary or allergy advice may change from time to time, we recommend that you always carefully read the product label prior to using or consuming any such products. You should not solely rely upon the information we provide and make your own assessment as to the suitability or otherwise of any given product.

Cadbury Double Decker Chocolate Bar 54.5g



EAN

7622210106421

Target market(s)

GB, IE

Components

Ingredients

Sugar

Glucose Syrup

Glucose-Fructose Syrup

Vegetable Fats (Palm, Shea, Sunflower, Rapeseed)

Wheat Flour (with added Calcium, Iron, Niacin and Thiamin)

Skimmed **Milk** Powder

Cocoa Butter

Cocoa Mass

Whey Permeate Powder (from **Milk**)

Fat-Reduced Cocoa Powder

Milk Fat

Whey Powder (from **Milk**)

Emulsifiers (E442, E471, **Soya** Lecithins)

Dried **Egg** White

Flavourings (from **Milk**)

Anti-Caking Agent (Calcium Carbonate)

Salt

Barley Malt Extract

Raising Agent (E503)

Milk Chocolate: Milk Solids 14 % minimum

Contains Vegetable Fats in addition to Cocoa Butter

Allergy Text

May contain Peanuts, Nuts.

Nutrition

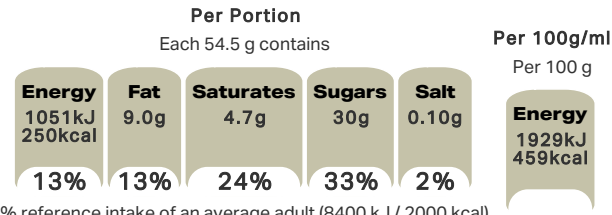
| | Per 100 g: | Per Bar (54.5 g): |
|--------------------|--------------------|--------------------|
| Energy | 1929 kJ (459 kcal) | 1051 kJ (250 kcal) |
| Fat | 16 g | 9.0 g |
| of which Saturates | 8.6 g | 4.7 g |
| Carbohydrate | 73 g | 40 g |
| of which Sugars | 54 g | 30 g |

| | | |
|---------|--------|--------|
| Fibre | 1.5 g | 0.8 g |
| Protein | 3.7 g | 2.0 g |
| Salt | 0.19 g | 0.10 g |

Calculated Nutrition

| | per 100g | Per Bar (54.5 g): |
|------------------------|----------|-------------------|
| Energy (kJ) | 1929 | 1051 |
| Energy (kcal) | 459 | 250 |
| Fat (g) | 16 | 9 |
| of which saturates (g) | 8.6 | 4.7 |
| Carbohydrate (g) | 73 | 40 |
| of which sugars (g) | 54 | 30 |
| Fibre (g) | 1.5 | 0.8 |
| Protein (g) | 3.7 | 2 |
| Salt (g) | 0.19 | 0.1 |

Front of Pack Nutrition



% reference intake of an average adult (8400 kJ / 2000 kcal)

Reference Intake Statement

Reference Intake Statement - % reference intake of an average adult (8400 kJ / 2000 kcal)

Product Description

Alternative Description

Supplier Preferred Product Name - Cadbury Double Decker Chocolate Bar 54.5g

Brand

Cadbury

Features

100% Sustainably Sourced Cocoa
Suitable for vegetarians

Standardised Brand

Brand - Cadbury

Regulated Product Name

Milk chocolate with smooth, chewy nougat (41 %) and crisp, crunchy cereal (9 %) filling.

Marketing

Company Name

Mondelez UK / Mondelez Ireland

Company Address

Mondelez UK,
PO Box 7008,
Birmingham,
B30 2PT.

Mondelez Ireland,
Malahide Road,
Coolock,
Dublin 5.

Third Party Logos

- Green Dot

Product Marketing

On the lower deck, you've got crisp, crunchy cereal filling. On the top deck, you'll find soft, chewy nougat. Together, they're smothered in Cadbury milk chocolate to make a bar that takes your tastebuds to bold new places. Made with sustainably sourced cocoa. Vegetarian friendly.

Manufacturer Marketing

By Appointment to H.M. The Queen Cocoa and Chocolate Manufacturers Cadbury UK Ltd., Bournville.

Other Information

Made under licence from Cadbury UK Ltd.

Further Description

BeTreatwise.net

Cocoa Life
Partnering with Fairtrade Foundation
www.cocoalife.org

Health & Lifestyle

Lifestyle

- Suitable for Vegetarians

Allergy Advice

Barley - Contains
Eggs - Contains
Milk - Contains
Nuts - May Contain
Peanuts - May Contain
Soya - Contains
Wheat - Contains

Storage & Usage

Storage Type

Type

Ambient

Storage

Store in a dry place. Protect from heat.

Brandbank Captured Pack Data

Pack Size

54.5g e

Numeric Size

Numeric Size - 54.5

Pack Type

Type - Wrap

Recycling Other Text

Usage Count

Number of uses - Servings

1

Usage Other Text

1x bar = 1 Portion. 1 portion per pack

Customer Services

Manufacturers Address

Mondelez UK,
PO Box 7008,
Birmingham,
B30 2PT.

Mondelez Ireland,
Malahide Road,
Coolock,
Dublin 5.

Return To

We are passionate about our great quality Cadbury products. Not completely satisfied? Please contact us:
Freephone 0800 818181 (UK only).

Mondelez UK,
PO Box 7008,
Birmingham,
B30 2PT.

Mondelez Ireland,
Freephone 1-800 678708
Malahide Road,
Coolock,
Dublin 5.
www.cadbury.co.uk

Telephone Helpline

0800 818181 (UK)
1-800 678708

Fax Number

Email Helpline

Web Address

www.cadbury.co.uk

Social Media

Extended Data

SEO Metatag

Double Decker, Double Decker Chocolate, Double Decker Chocolate Bar, Cadbury Double Decker, Are Double Deckers
Gluten Free, Gluten Free Chocolate, Vegetarian Chocolate, Whats In A Double Decker, Milk Chocolate, Chocolate With
Nougat

