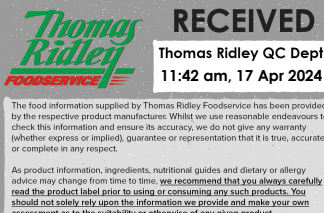


Changed Apr 16, 2024 10:40

Reviewed Apr 16, 2024 10:40

Erudus ID bf2ff8c397fe48c9832eb4490a4c5b0b

Version 2.0



Thomas Ridley
FOODSERVICE

RECEIVED
Thomas Ridley QC Dept.
11:42 am, 17 Apr 2024

The food information supplied by Thomas Ridley Foodservice has been provided by the respective product manufacturers. Whilst we use reasonable endeavours to check this information and ensure its accuracy, we do not give any warranty (whether express or implied), guarantee or representation that it is true, accurate or complete in any respect.

As product information, ingredients, nutritional guides and dietary or allergy advice may change from time to time, we recommend that you always carefully read the product label prior to using or consuming any such products. You should not solely rely upon the information we provide and make your own assessment as to the suitability or otherwise of any given product.



31015

Heinz No Added Sugar Banz 415g

No Added Sugar Banz 24x415g

PRODUCT DESCRIPTION

Full of Bean Heinz baked beans don't just taste great, but are nutritious too; naturally high in fibre, high in protein and low in fat, as well as contributing to 1 of your 5 a day. Our No Added Sugar Banz is also produced with 25% less salt than standard Heinz Banz, without compromising on the authentic Heinz taste.

Brand	H.J. Heinz
Manufacturer Product Code	76009343
Product Type	Food
Product Category	Beans & Pulses
Storage Type	Ambient
Erudus ID	bf2ff8c397fe48c9832eb4490a4c5b0b
Specification Type	Generic
Inner Component GTIN	5000157078773
Outer Case GTIN	5000157131355



INGREDIENTS

Ingredient Declaration

Beans (50%), Tomatoes (37%), Water, Modified Cornflour, Spirit Vinegar, Salt, Natural Flavouring, Spice Extracts, Sweetener - Steviol Glycosides, Herb Extract

ALLERGENS

Product Contains:

Celery/Celeriac	No	Mustard	No
Cereals Containing Gluten	No	Nuts (Tree)	No
Barley	No	Almond nuts	No
Oats	No	Brazil nuts	No
Rye	No	Cashew nuts	No
Wheat (including Spelt and Khorasan)	No	Hazelnuts	No
Crustacea	No	Macadamia (Queensland) nuts	No
Eggs	No	Pecan nuts	No
Fish	No	Pistachio nuts	No
Lupin	No	Walnuts	No
Milk	No	Peanuts	No
Molluscs	No	Sesame Seeds	No
		Soybeans	No
		Sulphur Dioxide and Sulphites	No

SUPPLEMENTARY INGREDIENT INFORMATION

Palm Oil	No
Hydrogenated Vegetable Oil/Fat	No
GM Protein/DNA	No

ADDITIVES

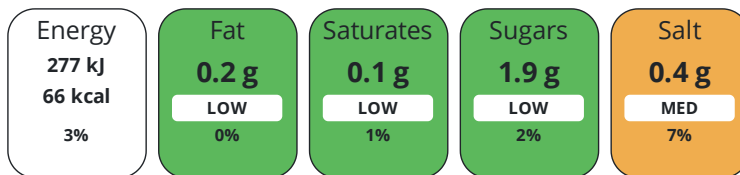
Product Contains:

Artificial Colours	No	Artificial Flavourings	No
		Artificial Preservatives	No
Vegan Diet	Suitable for	Vegetarian Diet	Suitable for
Halal Diet	No	Kosher Diet	No

DIET SUITABILITY

NUTRITIONAL INFORMATION

Each 100g/ml portion contains:



of your reference intake.

Typical values per 100g/ml : Energy 66kcal / 277kJ

Nutrient	per 100g	RI per 100g
Energy (kJ)	277 kJ	3%
Energy (kcal)	66 kcal	3%
Fat	0.2 g	0%
of which Saturates	< 0.1 g	1%
Carbohydrate	9.5 g	4%
of which Sugars	1.9 g	2%
Fibre	3.6 g	
Protein	4.6 g	9%
Salt	0.4 g	7%

SUPPLEMENTARY NUTRITIONAL INFORMATION

HANDLING & STORAGE INFORMATION

Directions For Use

COOKING GUIDELINES Hob (From Ambient) Hob: Heat gently in pan. Microwave (From Ambient) Microwave (850W): Use a covered microwaveable container. Heat for 1 1/2 minutes, stir. Heat for a further 1 minute.

Storage Instructions

Empty unused contents into a suitable covered container. Keep refrigerated and use within 2 days. Best before end - see can end.

Shelf Life from Time of Production	480 Days	Exempt From Shelf Life Labelling	No
---	----------	---	----

BRCGS Certified

ACCREDITATIONS/ CERTIFICATIONS/ ASSURANCE SCHEMES ORIGIN

Product Country of Origin/Place of United Kingdom

Provenance

Additional Origin Details

confidential

PRODUCT CHARACTERISTICS

Standards Testing

Do you undertake trend analysis of microbiological results?	No	Is shelf life testing undertaken?	No
--	----	--	----

CONFIGURATION	Case Configuration	Inner Pack Configuration		
	Total Quantity of Inner Components in Outer Case	24 Units		
	Is the Outer Case Splittable?	No		
PRODUCT WEIGHTS	Inner Component			
	Variable Weight Consumer Item	No		
	Inner Component Weight	415 g		
	Outer Case			
	Outer Case Gross Weight	415 kg		
	Outer Case Net Weight	415 kg		
PRODUCT DIMENSIONS	Inner Component			
	Inner Component Depth	75 mm		
	Inner Component Width	108 mm		
	Inner Component Height	75 mm		
	Outer Case			
	Outer Case Depth	455 mm		
	Outer Case Width	305 mm		
	Outer Case Height	110 mm		
	PALLET INFORMATION	Quantity of Cases Per Pallet Layer	24 Cases	Pallet Height 1.48 MTR
		Quantity of Layers Per Pallet	8 Layers	
Quantity of Cases Per Pallet		96 Cases		
OTHER INFORMATION CONTACT INFORMATION	Address			
	H.J. Heinz			
	The Shard			
	32 London Bridge Street			
	London			
	SE1 9SG			
	England			
	P: (Phone) 02037 650500			

The information on the [Erudus System](#) has been supplied by the manufacturers of the products and, whilst the owners of the Erudus System take steps to ensure the information is regularly updated, they give no warranty and no guarantee that the information is accurate. Product information and ingredients may change, please always read product labels carefully in addition to using the information provided by Erudus.

We do not accept liability for any inaccuracies or incorrect information contained on this site. Please visit <http://www.erudus.com/terms-and-conditions> for full terms and conditions.