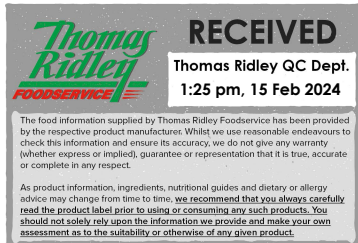


Changed Feb 14, 2024 11:16

Reviewed Feb 14, 2024 11:16

Erudus ID 0f620333a6ba413797f291f8f43557e4

Version 2.0



31017

Freshers Whole Orange Drink 2 x 5ltr

Concentrated Whole Orange Drink With Sugars And Sweeteners 2x5litre

PRODUCT DESCRIPTION

Concentrated whole orange drink with sugars and sweeteners

Brand	Aimia Foods Ltd
Manufacturer Product Code	F5WORG
Product Type	Drink
Product Category	Juices and Cordials
Storage Type	Ambient
Erudus ID	0f620333a6ba413797f291f8f43557e4
Specification Type	Drinks
Inner Component GTIN	5060113913814
Outer Case GTIN	05060113913906



INGREDIENTS

Ingredient Declaration

Water, comminuted oranges (10%), glucose-fructose syrup, acid (citric acid), acidity regulator (sodium citrate), preservatives (sodium benzoate, sodium metabisulphite), sweeteners (sodium saccharin, acesulfame K, aspartame*), flavourings, stabiliser (carboxymethylcellulose), antioxidant (ascorbic acid), colour (beta-carotene)

Ingredient Statements

* Contains a source of phenylalanine

ALLERGENS

Product Contains:

Celery/Celeriac	No	Mustard	No
Cereals Containing Gluten	No	Nuts (Tree)	No
Barley	No	Almond nuts	No
Oats	No	Brazil nuts	No
Rye	No	Cashew nuts	No
Wheat (including Spelt and Khorasan)	No	Hazelnuts	No
Crustacea	No	Macadamia (Queensland) nuts	No
Eggs	No	Pecan nuts	No
Fish	No	Pistachio nuts	No
Lupin	No	Walnuts	No
Milk	No	Peanuts	No
Molluscs	No	Sesame Seeds	No
		Soybeans	No
		Sulphur Dioxide and Sulphites	Yes

SUPPLEMENTARY INGREDIENT INFORMATION

Palm Oil	No
Hydrogenated Vegetable Oil/Fat	No
GM Protein/DNA	No

ADDITIVES

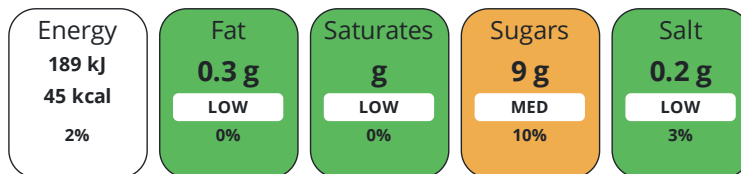
Product Contains:

Artificial Antioxidants	No	Artificial Flavourings	No
Artificial Colours	No	Artificial Preservatives	Yes
Artificial Flavour Enhancers	No	Artificial Sweeteners	Yes
Vegan Diet	Suitable for	Vegetarian Diet	Suitable for
Halal Diet	No	Kosher Diet	No

DIET
SUITABILITY

NUTRITIONAL
INFORMATION

Each 100g/ml portion contains:



of your reference intake.

Typical values per 100g/ml : Energy 45kcal / 189kj

Nutrient	per 100ml	RI per 100ml
Energy (kJ)	189 kJ	2%
Energy (kcal)	45 kcal	2%
Fat	0.3 g	0%
of which Saturates	0 g	0%
of which Mono-unsaturates	0 g	
of which Polyunsaturates	0 g	
Carbohydrate	10.3 g	4%
of which Sugars	9 g	10%
Fibre	0.1 g	
Protein	0.1 g	0%
Salt	0.2 g	3%

VITAMINS AND
MINERALS

Nutrient	per 100ml	RI per 100ml
Vitamin A	0 µg	0%
Vitamin C	0 mg	0%
Folate/Folic Acid	0 µg	0%
Calcium	0 mg	0%
Iron	0 mg	0%
Zinc	0 mg	0%

SUPPLEMENTARY
NUTRITIONAL
INFORMATION

Cholesterol per 100 g/ml (UK/FR)	0 g
Trans Fats per 100 g/ml	0 g
Fat Percentage in Dry Matter per 100 g/ml	0 %
Non Milk Extrinsic Sugars per 100 g/ml	0 g

HANDLING &
STORAGE
INFORMATION

Directions For Use

Shake well before use. Dilute 1 part concentrate to 4 parts water. For toddlers and young children dilute with extra water. Best served chilled.

Storage Instructions

Store in a cool, dry place away from direct sunlight.

Storage Instructions After Opening

Once opened use within 8 weeks.

Shelf Life from Time of Production	365 Days	Exempt From Shelf Life Labelling	No
---	----------	---	----

ACCREDITATIONS/
CERTIFICATIONS/
ASSURANCE
SCHEMES



Other Accreditation

N/A

ORIGIN

Product Country of Origin/Place of United Kingdom

Provenance

Additional Origin Details

N/A

PRODUCT
CHARACTERISTICS

Standards Testing

Do you undertake trend analysis of microbiological results?	Yes	Is shelf life testing undertaken?	Yes
		Commercially Sterile	No

HAZARD CONTROLS

Filters Yes

CONFIGURATION

Case Configuration

Inner Pack Configuration

Variable Inner Components in Outer Case No

Total Quantity of Inner Components in Outer Case 2 Units

Is the Outer Case Splittable? Yes

PRODUCT
WEIGHTS

Inner Component

Inner Component Volume 5 litre

e mark Yes

Outer Case

Outer Case Gross Weight 10.87 kg

Outer Case Net Weight 10.44 kg

PRODUCT
DIMENSIONS

Inner Component

Inner Component Depth 143 mm

Inner Component Width 143 mm

Inner Component Height 340 mm

Outer Case

Outer Case Depth 300 mm

Outer Case Width 150 mm

Outer Case Height 350 mm

PALLET
INFORMATION

Quantity of Cases Per Pallet Layer	24 Cases	Pallet Height	1.56 MTR
Quantity of Layers Per Pallet	4 Layers	Pallet Gross Weight	1070 kg
Quantity of Cases Per Pallet	96 Cases		

PACKAGING

Inner Component Packaging

Type	Materials	Weight	Recycled Plastic %	Recyclable	Returnable	Composite
Bottle	Plastic / PET (Polyethylene Terethphalate)	90 g	51 %			
Cap	Plastic / HDPE (High Density Polyethylene)	4.6 g	- %			
Other	Plastic / HDPE (High Density Polyethylene)	6.6 g	- %			
Label	Paper/Cardboard	0.44 g	- %			

Outer Case Packaging

Type	Materials	Weight	Recycled Plastic %	Recyclable	Returnable	Composite
Case	Paper/Cardboard / Corrugated	221 g	- %			
Label	Paper/Cardboard	1.7 g	- %			

Transport Packaging

Type	Materials	Weight	Recycled Plastic %	Recyclable	Returnable	Composite
Pallet Wrap	Plastic	280 g	- %			
Layer Card	Paper/Cardboard / Corrugated	1612 g	- %			
Pallet	Wood	25000 g	- %			

MARKETING
INFORMATION**Marketing Description**

10% Comminute Oranges

OTHER
INFORMATION**Intrastat/Taric Code**

0

Manufacturer Comments

N/A

CONTACT
INFORMATION

Address

Aimia Foods Ltd
Penny Lane
Haydock
Merseyside
WA11 0QZ
England

Technical Contact

Sophie Wall
Head of Technical
sophie.wall@aimiafoods.com

P: (Phone) 01942 272900

P: (Phone) 01942272900

Complaints Contact

Helen Bulmer
Customer Services Manager
customer.services@aimiafoods.com

P: (Phone) 01942 408600

The information on the [Erudus System](#) has been supplied by the manufacturers of the products and, whilst the owners of the Erudus System take steps to ensure the information is regularly updated, they give no warranty and no guarantee that the information is accurate. Product information and ingredients may change, please always read product labels carefully in addition to using the information provided by Erudus.

We do not accept liability for any inaccuracies or incorrect information contained on this site.
Please visit <http://www.erudus.com/terms-and-conditions> for full terms and conditions.