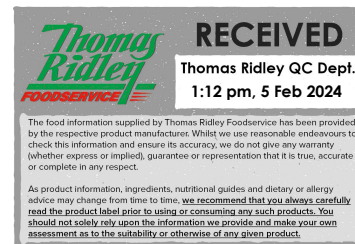


# Dialuxe Vanilla Ice Cream 2 Litre

Dialuxe Vanilla Ice Cream 2 Litre

## PRODUCT DESCRIPTION

Vanilla flavour lower sugar ice cream



<b>Brand</b>	Suncream Dairies Ltd.
<b>Manufacturer Product Code</b>	ADLV2
<b>Product Type</b>	Food
<b>Product Category</b>	Desserts
<b>Storage Type</b>	Frozen
<b>Erudus ID</b>	0456fd3cd2834c2aa802674e7e94a57a
<b>Specification Type</b>	Legacy
<b>Inner Component GTIN</b>	5010603000616
<b>Outer Case GTIN</b>	15010603000613



## INGREDIENTS

### Ingredient Declaration

Water, Polydextrose, Buttermilk Powder (**MILK**), Maltodextrin, Whey, Protein Concentrate (**MILK**), Fructose, Emulsifier (Mono and Di Glycerides of Fatty Acids), Stabilisers (Cellulose Gum, Guar Gum, Locust Bean Gum), Flavourings, Colours (Curcumin, Annatto Norbixin)

## ALLERGENS

Product Contains:

<b>Celery/Celeriac</b>	No	<b>Mustard</b>	No
<b>Cereals Containing Gluten</b>	No	<b>Nuts (Tree)</b>	No
<b>Barley</b>	No	<b>Almond nuts</b>	No
<b>Oats</b>	No	<b>Brazil nuts</b>	No
<b>Rye</b>	No	<b>Cashew nuts</b>	No
<b>Wheat (including Spelt and Khorasan)</b>	No	<b>Hazelnuts</b>	No
<b>Gluten content &lt;20ppm</b>	Yes	<b>Macadamia (Queensland) nuts</b>	No
<b>Crustacea</b>	No	<b>Pecan nuts</b>	No
<b>Eggs</b>	No	<b>Pistachio nuts</b>	No
<b>Fish</b>	No	<b>Walnuts</b>	No
<b>Lupin</b>	No	<b>Peanuts</b>	No
<b>Milk</b>	Yes	<b>Sesame Seeds</b>	No
<b>Molluscs</b>	No	<b>Soybeans</b>	No
		<b>Sulphur Dioxide and Sulphites</b>	No

## SUPPLEMENTARY INGREDIENT INFORMATION

<b>Palm Oil</b>	No
<b>Hydrogenated Vegetable Oil/Fat</b>	No
<b>GM Protein/DNA</b>	No

## ADDITIVES

Product Contains:

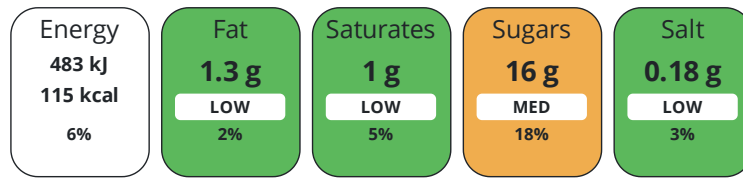
<b>Artificial Antioxidants</b>	No	<b>Artificial Flavourings</b>	Yes
<b>Artificial Colours</b>	No	<b>Artificial Preservatives</b>	No
<b>Artificial Flavour Enhancers</b>	No	<b>Artificial Sweeteners</b>	No

DIET  
SUITABILITY

<b>Suitable for Coeliacs</b>	Yes	<b>Halal Diet</b>	No
<b>Kosher Diet</b>	No	<b>Vegetarian Diet</b>	Suitable for
<b>Vegan Diet</b>	No		

NUTRITIONAL  
INFORMATION

Each 100g/ml serving contains:



of your reference intake.

Typical values per 100g/ml : Energy 115kcal / 483kj

Nutrient	per 100g/ml	RI per 100g/ml	per 100g/ml serving	RI per 100g/ml serving
<b>Energy (kJ)</b>	483 kJ	6%	483 kJ	6%
<b>Energy (kcal)</b>	115 kcal	6%	115 kcal	6%
<b>Fat</b>	1.3 g	2%	1.3 g	2%
<b>of which Saturates</b>	1 g	5%	1 g	5%
<b>of which Mono-unsaturates</b>	0.1 g		0.1 g	
<b>Carbohydrate</b>	16 g	6%	16 g	6%
<b>of which Sugars</b>	16 g	18%	16 g	18%
<b>Fibre</b>	12.2 g		12.2 g	
<b>Protein</b>	3.8 g	8%	3.8 g	8%
<b>Salt</b>	0.18 g	3%	0.2 g	3%
<b>Serving Size</b>	100 g			

SUPPLEMENTARY  
NUTRITIONAL  
INFORMATION

HFSS (HIGH IN  
FAT, SALT AND  
SUGAR)

<b>HFSS Status</b>	Yes
--------------------	-----

HANDLING &  
STORAGE  
INFORMATION

**Directions For Use**

Scoop from frozen

**Storage Instructions**

Always store frozen. Store at -18°C or below. Do not refreeze once defrosted.

<b>Shelf Life from Time of Production</b>	730 Days
---	----------

ACCREDITATIONS/  
CERTIFICATIONS/  
ASSURANCE  
SCHEMES



**Other Accreditation**

None

ORIGIN

<b>Product Country of Origin/Place of</b>	United Kingdom
---	----------------

**Provenance**

**Additional Origin Details**

UK

PRODUCT CHARACTERISTICS

Standards Testing

**Do you undertake trend analysis of microbiological results?** Yes

**Is shelf life testing undertaken?** Yes

Microbiological Standards

Organism	Description	Frequency	Target	Maximum	Sample (g or ml)
Coliforms (cfu/g or ml)		Annually	<100	100	1
E. Coli (cfu/g or ml)		Annually	=0	10	1
Listeria SPP (cfu/g or ml)		Annually	<0	0	25
Listeria Monocytogenes (cfu/g or ml)		Annually	<0	0	25
Total Viable Count (TVC) (cfu/g or ml)		Every Batch	<100000	100000	1
Salmonella (cfu/g or ml)		Annually	<0	0	25
Enterobacteriaceae (cfu/g or ml)		Every Batch	<10	100	1
Staphylococcus Aureus (cfu/g or ml)		Annually	<0	20	25
Bacillus Cereus (cfu/g or ml)	g	Annually	<0	50	25

CONFIGURATION

Case Configuration

Inner Pack Configuration

**Total Quantity of Inner Components in Outer Case** 12 Units

**Count per Inner Component** 1

**Is the Outer Case Splittable?** Yes

PRODUCT WEIGHTS

Inner Component

**Variable Weight Consumer Item** Yes

**Inner Component Weight** 900 g

**Net Drained Weight** 0 kg

**Weight/Volume**

2 Litres

Outer Case

**Outer Case Gross Weight** 11.12 kg

**Outer Case Net Weight** 9.72 kg

PRODUCT DIMENSIONS

Inner Component

**Inner Component Depth** 222 mm

**Inner Component Width** 162 mm

**Inner Component Height** 80 mm

Outer Case

**Outer Case Depth** 493 mm

**Outer Case Width** 228 mm

**Outer Case Height** 298 mm

PALLET INFORMATION

**Quantity of Cases Per Pallet Layer** 10 Cases

**Pallet Height** 1.7 MTR

**Quantity of Layers Per Pallet** 5 Layers

**Pallet Gross Weight** 584 kg

**Quantity of Cases Per Pallet** 50 Cases

PACKAGING

Inner Component Packaging

Type	Materials	Weight	Recycled Plastic %	Recyclable	Returnable	Composite
Tub	Plastic	95 g	0.00 %			

Outer Case Packaging

Type	Materials	Weight	Recycled Plastic %	Recyclable	Returnable	Composite
Case	Paper/Cardboard	319 g	- %			

Transport Packaging

Type	Materials	Weight	Recycled Plastic %	Recyclable	Returnable	Composite
Other	Plastic	168 g	0.00 %			
Other	Paper/Cardboard	3 g	- %			
Other	Wood	2800 g	- %			

OTHER INFORMATION

**Commodity Code** 21050010

CONTACT INFORMATION

Address  
 Suncream Dairies Ltd.  
 Unit 7D Claymore  
 Tame Valley Industrial Estate  
 Tamworth  
 Staffordshire  
 B77 5DQ  
 United Kingdom

Technical Contact  
 Joanna Kucz  
 Quality Manager  
 JoannaKucz@suncreamdairies.com

P. (Phone) 01827 282571 or 07398490796

P. (Phone) 01827 282571

Complaints Contact  
 Joanna Kucz  
 Quality Manager  
 JoannaKucz@suncreamdairies.com

Commercial Contact  
 Gillian Graham  
 Head of Sales  
 gilliangraham@suncreamdairies.com

P. (Phone) 07398490796

P. (Phone) 07834728903

The information on the [Erudus System](#) has been supplied by the manufacturers of the products and, whilst the owners of the Erudus System take steps to ensure the information is regularly updated, they give no warranty and no guarantee that the information is accurate. Product information and ingredients may change, please always read product labels carefully in addition to using the information provided by Erudus.

We do not accept liability for any inaccuracies or incorrect information contained on this site. Please visit <http://www.erudus.com/terms-and-conditions> for full terms and conditions.