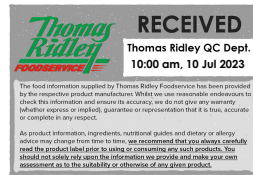


Supplier's Product Code : 12356879  
 Product Added : 01 May 2018  
 Last Updated by Supplier : 25 October 2021  
 erudus id : 3bcd8575fd164a2f9f68001e5980e8f9



The information on the Erudus System has been supplied by the manufacturers of the products and, whilst the owners of the Erudus System take steps to ensure the information is regularly updated, they give no warranty and no guarantee that the information is accurate. Product information and ingredients may change, please always read product labels carefully in addition to using the information provided by Erudus One.

We do not accept liability for any inaccuracies or incorrect information contained on this site. Please visit <http://www.erudus.com/terms-and-conditions> for full terms and conditions.

## MAGGI Mash Potato Flakes (low salt) 2x4kg

Short Product Name:  
 MAGGI Mash Potato Flakes (low salt) 4kg

Product Description:  
 Instant Mashed Potato Mix developed for hot & cold preparation.

### General Information

Food/Drink :	Food
Product Category :	Ambient
Generic Product Type :	Vegetable - Dry

**Supplier's Product Code :**  
 12356879  
**Supplier:** Nestle UK  
 1 City Place,  
 Gatwick  
 RH6 0PA  
 England  
 P: 0800 00 00 30

## OUTER PRODUCT

### Outer case Information

Outer Case GTIN :	7613033743023	Outer Case Length :	500 mm
Packaging Type Description :	Case	Outer Case Width :	400 mm
Total Quantity of Inner Units in Outer Case :	2 Units	Outer Case Height :	160 mm
Is Trade Item Splittable? :	No	Product Gross Weight :	8.87 kg
		Product Net Weight :	8.00 kg

### Pallet Information

Quantity of Cases Per Pallet Layer :	6 Cases	Pallet Height :	1.20 MTR
Quantity of Layers Per Pallet :	6 Layers	Pallet Gross Weight :	350.00 kg
Quantity of Cases Per Pallet :	36 Cases		

### Logistical Information

Shelf Life from Time of Production :	450 Days	Minimum Order Quantity :	1 Cases
Guaranteed Shelf Life on Delivery :	Not specified.	Delivery Lead Time :	3 Days

### Waste Packaging Weight - Outer Case

Glass :	0.00 g	Aluminium :	0.00 g
Plastic :	0.00 g	Steel :	0.00 g
Percentage Recycled Plastic :	Not specified.	Other :	0.00 g
Paper/Board :	785.00 g		

### Waste Packaging Weight - Transport Packaging

Plastic :	401.00 g	Wood Total :	30,000.00 g
Paper/Board :	0.00 g	Is Pallet Returnable? :	-
Percentage Recycled Plastic :	Not specified.		

### Other Information

**Supplier Comments:**  
 Not specified.

## INNER PRODUCT

### Origin Information

Product Country of Origin/Place of Provenance:	Netherlands (the)
--	-------------------

**Additional Origin Details:**  
Not specified.

### Inner Pack Information

Internal GTIN:	7613033743016
Packaging Type Description:	PE Laminated Paper Bag
Variable Weight Consumer Item:	No
Net Drained Weight:	Not specified.

Inner Unit Length:	242 mm
Inner Unit Height:	135 mm
Inner Unit Width:	192 mm
Inner Product Weight:	Not specified.
Inner Product Weight Units:	g

**Weight/Volume:**  
Net weight:4kg

### Handling Information

#### Directions For Use:

Following the recommended dosage below, measure the water into a suitable bowl. Weigh out the MAGGI Mashed Potato Flakes and whisk into the water. Cold prepared product can be covered, stored and chilled (below 5°C) for up to 72 hours (3 days). Before consumption, the product must be heated until the temperature at the centre is at least 75°C. Once heated, do not re-chill and re-serve.

#### Recommended Dosage:

To make approx. 5 x 120g servings (approx. 600g) use 100g of MAGGI Mashed Potato Flakes with 500ml cold or boiling water.  
To make approx. 10 x 120g servings (approx. 1.2kg) use 200g of MAGGI Mashed Potato Flakes with 1 litre of cold or boiling water.  
To make approx. 50 x 120g servings (approx. 6kg) use 1kg of MAGGI Mashed Potato Flakes with 5 litres of cold or boiling water.

#### Storage Instructions:

Store in a cool, dry place.  
Once opened use within 4 weeks.

## Dietary Information

### Ingredients :

Potato (88%), Skimmed MILK Powder, Emulsifier (Mono-and Diglycerides of Fatty Acids), Salt, Thickener (Xanthan Gum), Flavouring, Colour (Curcuma Extract), Preservative (Sodium **BISULPHITE**), Citric Acid.

### Product contains:

GM Protein/DNA :	No
Celery/Celeriac (and products thereof) :	No
Lupin (and products thereof) :	No
Eggs (and products thereof) :	No
Fish (and products thereof) :	No
Soybeans (and products thereof) :	No
Milk (and products thereof) :	Yes
Mustard (and products thereof) :	No
Peanuts (and products thereof) :	No
Sesame Seeds (and products thereof) :	No
Crustacea (and products thereof) :	No
Molluscs (and products thereof) :	No
Nuts (and products thereof) :	No
Almond nuts :	No
Hazelnuts :	No
Walnuts :	No
Cashew nuts :	No
Pecan nuts :	No
Brazil nuts :	No
Pistachio nuts :	No
Macadamia nuts :	No
Queensland nuts :	No
Cereals Containing Gluten :	No
Wheat (and products thereof) :	No
Rye (and products thereof) :	No
Barley (and products thereof) :	No
Oats (and products thereof) :	No
Spelt (and products thereof) :	No
Kamut (and products thereof) :	No
Gluten content <20ppm :	Yes
Hydrogenated Vegetable Oil/Fat :	No
Palm Oil :	No
Sulphur Dioxide and Sulphites :	Yes - above 10mg per kg/litre
Sulphur Dioxide/Sulphites Concentration :	700 mg/kg

### Product contains :

Artificial Antioxidants :	No
Artificial Colours :	No
Artificial Flavourings :	No
Artificial Flavour Enhancers :	No
Artificial Preservatives :	Yes
Artificial Sweeteners :	No

### Product suitability:

Suitable for a Vegetarian Diet :	Yes
Suitable for a Vegan Diet :	No
Suitable for Sufferers of Lactose Intolerance :	No
Suitable for Coeliacs :	Yes
Approved for a Halal Diet :	No
Approved for a Kosher Diet :	No
HFSS (High in Fat, Salt and Sugar) :	No

### Allergen Statement :

Not specified.

## Nutritional Information

Average Serving :	Not specified.
Count per 100g :	Not specified.
Count Per Pack :	Not specified.
Energy per 100 G/ML :	1,474.00 kJ
Energy per 100 G/ML :	348.00 kcal
Fat per 100 G/ML :	1 g
- of which Saturates per 100 G/ML :	0.8 g
- of which Mono-unsaturates per 100 G/ML :	Not specified.
- of which Polyunsaturates per 100 G/ML :	Not specified.
Trans Fats per 100 G\ML :	Not specified.
Carbohydrate Per 100 G/ML :	70.4 g
- of which Sugars per 100 G/ML :	7.2 g
- of which Polyols per 100 G/ML :	Not specified.
- of which Starch per 100 G/ML :	Not specified.
Fibre per 100 G/ML :	6.6 g
Protein per 100 G/ML :	11 g
Salt per 100 G/ML :	0.85 g
Sodium per 100 G\ML :	Not specified.

Vitamin A per 100g :	Not specified.
Vitamin C per 100g :	Not specified.
Folate/Folic Acid per 100g :	Not specified.
Calcium per 100g :	Not specified.
Iron per 100g :	Not specified.
Zinc per 100g :	Not specified.
Cholesterol per 100 G/ML (UK/FR) :	Not specified.
Non Milk Extrinsic Sugars per 100gm :	Not specified.
Alcoholic Strength %Vol :	Not specified.
Fat Percentage in Dry Matter per 100g :	Not specified.

## Waste Packaging Weight - Inner Unit

Glass :	0.00 g
Plastic :	34.00 g
Percentage Recycled Plastic :	Not specified.
Paper/Board :	9.00 g

Aluminium :	0.00 g
Steel :	0.00 g
Other :	0.00 g

## Accreditations / Certifications / Assurance Schemes

BRCGS Certified Production :	Yes
Red Tractor :	No
Fairtrade :	No
Marine Stewardship Council Certified (MSC) :	No
Organic :	No
SALSA (Safe & Local Supplier Approval) :	No
British Lion Mark :	No
RSPCA Assured :	No
LEAF Marque (Linking Environment and Farming) :	No
Rainforest Alliance :	No
Food for Life Supplier Scheme :	No
Quality Meat Scotland :	No
Farm Assured Welsh Livestock :	No
Northern Ireland Beef & Lamb Farm Quality Assurance Scheme :	No
Quality Standard Mark (Beef/Lamb) :	No
Roundtable of Sustainable Palm Oil (RSPO) :	No
School Approved (The Requirement for School Food Regulation 2014) :	No
IFS Food Standard :	No
Best Aquaculture Practices (BAP) Certification :	No
ISO 14001 (Environmental System) :	No
FSSC 22000 :	No

<b>Other Accreditation :</b>	Not specified.
Intra Stat/Taric Code :	Not specified.
Commodity Code :	Not specified.
Identification/Health Marks :	Not specified.

## Standards Testing

Do you undertake trend analysis of microbiological results? : No

Is shelf life testing undertaken? : No

## Microbiological Standards

Not available.

## Analytical Standards

Not available.