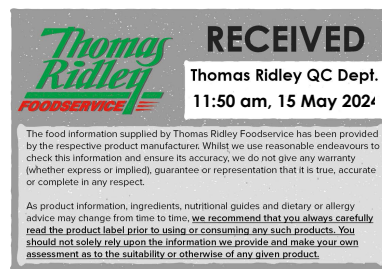


Changed May 15, 2024 10:08

Reviewed May 15, 2024 10:08

Erudus ID 9f43f2098d94404b89ec0c08d7910058

Version 4.0



32015

# Bird's Crème Caramel Dessert Mix 430g/ 2x50g

Crème Caramel Dessert Mix

## PRODUCT DESCRIPTION

Crème Caramel Dessert Mix. Just add water. Makes 20 140g portions. Suitable for vegetarians.

Brand	Premier Foods
Manufacturer Product Code	1017703
Product Type	Food
Product Category	Desserts
Storage Type	Ambient
Erudus ID	9f43f2098d94404b89ec0c08d7910058
Specification Type	Generic
Inner Component GTIN	5000354700361



## INGREDIENTS

### Ingredient Declaration

Crème Mix (81%) (Sugar, Skimmed **Milk** Powder, Fully Hydrogenated Palm Oil, Whey Powder (from **Milk**), Gelling Agent (Carrageenan), Stabiliser (Xanthan Gum), **Milk** Proteins, Salt, Flavourings, Colour (Carotenes)), Caramel Syrup (19%) (Glucose Syrup, Sugar, Water, Caramelised Sugar Syrup).

## ALLERGENS

Product Contains:

<b>Celery/Celeriac</b>	No
<b>Cereals Containing Gluten</b>	No
<b>Barley</b>	No
<b>Oats</b>	No
<b>Rye</b>	No
<b>Wheat (including Spelt and Khorasan)</b>	No
<b>Crustacea</b>	No
<b>Eggs</b>	No
<b>Fish</b>	No
<b>Lupin</b>	No
<b>Milk</b>	Yes
<b>Molluscs</b>	No
<b>Mustard</b>	No
<b>Nuts (Tree)</b>	No
<b>Almond nuts</b>	No
<b>Brazil nuts</b>	No
<b>Cashew nuts</b>	No
<b>Hazelnuts</b>	No
<b>Macadamia (Queensland) nuts</b>	No
<b>Pecan nuts</b>	No
<b>Pistachio nuts</b>	No
<b>Walnuts</b>	No
<b>Peanuts</b>	No
<b>Sesame Seeds</b>	No
<b>Soybeans</b>	No
<b>Sulphur Dioxide and Sulphites</b>	No

#### Additional Allergen Information

For allergens, see ingredients in bold.

#### SUPPLEMENTARY INGREDIENT INFORMATION

<b>Palm Oil</b>	Yes
<b>Hydrogenated Vegetable Oil/Fat</b>	Yes
<b>GM Protein/DNA</b>	No

#### ADDITIVES

Product Contains:

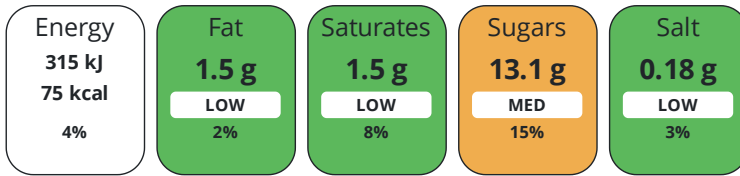
<b>Artificial Antioxidants</b>	No
<b>Artificial Colours</b>	No
<b>Artificial Flavour Enhancers</b>	No
<b>Artificial Flavourings</b>	Yes
<b>Artificial Preservatives</b>	No
<b>Artificial Sweeteners</b>	No

#### DIET SUITABILITY

<b>Vegan Diet</b>	No	<b>Vegetarian Diet</b>	Suitable for
<b>Halal Diet</b>	No	<b>Kosher Diet</b>	No

#### NUTRITIONAL INFORMATION

Each 100g/ml portion contains:



of your reference intake.

Typical values per 100g/ml : Energy 75kcal / 315kj

Nutrient	per 100g	RI per 100g	per 140g serving	RI per 140g serving
Energy (kJ)	315 kJ	4%	441 kJ	5%
Energy (kcal)	75 kcal	4%	105 kcal	5%
Fat	1.5 g	2%	2.1 g	3%
of which Saturates	1.5 g	8%	2.1 g	11%
Carbohydrate	14 g	5%	19.6 g	8%
of which Sugars	13.1 g	15%	18.3 g	20%
Fibre	< 0.5 g		0.7 g	
Protein	1.1 g	2%	1.5 g	3%
Salt	0.18 g	3%	0.3 g	5%
Serving Size			140 g	

SUPPLEMENTARY NUTRITIONAL INFORMATION

HFSS (HIGH IN FAT, SALT AND SUGAR)

HFSS Status	No
HFSS Score	3

HANDLING & STORAGE INFORMATION

Directions For Use

Just add water to make. Bird's Crème Caramel dessert mix is expertly developed to provide a smooth, light, delicious flavoured dessert. It requires only the minimum of time to produce perfect results. DIRECTIONS 1. CARAMEL - Squeeze the caramel syrup from the sachet(s) and use to line the base of 20 x 140g (110ml) moulds. (The caramel will flow more easily if the sachets are dipped in hot water for a few seconds before use). 2. CRÈME - Mix the contents of the pack smoothly with 568mls (1 pint) of cold water. Add to 1.7 litres (3 pints) of boiling water and bring back just to the boil, stirring all the time. Remove from the heat and pour carefully into the moulds. Leave in a cool place to set for approx. 1.5 hours. Refrigerate until required. YIELD - 2 x 1.1 litres or 20 x 140g (110ml) portions.

Storage Instructions

Store in a cool, dry place.

Shelf Life from Time of Production	365 Days
Exempt From Shelf Life Labelling	No

ACCREDITATIONS/ CERTIFICATIONS/ ASSURANCE SCHEMES

BRCGS Certified

Roundtable of Sustainable Palm Oil (RSPO)

Other Accreditation

ORIGIN

Product Country of Origin/Place of

United Kingdom

Provenance

Additional Origin Details

N/A

PRODUCT CHARACTERISTICS

Standards Testing

**Do you undertake trend analysis of microbiological results?** No

**Is shelf life testing undertaken?** Yes

CONFIGURATION

Case Configuration

**Total Quantity of Inner Components in Outer Case** 6 Units

Inner Pack Configuration

PRODUCT WEIGHTS

Inner Component

**Variable Weight Consumer Item** Yes

Outer Case

**Outer Case Gross Weight** 3.1 kg

**Outer Case Net Weight** 2.58 kg

PRODUCT DIMENSIONS

Inner Component

**Inner Component Depth** 167 mm

**Inner Component Width** 70 mm

**Inner Component Height** 175 mm

Outer Case

**Outer Case Depth** 366 mm

**Outer Case Width** 172 mm

**Outer Case Height** 176 mm

PALLET INFORMATION

**Quantity of Cases Per Pallet Layer** 15 Cases

**Quantity of Layers Per Pallet** 7 Layers

**Quantity of Cases Per Pallet** 105 Cases

**Pallet Height** 1.4 MTR

**Pallet Gross Weight** 355.5 kg

PACKAGING

Inner Component Packaging

Type	Materials	Weight	Recycled Plastic %	Recyclable	Returnable	Composite
Carton	Plastic	10 g	- %			
Carton	Paper/Cardboard	38 g	- %			

Outer Case Packaging

Type	Materials	Weight	Recycled Plastic %	Recyclable	Returnable	Composite
Case	Paper/Cardboard	159 g	- %			

Transport Packaging

Type	Materials	Weight	Recycled Plastic %	Recyclable	Returnable	Composite
Other	Plastic	444 g	- %		Yes	
Other	Wood	25000 g	- %		Yes	

OTHER INFORMATION

**Manufacturer Comments**

The outer barcode has been left blank on this spec as a new spec has been published for 2024 with the same barcode. Both this product and the new product will remain as published on erudus for approx 12 months to allow for the sell through of stocks. For reference the outer case barcode is= 05000117700393. Nutrition= values are as prepared.

## CONTACT INFORMATION

### Address

Premier Foods  
Premier Foods, Premier House  
Centrium Business Park, Griffiths Way  
St Albans  
AL1 2RE  
England

P: (Phone) 01727 815850

### Technical Contact

Nicola Ratcliffe  
Business Unit Coordinator  
nicola.ratcliffe@premierfoods.co.uk

### Complaints Contact

Consumer Relations Team  
Customer Care  
LCescalations@premierfoods.co.uk

The information on the [Erudus System](#) has been supplied by the manufacturers of the products and, whilst the owners of the Erudus System take steps to ensure the information is regularly updated, they give no warranty and no guarantee that the information is accurate. Product information and ingredients may change, please always read product labels carefully in addition to using the information provided by Erudus.

We do not accept liability for any inaccuracies or incorrect information contained on this site.  
Please visit <http://www.erudus.com/terms-and-conditions> for full terms and conditions.