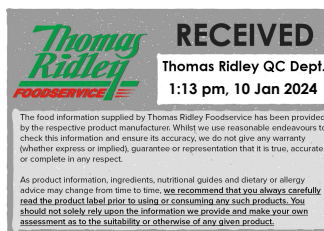


Changed Jan 10, 2024 11:45

Reviewed Jan 10, 2024 11:45

Erudus ID e3fcd181a6564a79b76d6c9aeba91b0c

Version 2.0



# Big Al's Flame Cooked 4oz Beef Burgers

Big Al's Flame Cooked 4oz Beef Burgers

## PRODUCT DESCRIPTION

Frozen, cooked seasoned beef burgers with added textured soya protein. \* Weight before cooking.

Average cooked weight 90g. 4.32 kg (2 x 2.16 kg). Approx. 48 burgers per case

Brand	Kepak Foodservice
Manufacturer Product Code	901342,GS901342
Product Type	Food
Product Category	Meatballs, Burgers & Sausages
Storage Type	Frozen
Erudus ID	e3fcd181a6564a79b76d6c9aeba91b0c
Specification Type	Meat
Inner Component GTIN	5099556008009
Outer Case GTIN	05099556009327



## INGREDIENTS

### Ingredient Declaration

Beef (85%), Beef Fat, Textured **SOYA** Protein, Dextrose, **WHEAT** Gluten, **WHEAT** Flour (with Calcium Carbonate, Iron, Niacin, Thiamin), Stabiliser, Triphosphates; **EGG** White Powder, Salt, Onion Powder, Yeast Extract, Flavouring

## ALLERGENS

Product Contains:

Celery/Celeriac	No	Mustard	No
Cereals Containing Gluten	Yes	Nuts (Tree)	No
Barley	No	Almond nuts	No
Oats	No	Brazil nuts	No
Rye	No	Cashew nuts	No
Wheat (including Spelt and Khorasan)	Yes	Hazelnuts	No
Crustacea	No	Macadamia (Queensland) nuts	No
Eggs	Yes	Pecan nuts	No
Fish	No	Pistachio nuts	No
Lupin	No	Walnuts	No
Milk	No	Peanuts	No
Molluscs	No	Sesame Seeds	No
		Soybeans	Yes
		Sulphur Dioxide and Sulphites	No

## SUPPLEMENTARY INGREDIENT INFORMATION

Palm Oil	No
Hydrogenated Vegetable Oil/Fat	No
GM Protein/DNA	No

ADDITIVES

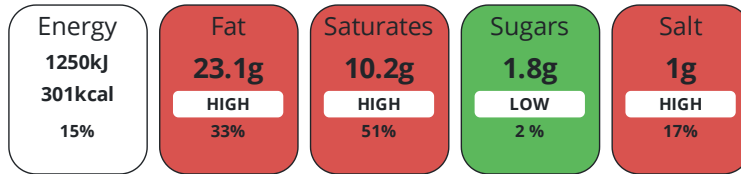
Product Contains:

<b>Artificial Antioxidants</b>	No	<b>Artificial Flavourings</b>	No
<b>Artificial Colours</b>	No	<b>Artificial Preservatives</b>	No
<b>Artificial Flavour Enhancers</b>	No	<b>Artificial Sweeteners</b>	No
<b>Halal Diet</b>	No	<b>Kosher Diet</b>	No

DIET SUITABILITY

NUTRITIONAL INFORMATION

Each 100g/ml portion contains:



of your reference intake.

Typical values per 100g/ml : Energy 301kcal / 1250kj

Nutrient	per 100g	RI per 100g
<b>Energy (kj)</b>	1250 kj	15%
<b>Energy (kcal)</b>	301 kcal	15%
<b>Fat</b>	23.1 g	33%
<b>of which Saturates</b>	10.2 g	51%
<b>Carbohydrate</b>	3.2 g	1%
<b>of which Sugars</b>	1.8 g	2%
<b>Fibre</b>	1.8 g	
<b>Protein</b>	19.2 g	38%
<b>Salt</b>	1 g	17%

SUPPLEMENTARY NUTRITIONAL INFORMATION

HANDLING & STORAGE INFORMATION

**Directions For Use**

For best results cook from frozen. Appliances may vary, the following are guidelines only. Adjust times to suit your appliance. Remove all packaging before cooking. Ensure product is piping hot before serving. Microwave: Heat one portion at a time. Remove product from packaging, place on a non-metallic plate and cover with cling film. 1000W – 1 min 20 seconds 1900W – 45 seconds Allow to stand for 30 seconds.

**Storage Instructions**

Keep frozen. Store in a freezer at -18C or cooler. Do not re-freeze if thawed.

<b>Shelf Life from Time of Production</b>	730 Days	<b>Exempt From Shelf Life Labelling</b>	No
---	----------	---	----

ACCREDITATIONS/ CERTIFICATIONS/ ASSURANCE SCHEMES



ORIGIN

**Product Country of Origin/Place of** United Kingdom

**Provenance**

**Additional Origin Details**

Made in the UK. using Irish and British Beef

PRODUCT CHARACTERISTICS

Standards Testing

<b>Do you undertake trend analysis of microbiological results?</b>	Yes	<b>Is shelf life testing undertaken?</b>	Yes
--	-----	--	-----

Microbiological Standards

Organism	Description	Frequency	Target	Maximum	Sample (g or ml)
Clostridium Perfringens (cfu/g or ml)		Every Batch	<10	100	10
E. Coli (cfu/g or ml)		Every Batch	<10	10	10
Enterobacteriaceae (cfu/g or ml)		Every Batch	<10	100	10
Listeria SPP (cfu/g or ml)	Detected in 25 g	Every Batch	<0	1	25
Salmonella (cfu/g or ml)	Detected in 25 g	Every Batch	<0	1	25
Aerobic Colony Count (ACC) (cfu/g or ml)		Every Batch	<1000	10000	10
Coagulase-positive Staphylococci (cfu/g or ml)		Every Batch	<10	100	10

CONFIGURATION

Case Configuration Inner Pack Configuration

**Total Quantity of Inner Components in** 2 Units

**Outer Case**

**Is the Outer Case Splittable?** Yes

PRODUCT WEIGHTS

Inner Component

**Variable Weight Consumer Item** Yes

Outer Case

**Outer Case Gross Weight** 4.63 kg

**Outer Case Net Weight** 4.32 kg

PRODUCT DIMENSIONS

Inner Component

**Inner Component Depth** 418 mm

**Inner Component Width** 129 mm

**Inner Component Height** 579 mm

Outer Case

**Outer Case Depth** 383 mm

**Outer Case Width** 223 mm

**Outer Case Height** 158 mm

PALLET INFORMATION

**Quantity of Cases Per Pallet Layer** 13 Cases

**Pallet Height** 1.73 MTR

**Quantity of Layers Per Pallet** 10 Layers

**Quantity of Cases Per Pallet** 130 Cases

PACKAGING

Inner Component Packaging

Type	Materials	Weight	Recycled Plastic %	Recyclable	Returnable	Composite
Bag	Plastic	24 g	- %			

Outer Case Packaging

Type	Materials	Weight	Recycled Plastic %	Recyclable	Returnable	Composite
Case	Paper/Cardboard	278 g	- %			

OTHER INFORMATION

**Identification/Health Marks** GBFY022

CONTACT  
INFORMATION

Address

Kepak Foodservice  
Unit 3  
Block 10, Blanchardstown Corporate Park  
Blanchardstown  
Dublin 15  
D15KD2W  
Ireland

P: (Phone) +353 18822400

Technical Contact

Orla Sherry  
Technical Director, Foods Division  
Orla.Sherry@kepak.com

P: (Phone) : +353 18822400

The information on the [Erudus System](#) has been supplied by the manufacturers of the products and, whilst the owners of the Erudus System take steps to ensure the information is regularly updated, they give no warranty and no guarantee that the information is accurate. Product information and ingredients may change, please always read product labels carefully in addition to using the information provided by Erudus.

We do not accept liability for any inaccuracies or incorrect information contained on this site.  
Please visit <http://www.erudus.com/terms-and-conditions> for full terms and conditions.