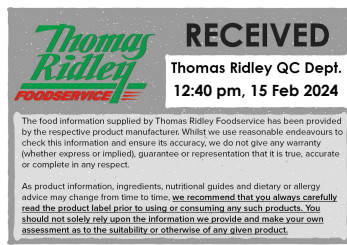


Changed Feb 13, 2024 10:58

Reviewed Feb 13, 2024 10:58

Erudus ID 7bab7694f2d74c6580bab330caa5644c

Version 2.0



32206

Honeycomb Cheesecake Pre-Cut 1 x 12 Portions

Honeycomb Cheesecake

PRODUCT DESCRIPTION

Digestive biscuit base topped with creamy cheesecake, decorated with dark chocolate truffle, chocolate honeycombs and honeycomb pieces.

Brand	Chantilly Patisserie
Manufacturer Product Code	02-12-002-5518
Product Type	Food
Product Category	Desserts
Storage Type	Frozen
Erudus ID	7bab7694f2d74c6580bab330caa5644c
Specification Type	Bakery Products



Outer Case GTIN 5060076945518



INGREDIENTS

Ingredient Declaration

Cream (**MILK**) (30%), Low Fat Soft Cheese (**MILK**) (21%), Biscuit Crumb (Wheat Flour (**WHEAT** Flour, Calcium Carbonate, Iron, Niacin, Thiamin), Wholemeal **WHEAT** Flour, Vegetable Shortening (Palm Oil, Rapeseed Oil), Sugar, Partially Inverted Sugar Syrup, Raising Agents (Sodium Bicarbonate, Ammonium Bicarbonate), Salt), Sugar, Margarine (Palm & Rapeseed Oil, Water, Salt, Emulsifier (Polyglycerol Esters of Fatty Acids), Colour (Annatto Bixin, Curcumin), Natural Flavouring), Chocolate Honeycombs (3%) (Sugar, Skimmed **MILK** Powder, Cocoa Butter, Glucose Syrup, **BARLEY** Malt Extract, Cocoa Mass, Palm Fat, **MILK** Fat, Lactose (**MILK**), Whey Permeate (from **MILK**), Emulsifiers (Sorbitan Tristearate, **SOYA** Lecithin), **WHEAT** Flour, Palm Kernel Fat, Raising Agents (Calcium Phosphates, Sodium Carbonates, Potassium Carbonates), Palm Kernel Oil, **WHEAT** Gluten, Whey Powder (**MILK**), Glazing Agent (Pectins), Salt, Vanilla Extract), Corn Starch, Dark Chocolate (Cocoa Mass, Sugar, Cocoa Butter, Emulsifier (**SOYA** Lecithin), Natural Vanilla Flavouring), Honeycomb (1%) (Sugar, Glucose Syrup, Vegetable Fats (Palm Kernel Oil, Palm Oil), Sodium Bicarbonate), Dark Chocolate Shavings (Sugar, Cocoa Mass, Cocoa Butter, Emulsifier (**SOYA** Lecithin), Natural Vanilla Flavouring), Beef Gelatine, Vanilla Flavour, Cocoa Powder.

ALLERGENS

Product Contains:

Celery/Celeriac	No	Mustard	No
Cereals Containing Gluten	Yes	Nuts (Tree)	May Contain
Barley	Yes	Almond nuts	May Contain
Oats	May Contain	Brazil nuts	No
Rye	No	Cashew nuts	No
Wheat (including Spelt and Khorasan)	Yes	Hazelnuts	May Contain
Crustacea	No	Macadamia (Queensland) nuts	No
Eggs	May Contain	Pecan nuts	May Contain
Fish	No	Pistachio nuts	May Contain
Lupin	No	Walnuts	No
Milk	Yes	Peanuts	No
Molluscs	No	Sesame Seeds	No
		Soybeans	Yes
		Sulphur Dioxide and Sulphites	No

Risk Source:

Additional Allergen Information

Product contains Wheat, Gluten, Milk, Egg, Soya, Gluten (from Barley). Produced in a manufacturing site which uses Nuts, Egg, Sulphites, Gluten (from Oats).

SUPPLEMENTARY INGREDIENT INFORMATION

Palm Oil	Yes	Alcoholic Strength %Vol (ABV)	0 % Vol
Hydrogenated Vegetable Oil/Fat	Yes		
GM Protein/DNA	No		

ADDITIVES

Product Contains:

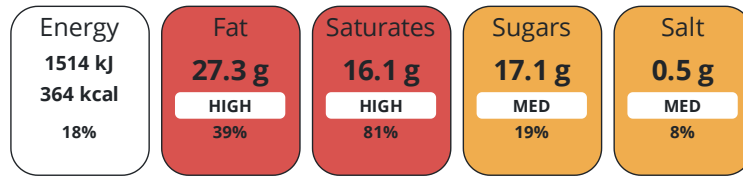
Artificial Antioxidants	No	Artificial Flavourings	No
Artificial Colours	No	Artificial Preservatives	No
Artificial Flavour Enhancers	No	Artificial Sweeteners	No

DIET SUITABILITY

Vegan Diet	No	Vegetarian Diet	No
Halal Diet	No	Kosher Diet	No

NUTRITIONAL INFORMATION

Each 100g/ml portion contains:



of your reference intake.

Typical values per 100g/ml : Energy 364kcal / 1514kJ

Nutrient	per 100g	RI per 100g	per 150g serving	RI per 150g serving
Energy (kJ)	1514 kJ	18%	2271 kJ	27%
Energy (kcal)	364 kcal	18%	546 kcal	27%
Fat	27.3 g	39%	41 g	59%
of which Saturates	16.1 g	81%	24.2 g	121%
of which Mono-unsaturates	6.5 g		9.8 g	
of which Polyunsaturates	1.7 g		2.6 g	
Carbohydrate	24.9 g	10%	37.4 g	14%
of which Sugars	17.1 g	19%	25.7 g	29%
of which Starch	7.7 g		11.6 g	
Fibre	0.7 g		1.1 g	
Protein	4.8 g	10%	7.2 g	14%
Salt	0.5 g	8%	0.8 g	13%
Sodium	200 mg		300 mg	
Serving Size	150 g			

VITAMINS AND MINERALS

Nutrient	per 100g	RI per 100g	per 150g serving	RI per 150g serving
Vitamin A	325 µg	41%	487.5 µg	61%
Vitamin C	1 mg	1%	1.5 mg	2%
Folate/Folic Acid	4 µg	2%	6 µg	3%
Calcium	30 mg	4%	45 mg	6%
Iron	0.1 mg	1%	0.2 mg	1%
Zinc	0.1 mg	1%	0.2 mg	2%

SUPPLEMENTARY NUTRITIONAL INFORMATION

Cholesterol per 100 g/ml (UK/FR)	0.04 g
Trans Fats per 100 g/ml	0.6 g
Non Milk Extrinsic Sugars per 100 g/ml	14.5 g

HFSS (HIGH IN FAT, SALT AND SUGAR) HANDLING & STORAGE INFORMATION

HFSS Status	Yes
-------------	-----

Directions For Use

To defrost, remove all packaging and refrigerate for 12 hours for the whole cheesecake or for 2-3 hours per portion. Once defrosted keep refrigerated and use within 48 hours. Do not re-freeze.

Storage Instructions

Store at -18°C.

Shelf Life from Time of Production	730 Days	Exempt From Shelf Life Labelling	No
------------------------------------	----------	----------------------------------	----

ACCREDITATIONS/ CERTIFICATIONS/ ASSURANCE SCHEMES



Other Accreditation

None

ORIGIN

Product Country of Origin/Place of Origin: United Kingdom

Provenance

Additional Origin Details

Ingredients sourced from the UK and EU.

PRODUCT CHARACTERISTICS

Standards Testing

Do you undertake trend analysis of microbiological results?	No	Is shelf life testing undertaken?	No
---	----	-----------------------------------	----

Microbiological Standards

Organism	Description	Frequency	Target	Maximum	Sample (g or ml)
E. Coli (cfu/g or ml)		Occasionally	<10	100	10
Enterobacteriaceae (cfu/g or ml)		Occasionally	<10	10000	10
Listeria Monocytogenes (cfu/g or ml)	Absent in 25g	Occasionally	<0	0	25
Staphylococcus Aureus (cfu/g or ml)		Occasionally	<20	100	10
Salmonella (cfu/g or ml)	Absent in 25g	Occasionally	<0	0	25

CONFIGURATION	Case Configuration		Inner Pack Configuration				
	Total Quantity of Inner Components in Outer Case	1 Units					
	Is the Outer Case Splittable?	No					
PRODUCT WEIGHTS	Inner Component						
	Variable Weight Consumer Item	Yes					
	Inner Component Weight	1800 g					
	Outer Case						
	Outer Case Gross Weight	2 kg					
	Outer Case Net Weight	1.8 kg					
PRODUCT DIMENSIONS	Inner Component						
	Inner Component Depth	0 mm					
	Inner Component Width	250 mm					
	Inner Component Height	70 mm					
	Outer Case						
	Outer Case Depth	300 mm					
	Outer Case Width	295 mm					
PALLET INFORMATION	Quantity of Cases Per Pallet Layer	12 Cases	Pallet Height	1.5 MTR			
	Quantity of Layers Per Pallet	15 Layers	Pallet Gross Weight	360 kg			
	Quantity of Cases Per Pallet	180 Cases					
PACKAGING	Inner Component Packaging						
	Type	Materials	Weight	Recycled Plastic %	Recyclable	Returnable	Composite
	Box	Paper/Cardboard	70 g	- %			
	Outer Case Packaging						
	Type	Materials	Weight	Recycled Plastic %	Recyclable	Returnable	Composite
	Case	Paper/Cardboard	170 g	- %			
	Transport Packaging						
	Type	Materials	Weight	Recycled Plastic %	Recyclable	Returnable	Composite
	Other	Plastic	275 g	- %		Yes	
	Other	Paper/Cardboard	500 g	- %		Yes	
	OTHER INFORMATION	Manufacturer Comments					
		Minimum order quantities are for a single layer of product . Providing that a total minimum of 144 cases to a maximum 180 cases are ordered the pallet can consist of mixed products.					

CONTACT
INFORMATION

Address

Chantilly Patisserie
Aspen Way Yalberton Industrial Estate
Aspen Way
Paignton
Paignton
TQ4 7QR
England

P: (Phone) 01803 663434

Complaints Contact

Claire Dawson
Technical Director
cdawson@chantillypatisserie.co.uk

P: (Phone) +441803663434

Technical Contact

Claire Dawson
Technical Director
cdawson@chantillypatisserie.co.uk

P: (Phone) +441803663434

Commercial Contact

Andrew Hart
Business Development Manager
ahart@chantillypatisserie.co.uk

P: (Phone) +441803663434

The information on the [Erudus System](#) has been supplied by the manufacturers of the products and, whilst the owners of the Erudus System take steps to ensure the information is regularly updated, they give no warranty and no guarantee that the information is accurate. Product information and ingredients may change, please always read product labels carefully in addition to using the information provided by Erudus.

We do not accept liability for any inaccuracies or incorrect information contained on this site.
Please visit <http://www.erudus.com/terms-and-conditions> for full terms and conditions.