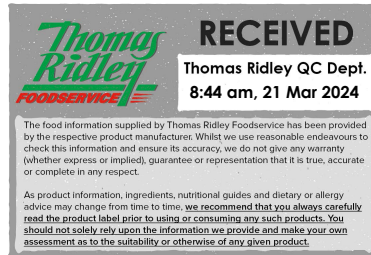


Changed Mar 20, 2024 11:41

Reviewed Mar 20, 2024 11:41

Erudus ID 52de6822a7044620a4c7504bbec49462

Version 3.0



Thomas Ridley
FOODSERVICE

RECEIVED
Thomas Ridley QC Dept.
8:44 am, 21 Mar 2024

The food information supplied by Thomas Ridley Foodservice has been provided by the respective product manufacturer. Whilst we use reasonable endeavours to check this information and ensure its accuracy, we do not give any warranty (whether express or implied), guarantee or representation that it is true, accurate or complete in any respect.

As product information, ingredients, nutritional guides and dietary or allergy advice may change from time to time, we recommend that you always carefully read the product label prior to using or consuming any such products. You should not solely rely upon the information we provide and make your own assessment as to the suitability or otherwise of any given product.



32213

CIABATTA

Ciabatta 20x220g

PRODUCT DESCRIPTION

Frozen, fully-baked hand moulded slipper shaped bread with open-textured crumb.

Brand	Speciality Breads Ltd
Manufacturer Product Code	FB670
Product Type	Food
Product Category	Bread Buns & Rolls
Storage Type	Frozen
Erudus ID	52de6822a7044620a4c7504bbec49462
Specification Type	Bakery Products



Outer Case GTIN 5032633156705



INGREDIENTS

Ingredient Declaration

WHEAT Flour (Flour (WHEAT Flour, Calcium, Iron, Niacin, Thiamin)), Water, Light RYE Flour, Yeast, Salt (Salt, Anti-caking Agent (Sodium Ferrocyanide E535)), Extra Virgin Rapeseed Oil, WHEAT GLUTEN, Bread Improver (WHEAT Flour (with Calcium, Iron, Niacin, Thiamin)), Enzymes Xylanase, Alpha Amylase, Glucose Oxidase, Flour Treatment Agent Ascorbic Acid, BARLEY Malt Flour.

ALLERGENS

Product Contains:

Celery/Celeriac	No	Mustard	No
Cereals Containing Gluten	Yes	Nuts (Tree)	No
Barley	Yes	Almond nuts	No
Oats	No	Brazil nuts	No
Rye	Yes	Cashew nuts	No
Wheat (including Spelt and Khorasan)	Yes	Hazelnuts	No
Crustacea	No	Macadamia (Queensland) nuts	No
Eggs	May Contain	Pecan nuts	No
Fish	No	Pistachio nuts	No
Lupin	No	Walnuts	No
Milk	May Contain	Peanuts	No
Molluscs	No	Sesame Seeds	No
		Soybeans	No
		Sulphur Dioxide and Sulphites	No

Risk Source:

SUPPLEMENTARY INGREDIENT INFORMATION

Palm Oil	No
Hydrogenated Vegetable Oil/Fat	No
GM Protein/DNA	No

ADDITIVES

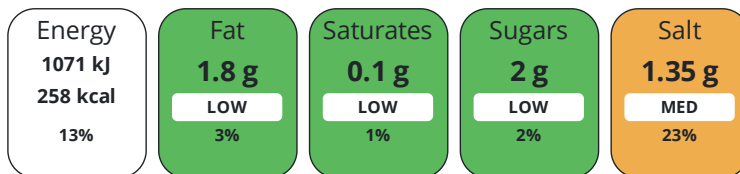
Product Contains:

Artificial Antioxidants	No	Artificial Flavourings	No
Artificial Colours	No	Artificial Preservatives	No
Artificial Flavour Enhancers	No	Artificial Sweeteners	No
Vegan Diet	Suitable for	Vegetarian Diet	Suitable for
Halal Diet	No	Kosher Diet	No

DIET
SUITABILITY

NUTRITIONAL
INFORMATION

Each 100g/ml portion contains:



of your reference intake.

Typical values per 100g/ml : Energy 258kcal / 1071kJ

Nutrient	per 100g	RI per 100g
Energy (kJ)	1071 kJ	13%
Energy (kcal)	257.6 kcal	13%
Fat	1.8 g	3%
of which Saturates	0.1 g	1%
of which Mono-unsaturates	0.6 g	
of which Polyunsaturates	0.2 g	
Carbohydrate	52.6 g	20%
of which Sugars	2 g	2%
of which Starch	0 g	
Fibre	2.8 g	
Protein	9.1 g	18%
Salt	1.35 g	23%
Sodium	532 mg	

VITAMINS AND
MINERALS

Nutrient	per 100g	RI per 100g
Vitamin A	0 µg	0%
Vitamin C	0 mg	0%
Folate/Folic Acid	11.43 µg	6%
Calcium	1.42 mg	0%
Iron	0 mg	0%
Zinc	0 mg	0%

SUPPLEMENTARY
NUTRITIONAL
INFORMATION

Cholesterol per 100 g/ml (UK/FR)	0 g
Trans Fats per 100 g/ml	0 g
Fat Percentage in Dry Matter per 100 g/ml	0 %
Non Milk Extrinsic Sugars per 100 g/ml	0 g

HFSS (HIGH IN
FAT, SALT AND
SUGAR)

HFSS Status	No
--------------------	----

HANDLING & STORAGE INFORMATION

Directions For Use

FULLY BAKED. DEFROST INSIDE FOOD-SAFE PLASTIC BAG AT ROOM TEMPERATURE UNTIL COMPLETELY THAWED

Storage Instructions

FROZEN. STORE AT -18°C. DO NOT RE-FREEZE.

ACCREDITATIONS/ CERTIFICATIONS/ ASSURANCE SCHEMES ORIGIN

Shelf Life from Time of Production	365 Days	Exempt From Shelf Life Labelling	No
---	----------	---	----

BRCGS Certified		Red Tractor	
------------------------	--	--------------------	--

Product Country of Origin/Place of United Kingdom

Provenance

Additional Origin Details

n/a

PRODUCT CHARACTERISTICS

Standards Testing

Do you undertake trend analysis of microbiological results?	Yes	Is shelf life testing undertaken?	Yes
--	-----	--	-----

CONFIGURATION

Case Configuration

Inner Pack Configuration

Total Quantity of Inner Components in Outer Case	20 Units	Count per Inner Component	20
---	----------	----------------------------------	----

Outer Case

Is the Outer Case Splittable?	No
--------------------------------------	----

PRODUCT WEIGHTS

Inner Component

Variable Weight Consumer Item	No
--------------------------------------	----

Inner Component Weight	220 g
-------------------------------	-------

Net Drained Weight	0 g
---------------------------	-----

Outer Case

Outer Case Gross Weight	4.78 kg
--------------------------------	---------

Outer Case Net Weight	0.38 kg
------------------------------	---------

PRODUCT DIMENSIONS

Inner Component

Inner Component Depth	595 mm
------------------------------	--------

Inner Component Width	235 mm
------------------------------	--------

Inner Component Height	268 mm
-------------------------------	--------

Outer Case

Outer Case Depth	238 mm
-------------------------	--------

Outer Case Width	598 mm
-------------------------	--------

Outer Case Height	268 mm
--------------------------	--------

PALLET INFORMATION

Quantity of Cases Per Pallet Layer	8 Cases	Pallet Height	1.85 MTR
---	---------	----------------------	----------

Quantity of Layers Per Pallet	6 Layers	Pallet Gross Weight	242.08 kg
--------------------------------------	----------	----------------------------	-----------

Quantity of Cases Per Pallet	48 Cases
-------------------------------------	----------

PACKAGING

Inner Component Packaging

Type	Materials	Weight	Recycled Plastic %	Recyclable	Returnable	Composite
Bag	Plastic	22 g	- %			

Outer Case Packaging

Type	Materials	Weight	Recycled Plastic %	Recyclable	Returnable	Composite
Case	Paper/Cardboard	389 g	- %			

Transport Packaging

Type	Materials	Weight	Recycled Plastic %	Recyclable	Returnable	Composite
Other	Plastic	525 g	- %		Yes	
Other	Paper/Cardboard	110 g	- %		Yes	

OTHER INFORMATION

Intrastat/Taric Code	1905
-----------------------------	------

CONTACT INFORMATION

Address
 Speciality Breads Ltd
 Unit J2 Channel Road
 Westwood Industrial Estate
 Margate
 Kent
 CT9 4JS
 England

P: (Phone) 01843 209442

The information on the [Erudus System](#) has been supplied by the manufacturers of the products and, whilst the owners of the Erudus System take steps to ensure the information is regularly updated, they give no warranty and no guarantee that the information is accurate. Product information and ingredients may change, please always read product labels carefully in addition to using the information provided by Erudus.

We do not accept liability for any inaccuracies or incorrect information contained on this site.
 Please visit <http://www.erudus.com/terms-and-conditions> for full terms and conditions.