

Changed Jan 24, 2024 10:12

Reviewed Jan 24, 2024 10:12

Erudus ID 639b361594124d1d9a03e5c6afe3be54

Version 2.0

Thomas Ridley
FOODSERVICE

RECEIVED
Thomas Ridley QC Dept.
12:25 pm, 24 Jan 2024

The food information supplied by Thomas Ridley Foodservice has been provided by the respective product manufacturer. Whilst we use reasonable endeavours to check this information and ensure its accuracy, we do not give any warranty (whether express or implied), guarantee or representation that it is true, accurate or complete in any respect.

As product information, ingredients, nutritional guides and dietary or allergy advice may change from time to time, we recommend that you always carefully read the product label prior to using or consuming any such products. You should not solely rely upon the information we provide and make your own assessment as to the suitability or otherwise of any given product.



Worcestershire Sauce 2x2g

Lea & Perrins Worcester Sauce (2) 2L

PRODUCT DESCRIPTION

Worcester sauce

Brand	H.J. Heinz
Manufacturer Product Code	76003280
Product Type	Food
Product Category	Condiments
Storage Type	Ambient
Erudus ID	639b361594124d1d9a03e5c6afe3be54
Specification Type	Generic



Inner Component GTIN	5000111014663
Outer Case GTIN	05000111616218



INGREDIENTS

Ingredient Declaration

Malt Vinegar (from **BARLEY**), Spirit Vinegar, Molasses, Sugar, Salt, **Anchovies, (FISH)** Tamarind Extract, Onions, Garlic, Spices, Flavourings

ALLERGENS

Product Contains:

Celery/Celery	No	Mustard	No
Cereals Containing Gluten	Yes	Nuts (Tree)	No
Barley	Yes	Almond nuts	No
Oats	No	Brazil nuts	No
Rye	No	Cashew nuts	No
Wheat (including Spelt and Khorasan)	No	Hazelnuts	No
Crustacea	No	Macadamia (Queensland) nuts	No
Eggs	No	Pecan nuts	No
Fish	Yes	Pistachio nuts	No
Lupin	No	Walnuts	No
Milk	No	Peanuts	No
Molluscs	No	Sesame Seeds	No
		Soybeans	No
		Sulphur Dioxide and Sulphites	No
Palm Oil	No	Alcoholic Strength %Vol (ABV)	0 % Vol
Hydrogenated Vegetable Oil/Fat	No		
GM Protein/DNA	No		

SUPPLEMENTARY INGREDIENT INFORMATION

ADDITIVES

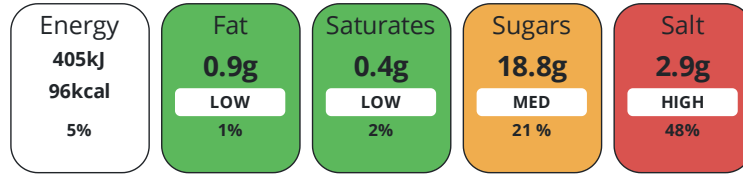
Product Contains:

Artificial Antioxidants	No	Artificial Flavourings	Yes
Artificial Colours	No	Artificial Preservatives	No
Artificial Flavour Enhancers	No	Artificial Sweeteners	No
Vegan Diet	No	Vegetarian Diet	No
Halal Diet	Suitable for	Kosher Diet	Suitable for

DIET SUITABILITY

NUTRITIONAL INFORMATION

Each 100g/ml portion contains:



of your reference intake.

Typical values per 100g/ml : Energy 96kcal / 405kj

Nutrient	per 100ml	RI per 100ml	per 5ml serving	RI per 5ml serving
Energy (kj)	405 kj	5%	20.3 kj	0%
Energy (kcal)	96 kcal	5%	4.8 kcal	0%
Fat	0.9 g	1%	-	
of which Saturates	0.4 g	2%	-	
Carbohydrate	21 g	8%	1.1 g	0%
of which Sugars	18.8 g	21%	0.9 g	1%
Protein	0.8 g	2%	-	
Salt	2.9 g	48%	0.1 g	2%
Sodium	1160 mg		58 mg	

Serving Size 5 ml

SUPPLEMENTARY NUTRITIONAL INFORMATION

HANDLING & STORAGE INFORMATION

Directions For Use

Ready to use sauce

Storage Instructions

Store at ambient temperature to BBE date

Shelf Life from Time of Production	547 Days	Exempt From Shelf Life Labelling	Yes
---	----------	---	-----

ACCREDITATIONS/ CERTIFICATIONS/ ASSURANCE SCHEMES



Other Accreditation

n/a

ORIGIN

Product Country of Origin/Place of United Kingdom

Provenance

Additional Origin Details

n/a

PRODUCT CHARACTERISTICS

Standards Testing

	Do you undertake trend analysis of microbiological results?	No	Is shelf life testing undertaken?	No			
CONFIGURATION	Case Configuration		Inner Pack Configuration				
	Total Quantity of Inner Components in Outer Case	2 Units					
	Is the Outer Case Splittable?	No					
PRODUCT WEIGHTS	Inner Component						
	Variable Weight Consumer Item	No					
	Inner Component Weight	2 g					
	Outer Case						
	Outer Case Gross Weight	4.9 kg					
	Outer Case Net Weight	4.51 kg					
PRODUCT DIMENSIONS	Inner Component						
	Inner Component Depth	127 mm					
	Inner Component Width	104 mm					
	Inner Component Height	252 mm					
	Outer Case						
	Outer Case Depth	266 mm					
	Outer Case Width	114 mm					
	Outer Case Height	263 mm					
PALLET INFORMATION	Quantity of Cases Per Pallet Layer	38 Cases	Pallet Height	1.3 MTR			
	Quantity of Layers Per Pallet	5 Layers	Pallet Gross Weight	919.68 kg			
	Quantity of Cases Per Pallet	190 Cases					
PACKAGING	Inner Component Packaging						
	Type	Materials	Weight	Recycled Plastic %	Recyclable	Returnable	Composite
	Bottle	Plastic	1 g	- %			
	Bottle	Paper/Cardboard	124 g	- %			
	Outer Case Packaging						
	Type	Materials	Weight	Recycled Plastic %	Recyclable	Returnable	Composite
	Case	Plastic	1 g	- %			
	Case	Paper/Cardboard	124 g	- %			
	Transport Packaging						
	Type	Materials	Weight	Recycled Plastic %	Recyclable	Returnable	Composite
	Other	Plastic	500 g	- %			
	Other	Paper/Cardboard	1741 g	- %			
	Other	Wood	25000 g	- %			
OTHER INFORMATION	Manufacturer Comments	n/a					

CONTACT
INFORMATION

Address

H.J. Heinz
The Shard
32 London Bridge Street
London
SE1 9SG
England

P: (Phone) 02037 650500

The information on the [Erudus System](#) has been supplied by the manufacturers of the products and, whilst the owners of the Erudus System take steps to ensure the information is regularly updated, they give no warranty and no guarantee that the information is accurate. Product information and ingredients may change, please always read product labels carefully in addition to using the information provided by Erudus.

We do not accept liability for any inaccuracies or incorrect information contained on this site.
Please visit <http://www.erudus.com/terms-and-conditions> for full terms and conditions.