

**RECEIVED**  
Thomas Ridley QC Dept.  
8:29 am, 10 Jul 2023

The food information supplied by Thomas Ridley Foodservice has been provided by the respective product manufacturer. Whilst we use reasonable endeavours to check this information and ensure its accuracy, we do not give any warranty (whether express or implied), guarantee or representation that it is true, accurate or complete in any respect.

As product information, ingredients, nutritional guides and dietary or allergy advice may change from time to time, we recommend that you always carefully read the product label prior to using or consuming any such products. You should not solely rely upon the information we provide and make your own assessment as to the suitability or otherwise of any given product.

## Cadbury Instant Hot Chocolate 2kg



**EAN**  
5034660022237

**Target market(s)**  
GB, IE

### Components

#### Ingredients

- Sugar
- Fat-Reduced Cocoa Powder (15 %)
- Whey Powder (from **MILK**)
- Glucose Syrup
- Skimmed **MILK** Powder
- Palm Oil
- Soluble Maize Fibre
- MILK** Chocolate (3.5%) (**MILK**, Sugar, Cocoa Butter, Cocoa Mass, Vegetable Fats (Palm, Shea), Emulsifier (E442), Flavourings)
- Anti-Caking Agent (E551)
- Salt
- MILK** Protein
- Acidity Regulator (E501)
- Flavourings (contain **MILK**)
- Thickener (E407)
- Emulsifier (E471)

#### Nutrition

	Per 100 g	Per Serving	*Reference Intakes
Energy	1679 kJ 398 kcal	672 kJ 159 kcal	8400 kJ / 2000 kcal
Fat	7.5 g	3.0 g	70 g
of which Saturates	5.2 g	2.1 g	20 g
Carbohydrate	69 g	28 g	260 g
of which Sugars	61 g	24 g	90 g
Fibre	8.8 g	3.5 g	-
Protein	8.4 g	3.4 g	50 g
Salt	0.88 g	0.35 g	6 g

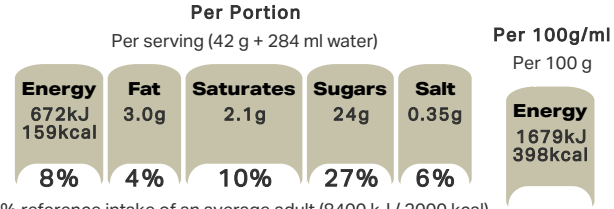
\*% reference intake of an average adult (8400 kJ / 2000 kcal)

#### Calculated Nutrition

**per 100g**   **Per Serving**

Energy (kJ)	1679	672
Energy (kcal)	398	159
Fat (g)	7.5	3
of which saturates (g)	5.2	2.1
Carbohydrate (g)	69	28
of which sugars (g)	61	24
Fibre (g)	8.8	3.5
Protein (g)	8.4	3.4
Salt (g)	0.88	0.35

#### Front of Pack Nutrition



% reference intake of an average adult (8400 kJ / 2000 kcal)

#### Nutrition Other Text

% reference intake of an average adult (8400 kJ / 2000 kcal)

#### Reference Intake Statement

Reference Intake Statement - % reference intake of an average adult (8400 kJ / 2000 kcal)

## Product Description

#### Alternative Description

Supplier Preferred Product Name - Cadbury Instant Hot Chocolate Large Tub 2Kg

#### Brand

Cadbury

#### Features

100% Sustainably Sourced Cocoa  
Suitable for vegetarians

#### Standardised Brand

Brand - Cadbury

#### Regulated Product Name

Instant hot chocolate drink.

## Marketing

### Company Name

Mondelez UK / Mondelez Ireland

### Company Address

Mondelez UK,  
PO Box 7008,  
Birmingham,  
B30 2PT.

Mondelez Ireland,  
Malahide Road,  
Coolock,  
Dublin 5.

### Product Marketing

Your very own hug in a mug. Deliciously silky and sweet – just add hot water to four heaped teaspoons of our instant hot chocolate, give it a good stir and you're ready to feel all warm inside. Why not whip one up for a friend, too? Made with sustainably sourced cocoa. Vegetarian friendly.

### Further Description

BeTreatwise.net

Cocoa Life  
Partnering with Fairtrade Foundation  
To improve the lives of cocoa farmers & our environment  
By eating Cadbury, you've been helping to fight deforestation  
Thanks to Cocoa Life we are helping farms to protect the forests around them  
WWW.COCOALIFE.ORG

## Health & Lifestyle

### Lifestyle

- Suitable for Vegetarians

### Allergy Advice

Milk - Contains

## Storage & Usage

### Storage Type

#### Type

Ambient

### Preparation and Usage

Preparation Instructions (with 284 ml (10 floz) hot water): Designed to be a super-quick and easy way to get that great Cadbury taste, simply put 6 heaped teaspoons of Cadbury Instant Hot Chocolate into a mug and stir in hot water.

### Storage

Store in a dry place. Protect from heat.  
For best before see base.

### Date Marking Type

- Best Before

## Brandbank Captured Pack Data

### Pack Size

2kg e

### Numeric Size

Numeric Size - 2

### Recycling Info

Can - Don't Recycle  
Lid - Recycle  
Seal - Recycle

### Pack Type

Type - Can

### Recycling Scheme

- OPRL

### Recycling Other Text

### Usage Count

Number of uses - Servings

47-48

### Usage Other Text

Approximately 47 - 48 servings per pack

## Customer Services

### Manufacturers Address

Mondelez UK,  
PO Box 7008,  
Birmingham,  
B30 2PT.

Mondelez Ireland,  
Malahide Road,  
Coolock,  
Dublin 5.

### Return To

We are passionate about our great quality Cadbury products. Not completely satisfied? Please contact us: Freephone 0800 818181 (UK only).  
Mondelez UK,  
PO Box 7008,  
Birmingham,  
B30 2PT.

Mondelez Ireland,  
Freephone 1-800 678708  
Malahide Road,  
Coolock,  
Dublin 5.  
[www.cadbury.co.uk](http://www.cadbury.co.uk)

### Telephone Helpline

0800 818181 (UK)  
1-800 678708

### Fax Number

### Email Helpline

### Web Address

[www.cadbury.co.uk](http://www.cadbury.co.uk)

## Extended Data

### Description Breakdown

Functional Name - Hot Chocolate  
Variant - Instant

### SEO Metatag

Hot Chocolate, Drinking Chocolate, Cadbury Hot Chocolate, Cocoa Powder, Milk Chocolate, Dairy Milk, Best Way To Make Hot Chocolate, Cadbury Cocoa Powder, Hot Chocolate Powder, Instant Hot Chocolate