

Schweppes Lemonade 330ml



EAN
5000193700515

Target market(s)
GB

Components

Ingredients

Carbonated Water
Sugar
Lemon Juice from Concentrate (2%)
Citric Acid
Flavourings
Acidity Regulator (Sodium Citrate)
Sweeteners (Aspartame, Sodium Saccharin)
Preservative (Potassium Sorbate)
Antioxidant (Ascorbic Acid)

Nutrition

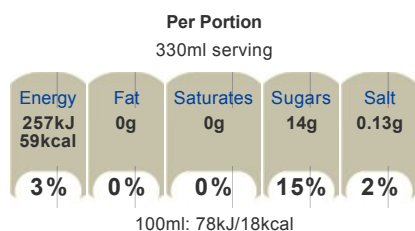
	Per: 100ml	Per: 330ml (%*)
Energy:	78kJ/ 18kcal	257kJ/ 59kcal (3%)
Fat:	0g	0g (0%)
of which saturates:	0g	0g (0%)
Carbohydrate:	4.2g	14g (5%)
of which sugars:	4.2g	14g (15%)
Protein:	0g	0g (0%)
Salt:	0.04g	0.13g (2%)

*Reference intake of an average adult (8400kJ/2000kcal)

Calculated Nutrition

	per 100ml	Per: 330ml (%*)
Energy (kJ)	78	257
Energy (kcal)	18	59
Fat (g)	0	0
of which saturates (g)	0	0
Carbohydrate (g)	4.2	14
of which sugars (g)	4.2	14
Protein (g)	0	0
Salt (g)	0.04	0.13

Front of Pack Nutrition



Reference intake of an average adult (8400kJ/2000kcal)

Product Description

Brand

Schweppes

Standardised Brand

Brand - Schweppes

Regulated Product Name

Sparkling Lemon Flavour Soft Drink with Sugar and Sweeteners

Marketing

Company Name

Coca-Cola Enterprises Ltd

Company Address

Uxbridge,
UB8 1EZ.

Product Marketing

Original Lemonade masterfully made with Lemon Juice

Made with real lemons
With Sugar and Sweeteners

Serve cold for maximum refreshment.

Store in a cool and dry place

Please recycle.

Brand Marketing

Coca-Cola and the Environment

Coca-Cola is committed to making a positive difference - to the health of the planet, consumers and the communities it serves. The company is working hard to reduce its impact on the environment in everything it does - growing more while using less in areas such as energy and water use, waste reduction and recycling - and by encouraging people to think more about the positive impact they can have on their local environment.

Manufacturer Marketing

By Appointment to Her Majesty Queen Elizabeth II Schweppes Holdings Ltd Manufacturers of Schweppes and roses soft drinks.

Other Information

Contains a source of Phenylalanine.

Further Description

We've been making Schweppes lemonade since 1835, using real lemons and adding our Schwebpevescence for a lemony zing.

These cans are the perfects serve if you're feeling selfish and want a Schweppes Lemonade all to yourself...

The Nation's Favourite Lemonade Brand. Recommended by the makers of Pimms.

Trademark Information

© 2013 Atlantic Industries

Health & Lifestyle

Lifestyle

- No Added Sugar

Storage & Usage

Storage Type

Type
Ambient

Preparation and Usage

Best served chilled

Storage

Store cool and dry.

Best before end: see base of can for date.

Brandbank Captured Pack Data

Pack Size

330ml e

Numeric Size

Numeric Size - 330

Pack Type

Type - Can

Customer Services

Manufacturers Address

Coca-Cola Enterprises Ltd,
Uxbridge,
UB8 1EZ.

Return To

Coca-Cola Enterprises Ltd,
Uxbridge,
UB8 1EZ.
0800 227711
Coca-Cola.co.uk

Telephone Helpline

0800 227711

Web Address

Coca-Cola.co.uk

Extended Data

Languages On Pack

- English

Description Breakdown

Variant - Lemonade




**Sparkling Lemon Flavour Soft Drink
with Sugar and Sweeteners**

INGREDIENTS

Carbonated Water, Sugar, Lemon Juice from Concentrate (2%), Citric Acid, Flavourings, Acidity Regulator (Sodium Citrate), Sweeteners (Aspartame, Sodium Saccharin), Preservative (Potassium Sorbate), Antioxidant (Ascorbic Acid).

WARNING STATEMENT


Contains a Source of Phenylalanine.



NUTRITION INFORMATION TYPICAL VALUES

Per:	100ml	330ml (2*)
Energy:	78kJ / 18kcal	257kJ / 59kcal (32)
Fat:	0g	0g (0%)
of which saturates:	0g	0g (0%)
Carbohydrate:	4.2g	14g (5%)
of which sugars:	4.2g	14g (15%)
Protein:	0g	0g (0%)
Salt:	0.04g	0.13g (2%)

* Reference intake of an average adult (8400kJ/2000kcal)

330ml 

Energy	Fat	Saturates	Sugars	Salt
257kJ / 59kcal	0g	0g	14g	0.13g
3%	0%	0%	15%	2%

100ml: 78kJ / 18kcal