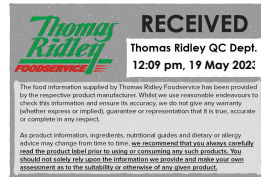


Supplier's Product Code :
Product Added :
Last Updated by Supplier :
erudus id :

MF021
07 November 2019
13 May 2022
8f6e46854f754d998528337915d9c69c



The information on the Erudus System has been supplied by the manufacturers of the products and, whilst the owners of the Erudus System take steps to ensure the information is regularly updated, they give no warranty and no guarantee that the information is accurate. Product information and ingredients may change, please always read product labels carefully in addition to using the information provided by Erudus One.

We do not accept liability for any inaccuracies or incorrect information contained on this site. Please visit <http://www.erudus.com/terms-and-conditions> for full terms and conditions.

Macphie Creme Brulee (12 x 1L)

Short Product Name:
Creme Brulee

Product Description:
A smooth, ready to use UHT product, which on heating and subsequent cooling, sets to give a delicious, rich creme brulee.

General Information

Food/Drink :	Food
Product Category :	Ambient
Generic Product Type :	Desserts

Supplier's Product Code :
MF021
Supplier: R.H Amar & Co Ltd
Turnpike Way

High Wycombe
Bucks
HP12 3TF
England
P: +44 (0) 1494 530 200

OUTER PRODUCT

Outer case Information

Outer Case GTIN :	Not specified.	Outer Case Length :	208 mm
Packaging Type Description :	Case	Outer Case Width :	402 mm
Total Quantity of Inner Units in Outer Case :	12 Units	Outer Case Height :	170 mm
Is Trade Item Splittable? :	Yes	Product Gross Weight :	14.38 kg
		Product Net Weight :	13.96 kg

Pallet Information

Quantity of Cases Per Pallet Layer :	15 Cases	Pallet Height :	1.05 MTR
Quantity of Layers Per Pallet :	5 Layers	Pallet Gross Weight :	1,106.00 kg
Quantity of Cases Per Pallet :	75 Cases		

Logistical Information

Shelf Life from Time of Production :	183 Days	Minimum Order Quantity :	Not specified.
Guaranteed Shelf Life on Delivery :	137 Days	Delivery Lead Time :	5 Days

Waste Packaging Weight - Outer Case

Glass :	0.00 g	Aluminium :	0.00 g
Plastic :	51.00 g	Steel :	0.00 g
Percentage Recycled Plastic :	Not specified.	Other :	0.00 g
Paper/Board :	65.00 g		

Waste Packaging Weight - Transport Packaging

Plastic :	Not specified.	Wood Total :	Not specified.
Paper/Board :	Not specified.	Is Pallet Returnable? :	-
Percentage Recycled Plastic :	Not specified.		

Other Information

Supplier Comments:
Barcode: 05017506119056

INNER PRODUCT

Origin Information

Product Country of Origin/Place of Provenance :	United Kingdom
---	----------------

Additional Origin Details :
Not specified.

Inner Pack Information

Internal GTIN :	5017506119254
-----------------	---------------

Packaging Type Description :	Tetra Pack
------------------------------	------------

Variable Weight Consumer Item :	No
---------------------------------	----

Net Drained Weight :	Not specified.
----------------------	----------------

Inner Unit Length :	94 mm
---------------------	-------

Inner Unit Height :	166 mm
---------------------	--------

Inner Unit Width :	63 mm
--------------------	-------

Inner Product Weight :	Not specified.
------------------------	----------------

Inner Product Weight Units :	g
------------------------------	---

Weight/Volume :
1L

Handling Information

Directions For Use :
Use as per instructions.

Storage Instructions :
Store in a cool, dry place. Once opened, refrigerate and consume within 7 days.

Dietary Information

Ingredients :

Reconstituted Skimmed MILK, water, sugar, vegetable oil, whey protein concentrate (MILK), modified starch, butter (MILK), Reconstituted EGG yolk, stabiliser: gellan gum, flavouring, emulsifier: mono- and diglycerides of fatty acids, salt, colour: beta-carotene.

Product contains:

GM Protein/DNA :	No
Celery/Celeriac (and products thereof) :	No
Lupin (and products thereof) :	No
Eggs (and products thereof) :	Yes
Fish (and products thereof) :	No
Soybeans (and products thereof) :	No
Milk (and products thereof) :	Yes
Mustard (and products thereof) :	No
Peanuts (and products thereof) :	No
Sesame Seeds (and products thereof) :	No
Crustacea (and products thereof) :	No
Molluscs (and products thereof) :	No
Nuts (and products thereof) :	No
Almond nuts :	No
Hazelnuts :	No
Walnuts :	No
Cashew nuts :	No
Pecan nuts :	No
Brazil nuts :	No
Pistachio nuts :	No
Macadamia nuts :	No
Queensland nuts :	No
Cereals Containing Gluten :	No
Wheat (and products thereof) :	No
Rye (and products thereof) :	No
Barley (and products thereof) :	No
Oats (and products thereof) :	No
Spelt (and products thereof) :	No
Kamut (and products thereof) :	No
Gluten content <20ppm :	Yes
Hydrogenated Vegetable Oil/Fat :	No
Palm Oil :	Yes
Sulphur Dioxide and Sulphites :	No
Sulphur Dioxide/Sulphites Concentration :	0

Product contains :

Artificial Antioxidants :	No
Artificial Colours :	No
Artificial Flavourings :	No
Artificial Flavour Enhancers :	No
Artificial Preservatives :	No
Artificial Sweeteners :	No

Product suitability:

Suitable for a Vegetarian Diet :	Yes
Suitable for a Vegan Diet :	No
Suitable for Sufferers of Lactose Intolerance :	No
Suitable for Coeliacs :	Yes
Approved for a Halal Diet :	No
Approved for a Kosher Diet :	No
HFSS (High in Fat, Salt and Sugar) :	-

Allergen Statement :

Not specified.

Nutritional Information

Average Serving :	Not specified.
Count per 100g :	Not specified.
Count Per Pack :	Not specified.
Energy per 100 G/ML :	753.00 kJ
Energy per 100 G/ML :	180.00 kcal
Fat per 100 G/ML :	11 g
- of which Saturates per 100 G/ML :	6.3 g
- of which Mono-unsaturates per 100 G/ML :	Not specified.
- of which Polyunsaturates per 100 G/ML :	Not specified.
Trans Fats per 100 G\ML :	Not specified.
Carbohydrate Per 100 G/ML :	17 g
- of which Sugars per 100 G/ML :	15 g
- of which Polyols per 100 G/ML :	Not specified.
- of which Starch per 100 G/ML :	Not specified.
Fibre per 100 G/ML :	Not specified.
Protein per 100 G/ML :	2.2 g
Salt per 100 G/ML :	0.2 g
Sodium per 100 G\ML :	Not specified.

Vitamin A per 100g :	Not specified.
Vitamin C per 100g :	Not specified.
Folate/Folic Acid per 100g :	Not specified.
Calcium per 100g :	Not specified.
Iron per 100g :	Not specified.
Zinc per 100g :	Not specified.
Cholesterol per 100 G/ML (UK/FR) :	Not specified.
Non Milk Extrinsic Sugars per 100gm :	Not specified.
Alcoholic Strength %Vol :	Not specified.
Fat Percentage in Dry Matter per 100g :	Not specified.

Waste Packaging Weight - Inner Unit

Glass :	0.00 g
Plastic :	4.50 g
Percentage Recycled Plastic :	Not specified.
Paper/Board :	21.00 g

Aluminium :	1.30 g
Steel :	0.00 g
Other :	0.00 g

Accreditations / Certifications / Assurance Schemes

BRCGS Certified Production :	Yes
Red Tractor :	No
Fairtrade :	No
Marine Stewardship Council Certified (MSC) :	No
Organic :	No
SALSA (Safe & Local Supplier Approval) :	No
British Lion Mark :	No
RSPCA Assured :	No
LEAF Marque (Linking Environment and Farming) :	No
Rainforest Alliance :	No
Food for Life Supplier Scheme :	No
Quality Meat Scotland :	No
Farm Assured Welsh Livestock :	No
Northern Ireland Beef & Lamb Farm Quality Assurance Scheme :	No
Quality Standard Mark (Beef/Lamb) :	No
Roundtable of Sustainable Palm Oil (RSPO) :	Yes
School Approved (The Requirement for School Food Regulation 2014) :	No
IFS Food Standard :	No
Best Aquaculture Practices (BAP) Certification :	No
ISO 14001 (Environmental System) :	No
FSSC 22000 :	No

Other Accreditation :	Not specified.
Intra Stat/Taric Code :	Not specified.
Commodity Code :	Not specified.
Identification/Health Marks :	Not specified.

Standards Testing

Do you undertake trend analysis of microbiological results? : No

Is shelf life testing undertaken? : No

Microbiological Standards

Not available.

Analytical Standards

Test	Frequency	Target	Range	Sample (g or ml)	Note
pH	Every Batch	=6.7	6.4 to 7	-	