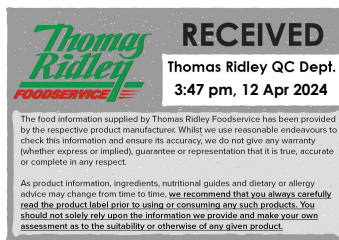


Changed Apr 12, 2024 08:10

Reviewed Apr 12, 2024 08:10

Erudus ID 6ecb5303e6cf4716a7975494557044c9

Version 2.0



39041

Heinz Tomato Ketchup SqueezeMe (100) 26ml

Tomato Ketchup 100x26ml

PRODUCT DESCRIPTION

Tomato ketchup

Brand	H.J. Heinz
Manufacturer Product Code	71349500
Product Type	Food
Product Category	Condiments
Storage Type	Ambient
Erudus ID	6ecb5303e6cf4716a7975494557044c9
Specification Type	Generic
Inner Component GTIN	50457427
Outer Case GTIN	05413226700008



INGREDIENTS

Ingredient Declaration

Tomatoes (148g per 100g tomato ketchup), vinegar, sugar, salt, spice and herb extracts (contain CELERY), spice

ALLERGENS

Product Contains:

Celery/Celeriac	Yes	Mustard	No
Cereals Containing Gluten	No	Nuts (Tree)	No
Barley	No	Almond nuts	No
Oats	No	Brazil nuts	No
Rye	No	Cashew nuts	No
Wheat (including Spelt and Khorasan)	No	Hazelnuts	No
Crustacea	No	Macadamia (Queensland) nuts	No
Eggs	No	Pecan nuts	No
Fish	No	Pistachio nuts	No
Lupin	No	Walnuts	No
Milk	No	Peanuts	No
Molluscs	No	Sesame Seeds	No
		Soybeans	No
		Sulphur Dioxide and Sulphites	No

SUPPLEMENTARY INGREDIENT INFORMATION

Palm Oil	No
Hydrogenated Vegetable Oil/Fat	No
GM Protein/DNA	No

ADDITIVES

Product Contains:

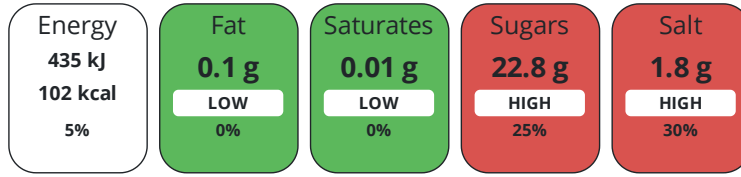
Artificial Antioxidants	No	Artificial Flavourings	No
Artificial Colours	No	Artificial Preservatives	No
Artificial Flavour Enhancers	No	Artificial Sweeteners	No

DIET
SUITABILITY

Vegan Diet	No	Vegetarian Diet	Suitable for
Halal Diet	No	Kosher Diet	No

NUTRITIONAL
INFORMATION

Each 100g/ml portion contains:



of your reference intake.

Typical values per 100g/ml : Energy 102kcal / 435kj

Nutrient	per 100g	RI per 100g	per 26g serving	RI per 26g serving
Energy (kJ)	435 kJ	5%	113.1 kJ	1%
Energy (kcal)	102 kcal	5%	26.5 kcal	1%
Fat	0.1 g	0%	-	
of which Saturates	0.01 g	0%	-	
Carbohydrate	23.2 g	9%	6 g	2%
of which Sugars	22.8 g	25%	5.9 g	7%
Protein	1.2 g	2%	0.3 g	1%
Salt	1.8 g	30%	0.5 g	8%
Sodium	720 mg		187.2 mg	

Serving Size 26 g

SUPPLEMENTARY
NUTRITIONAL
INFORMATION

HANDLING &
STORAGE
INFORMATION

Directions For Use

Ready to use condiment for immediate use only

Storage Instructions

Ambient

Shelf Life from Time of Production 270 Days **Exempt From Shelf Life Labelling** No

ACCREDITATIONS/
CERTIFICATIONS/
ASSURANCE
SCHEMES
ORIGIN

BRCGS Certified **Other Accreditation**

Product Country of Origin/Place of United Kingdom

Provenance

Additional Origin Details

confidential

PRODUCT
CHARACTERISTICS
CONFIGURATION

Standards Testing

Case Configuration

Inner Pack Configuration

Total Quantity of Inner Components in 100 Units

Outer Case

Is the Outer Case Splittable? No

PRODUCT WEIGHTS

Inner Component	
Variable Weight Consumer Item	No
Inner Component Volume	26 ml
Outer Case	
Outer Case Gross Weight	3.4 kg
Outer Case Net Weight	3 kg

PRODUCT DIMENSIONS

Inner Component	
Inner Component Depth	20 mm
Inner Component Width	50 mm
Inner Component Height	70 mm
Outer Case	
Outer Case Depth	389 mm
Outer Case Width	289 mm
Outer Case Height	83 mm

PALLET INFORMATION

Quantity of Cases Per Pallet Layer	10 Cases	Pallet Height	0 MTR
Quantity of Layers Per Pallet	16 Layers		
Quantity of Cases Per Pallet	160 Cases		

PACKAGING

Inner Component Packaging						
Type	Materials	Weight	Recycled Plastic %	Recyclable	Returnable	Composite
Sachet	Plastic	1.4 g	- %			
Outer Case Packaging						
Type	Materials	Weight	Recycled Plastic %	Recyclable	Returnable	Composite
Case	Paper/Cardboard	280 g	- %			
Transport Packaging						
Type	Materials	Weight	Recycled Plastic %	Recyclable	Returnable	Composite
Other	Plastic	500 g	- %			

OTHER INFORMATION

Manufacturer Comments
n/a

CONTACT INFORMATION

Address
H.J. Heinz
The Shard
32 London Bridge Street
London
SE1 9SG
England

P: (Phone) 02037 650500

The information on the [Erudus System](#) has been supplied by the manufacturers of the products and, whilst the owners of the Erudus System take steps to ensure the information is regularly updated, they give no warranty and no guarantee that the information is accurate. Product information and ingredients may change, please always read product labels carefully in addition to using the information provided by Erudus.

We do not accept liability for any inaccuracies or incorrect information contained on this site.
Please visit <http://www.erudus.com/terms-and-conditions> for full terms and conditions.