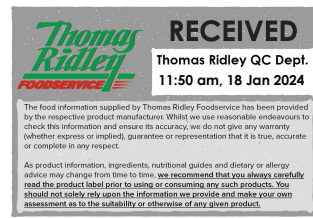


Changed Jan 17, 2024 13:35

Reviewed Jan 17, 2024 13:35

Erudus ID ef391c75980a4dea9f2497f8df7da854

Version 2.0



# Corned Beef Sliced

Corned Beef Sliced 500g

## PRODUCT DESCRIPTION

Sliced Corned Beef made from beef carcass

<b>Brand</b>	Kings Fine Cooked Meats
<b>Manufacturer Product Code</b>	CORNT500
<b>Product Type</b>	Food
<b>Product Category</b>	Canned Meat Products
<b>Storage Type</b>	Chilled
<b>Erudus ID</b>	ef391c75980a4dea9f2497f8df7da854
<b>Specification Type</b>	Meat
<b>Inner Component GTIN</b>	5060388581046
<b>Inner Pack GTIN</b>	5060388581046
<b>Outer Case GTIN</b>	05060388581053

## INGREDIENTS

### Ingredient Declaration

Cooked Beef, Beef, Salt, Sugar, Preservative (Sodium Nitrite)

## ALLERGENS

Product Contains:

<b>Celery/Celeriac</b>	No	<b>Mustard</b>	No
<b>Cereals Containing Gluten</b>	No	<b>Nuts (Tree)</b>	No
<b>Barley</b>	No	<b>Almond nuts</b>	No
<b>Oats</b>	No	<b>Brazil nuts</b>	No
<b>Rye</b>	No	<b>Cashew nuts</b>	No
<b>Wheat (including Spelt and Khorasan)</b>	No	<b>Hazelnuts</b>	No
<b>Crustacea</b>	No	<b>Macadamia (Queensland) nuts</b>	No
<b>Eggs</b>	No	<b>Pecan nuts</b>	No
<b>Fish</b>	No	<b>Pistachio nuts</b>	No
<b>Lupin</b>	No	<b>Walnuts</b>	No
<b>Milk</b>	No	<b>Peanuts</b>	No
<b>Molluscs</b>	No	<b>Sesame Seeds</b>	No
		<b>Soybeans</b>	No
		<b>Sulphur Dioxide and Sulphites</b>	No

## SUPPLEMENTARY INGREDIENT INFORMATION

<b>Palm Oil</b>	No
<b>Hydrogenated Vegetable Oil/Fat</b>	No
<b>GM Protein/DNA</b>	No

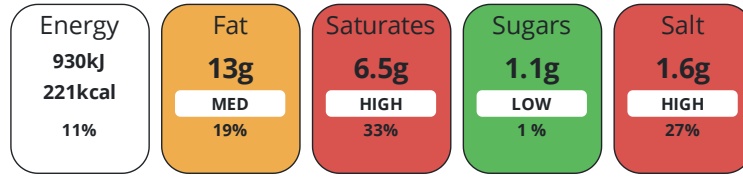
## ADDITIVES

Product Contains:

<b>Artificial Antioxidants</b>	No	<b>Artificial Flavourings</b>	No
<b>Artificial Colours</b>	No	<b>Artificial Preservatives</b>	Yes
<b>Artificial Flavour Enhancers</b>	No	<b>Artificial Sweeteners</b>	No
<b>Halal Diet</b>	No	<b>Kosher Diet</b>	No

## DIET SUITABILITY

Each 100g/ml portion contains:



of your reference intake.

Typical values per 100g/ml : Energy 221kcal / 930kj

Nutrient	per 100g	RI per 100g	per 50g serving	RI per 50g serving
<b>Energy (kJ)</b>	930 kJ	11%	465 kJ	6%
<b>Energy (kcal)</b>	221 kcal	11%	110.5 kcal	6%
<b>Fat</b>	13 g	19%	6.5 g	9%
<b>of which Saturates</b>	6.5 g	33%	3.3 g	17%
<b>Carbohydrate</b>	1.1 g	0%	0.6 g	0%
<b>of which Sugars</b>	1.1 g	1%	0.6 g	1%
<b>of which Polyols</b>	0 g		-	
<b>of which Starch</b>	0 g		-	
<b>Fibre</b>	< 0.5 g		0.3 g	
<b>Protein</b>	25 g	50%	12.5 g	25%
<b>Salt</b>	1.6 g	27%	0.8 g	13%

<b>Serving Size</b>	50 g
<b>Number of Servings</b>	10 Servings

**Source of Nutritional Information**      Manufacturers analysis

SUPPLEMENTARY  
NUTRITIONAL  
INFORMATION

HFSS (HIGH IN  
FAT, SALT AND  
SUGAR)  
HANDLING &  
STORAGE  
INFORMATION

**HFSS Status**      2

**Directions For Use**

Product is ready to eat.

**Storage Instructions**

Keep refrigerated at 0-5°C. Use within 3 days of opening.

**Storage Instructions After Opening**

Keep refrigerated at 0-5°C. Use within 3 days of opening.

<b>Shelf Life from Time of Production</b>	25 Days	<b>Exempt From Shelf Life Labelling</b>	No
<b>Shelf Life From Opening</b>	3 Days		

ACCREDITATIONS/  
CERTIFICATIONS/  
ASSURANCE  
SCHEMES



ORIGIN

**Product Country of Origin/Place of**      Brazil

**Provenance**

PRODUCT  
CHARACTERISTICS

Standards Testing

	<b>Do you undertake trend analysis of microbiological results?</b>	Yes	<b>Is shelf life testing undertaken?</b>	Yes			
	ORGANOLEPTICS						
	<b>Appearance</b>	The meat is a reddish-brown colour typical of cured beef products. Fat on the outside of the meat block should be a creamy white colour, though slight yellow discoloration is acceptable.					
	<b>Aroma</b>	Good, well balanced characteristic corned beef aroma. Characteristic cooked/processed cured meat aroma; free from undesirable aroma.					
	<b>Taste</b>	A good, well balanced characteristic corned beef flavour. Slight salty and fatty beefy flavours. Absence of rancid flavour. Slight metallic tone/aftertaste.					
	<b>Texture</b>	The meat is moist and yielding with a good bite; creamy melted fat texture. Firm texture, which breaks down easily in the mouth. Meat block should present elasticity when compressed with a fork.					
	HAZARD CONTROLS						
	<b>Metal Detection</b>	Yes					
CONFIGURATION	Case Configuration		Inner Pack Configuration				
	<b>Total Quantity of Inner Components in Outer Case</b>	15 Units					
	<b>Total Quantity of Inner Packs in Outer Case</b>	15 Units					
	<b>Is the Outer Case Splittable?</b>	Yes					
PRODUCT WEIGHTS	Inner Component		Inner Pack				
	<b>Variable Weight Consumer Item</b>	Yes	<b>Inner Pack Gross Weight</b>	524 g			
	<b>Inner Component Weight</b>	500 g	<b>Inner Pack Net Weight</b>	500 g			
	<b>Net Drained Weight</b>	500 g					
	<b>e mark</b>	Yes					
	Outer Case						
PRODUCT DIMENSIONS	<b>Outer Case Gross Weight</b>	7.92 kg					
	<b>Outer Case Net Weight</b>	7.5 kg					
	Inner Component		Inner Pack				
	<b>Inner Component Depth</b>	239 mm	<b>Inner Pack Depth</b>	239 mm			
	<b>Inner Component Width</b>	166 mm	<b>Inner Pack Width</b>	166 mm			
	<b>Inner Component Height</b>	37 mm	<b>Inner Pack Height</b>	37 mm			
	Outer Case						
	<b>Outer Case Depth</b>	385 mm					
	<b>Outer Case Width</b>	320 mm					
	<b>Outer Case Height</b>	200 mm					
PALLET INFORMATION	<b>Quantity of Cases Per Pallet Layer</b>	9 Cases	<b>Pallet Height</b>	1.86 MTR			
	<b>Quantity of Layers Per Pallet</b>	8 Layers	<b>Pallet Gross Weight</b>	540 kg			
	<b>Quantity of Cases Per Pallet</b>	72 Cases					
PACKAGING	Inner Pack Packaging						
	<b>Type</b>	<b>Materials</b>	<b>Weight</b>	<b>Recycled Plastic %</b>	<b>Recyclable</b>	<b>Returnable</b>	<b>Composite</b>
	Tray	Plastic	24 g	- %	No	No	

Outer Case Packaging

Type	Materials	Weight	Recycled Plastic %	Recyclable	Returnable	Composite
Case	Paper/Cardboard	420 g	- %	Yes	No	

Transport Packaging

Type	Materials	Weight	Recycled Plastic %	Recyclable	Returnable	Composite
Pallet	Wood	25000 g	- %	No	Yes	
Pallet Wrap	Plastic	325 g	- %	No	No	

OTHER INFORMATION

Identification/Health Marks

United Kingdom  
WG 025

CONTACT INFORMATION

Address  
Kings Fine Cooked Meats  
69 Queens Street  
Wigan  
Lancashire  
WN3 4HW  
United Kingdom

P: (Phone) 01942322398

The information on the [Erudus System](#) has been supplied by the manufacturers of the products and, whilst the owners of the Erudus System take steps to ensure the information is regularly updated, they give no warranty and no guarantee that the information is accurate. Product information and ingredients may change, please always read product labels carefully in addition to using the information provided by Erudus.

We do not accept liability for any inaccuracies or incorrect information contained on this site.  
Please visit <http://www.erudus.com/terms-and-conditions> for full terms and conditions.