

## Snickers 48g



### EAN

5000159551915

### Target market(s)

IE

## Components

### Ingredients

Sugar

Glucose Syrup

### Peanuts

Skimmed **Milk** Powder

Cocoa Butter

Cocoa Mass

Sunflower Oil

Palm Fat

Whey Permeate (**Milk**)

### Milk Fat

Salt

Emulsifier (**Soya** Lecithin)

### Egg White Powder

Milk Chocolate contains Milk Solids 14% minimum

Milk Chocolate contains Vegetable Fats in addition to Cocoa Butter

### Allergy Text

May contain: other **Nuts**.

### Nutrition

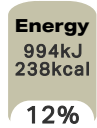
	/ 100 g	/ 48 g (%*)
Energy	2072kJ	994kJ (12%)
	495kcal	238kcal (12%)
Fat	25g	12g (17%)
of which saturates	8.4g	4.0g (20%)
Carbohydrate	58g	28g (11%)
of which sugars	49g	23g (26%)
Protein	9.1g	4.4g (9%)
Salt	0.53g	0.26g (4%)
*Reference intake of an average adult (8400 kJ/2000 kcal)		
Portions per pack: 1, Portion size: 48 g		

### Calculated Nutrition

	per 100g	/ 48 g
Energy (kJ)	2072	994
Energy (kcal)	495	238
Fat (g)	25	12
of which saturates (g)	8.4	4
Carbohydrate (g)	58	28
of which sugars (g)	49	23
Protein (g)	9.1	4.4
Salt (g)	0.53	0.26

#### Front of Pack Nutrition

**Per Portion**  
1 Snickers = 48 g



100g: 2072 kJ / 495 kcal

Reference intake of an average adult (8400 kJ/2000 kcal)

#### Nutrition Other Text

Reference intake of an average adult (8400 kJ/2000 kcal)

Portions per pack: 1, Portion size: 48 g

#### Reference Intake Statement

Reference Intake Statement - Reference intake of an average adult (8400 kJ/2000 kcal)

## Product Description

#### Brand

Snickers

#### Features

Free from Artificial Colours, Flavours & Preservatives  
Suitable for vegetarians

#### Standardised Brand

Brand - Snickers

#### Regulated Product Name

Milk chocolate (35%) with soft nougat (14%) and caramel centre (28%) with peanuts (22%).

## Marketing

#### Company Name

Mars Foods Ireland Ltd. / Mars Wrigley Confectionery UK Ltd.

#### Company Address

IE: Mars Foods Ireland Ltd.,  
PO Box 3856,  
Dublin 4.

GB: Freepost Mars Wrigley Confectionery UK Ltd.

#### Third Party Logos

- Green Dot
- Tidyman

#### Further Description

100% Responsibly Sourced Cocoa\*

\*100% Verified as responsibly sourced cocoa. We purchase a volume of responsibly sourced cocoa equivalent to the volume used in this product. Learn more at [www.mars.com/COCOA-EUROPE](http://www.mars.com/COCOA-EUROPE)

## Health & Lifestyle

### Lifestyle

- Suitable for Vegetarians

### Allergy Advice

Eggs - Contains  
Milk - Contains  
Nuts - May Contain  
Peanuts - Contains  
Soya - Contains

### Additives

Artificial Colours - Free From  
Artificial Flavours - Free From  
Artificial Preservatives - Free From

## Storage & Usage

### Storage Type

#### Type

Ambient

### Date Marking Type

- Best Before

## Brandbank Captured Pack Data

### Pack Size

48g e

### Numeric Size

Numeric Size - 48

### Recycling Info

Pack - Recycle with bags at large supermarket - Don't recycle at home

### Pack Type

Type - Wrap

### Recycling Scheme

- OPRL

### Usage Count

Number of uses - Servings

1

### Usage Other Text

Portions per pack: 1, Portion size: 48 g

## Customer Services

### Manufacturers Address

IE: Mars Foods Ireland Ltd.,  
PO Box 3856,  
Dublin 4.

GB: Freepost Mars Wrigley Confectionery UK Ltd.

### Return To

IE: Mars Foods Ireland Ltd.,  
PO Box 3856,  
Dublin 4.  
Contact us: <https://ire.mars.com/>  
1890 812 315

GB: Get in touch:  
0800 952 0077  
[www.mars.co.uk/contact](http://www.mars.co.uk/contact)  
Freepost Mars Wrigley Confectionery UK Ltd.

### Telephone Helpline

IE: 1890 812 315  
GB: 0800 952 0077

### Web Address

<https://ire.mars.com/>  
[www.mars.co.uk/contact](http://www.mars.co.uk/contact)



