


Changed Aug 30, 2024 11:37

Reviewed Aug 30, 2024 11:37

Erudus ID 1624b9dec9c64034adff6c4dc0877fe7

Version 3.0



RECEIVED
Thomas Ridley QC Dept.
12:56 pm, 2 Sep 2024

The food information supplied by Thomas Ridley Foodservice has been provided by the respective product manufacturers. Whilst we use reasonable endeavours to check this information and ensure its accuracy, we do not give any warranty (whether express or implied), guarantee or representation that it is true, accurate or complete in any respect.

As product information, ingredients, nutritional guides and dietary or allergy advice may change from time to time, we recommend that you always carefully read the product label prior to using or consuming any such products. You should not solely rely upon the information we provide and make your own assessment as to the suitability or otherwise of any given product.



41105

PHILADELPHIA CREAM CHEESE PLAIN 1.65KG 4CA

Philadelphia Cream Cheese Plain 1.65kg

PRODUCT DESCRIPTION

PHILADELPHIA CREAM CHEESE-SOFT PLAIN 1.65KG

Brand	Mondelez UK Ltd
Manufacturer Product Code	52638
Product Type	Food
Product Category	Other
Storage Type	Chilled
Erudus ID	1624b9dec9c64034adff6c4dc0877fe7
Specification Type	Generic



Inner Component GTIN	5000224026386
Outer Case GTIN	5000224126383



INGREDIENTS

Ingredient Declaration

Full fat soft CHEESE, salt, stabiliser (guar gum), acid (citric acid).

ALLERGENS

Product Contains:

Celery/Celериac	No	Mustard	No
Cereals Containing Gluten	No	Nuts (Tree)	No
Barley	No	Almond nuts	No
Oats	No	Brazil nuts	No
Rye	No	Cashew nuts	No
Wheat (including Spelt and Khorasan)	No	Hazelnuts	No
Crustacea	No	Macadamia (Queensland) nuts	No
Eggs	No	Pecan nuts	No
Fish	No	Pistachio nuts	No
Lupin	No	Walnuts	No
Milk	Yes	Peanuts	No
Molluscs	No	Sesame Seeds	No
		Soybeans	No
		Sulphur Dioxide and Sulphites	No

SUPPLEMENTARY INGREDIENT INFORMATION

Palm Oil	No
Hydrogenated Vegetable Oil/Fat	No
GM Protein/DNA	No

ADDITIVES

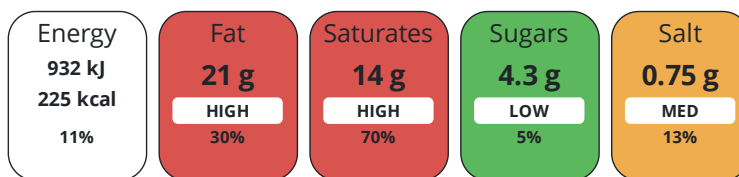
Product Contains:

DIET
SUITABILITY

Vegan Diet	No	Vegetarian Diet	Suitable for
Halal Diet	No	Kosher Diet	No

NUTRITIONAL
INFORMATION

Each 100g/ml portion contains:



of your reference intake.

Typical values per 100g/ml : Energy 225kcal / 932kJ

Nutrient	per 100g	RI per 100g
Energy (kJ)	932 kJ	11%
Energy (kcal)	225 kcal	11%
Fat	21 g	30%
of which Saturates	14 g	70%
Carbohydrate	4.3 g	2%
of which Sugars	4.3 g	5%
Fibre	0.2 g	
Protein	5.4 g	11%
Salt	0.75 g	13%

SUPPLEMENTARY
NUTRITIONAL
INFORMATION

HANDLING &
STORAGE
INFORMATION

Directions For Use

Ready To Eat

Storage Instructions

KEEP REFRIGERATED

Shelf Life from Time of Production 120 Days

Shelf Life From Opening 5 Days

ORIGIN

Product Country of Origin/Place of Germany

Provenance

Standards Testing

PRODUCT
CHARACTERISTICS

Do you undertake trend analysis of microbiological results?	No	Is shelf life testing undertaken?	No
--	----	--	----

CONFIGURATION

Case Configuration Inner Pack Configuration

Total Quantity of Inner Components in 4 Units

Outer Case

Is the Outer Case Splittable? No

PRODUCT WEIGHTS

Inner Component	
Variable Weight Consumer Item	Yes
Outer Case	
Outer Case Gross Weight	7.24 kg
Outer Case Net Weight	6.6 kg

PRODUCT DIMENSIONS

Inner Component	
Inner Component Depth	105 mm
Inner Component Width	185 mm
Inner Component Height	205 mm
Outer Case	
Outer Case Depth	399 mm
Outer Case Width	189 mm
Outer Case Height	210 mm

PALLET INFORMATION

Quantity of Cases Per Pallet Layer	15 Cases	Pallet Type	Euro Pallet
Quantity of Layers Per Pallet	6 Layers	Pallet Height	1.49 MTR
Quantity of Cases Per Pallet	90 Cases	Pallet Gross Weight	655.74 kg

PACKAGING

Inner Component Packaging						
Type	Materials	Weight	Recycled Plastic %	Recyclable	Returnable	Composite
Tub	Plastic	344 g	- %			
Tub	Aluminium	14.8 g	- %			
Outer Case Packaging						
Type	Materials	Weight	Recycled Plastic %	Recyclable	Returnable	Composite
Case	Plastic	3.25 g	- %			
Case	Paper/Cardboard	279 g	- %			

OTHER INFORMATION CONTACT INFORMATION

Address	Technical Contact
Mondelez UK Ltd	Tomas Sakalik
PO Box 12	Publication Expert
Bournville Lane	tomas.sakalik@mdlz.com
Bournville	
Birmingham	
B30 2LU	
England	
P. (Phone) +44 1214 582 000	

The information on the [Erudus System](#) has been supplied by the manufacturers of the products and, whilst the owners of the Erudus System take steps to ensure the information is regularly updated, they give no warranty and no guarantee that the information is accurate. Product information and ingredients may change, please always read product labels carefully in addition to using the information provided by Erudus.

We do not accept liability for any inaccuracies or incorrect information contained on this site. Please visit <http://www.erudus.com/terms-and-conditions> for full terms and conditions.