

## Schweppes Slimline Lemonade 2L



**EAN**  
5000193730574

**Target market(s)**  
GB

## Components

### Ingredients

Carbonated Water  
Lemon Juice from Concentrate (2%)  
Citric Acid  
Flavourings  
Acidity Regulator (Sodium Citrate)  
Sweeteners (Aspartame, Sodium Saccharin)  
Preservative (Potassium Sorbate)  
Antioxidant (Ascorbic Acid)

### Nutrition

	Per: 100ml	Per: 250ml (%*)
Energy:	7kJ/ 2kcal	17kJ/ 4kcal (0%)
Fat:	0g	0g (0%)
of which saturates:	0g	0g (0%)
Carbohydrate:	0g	0g (0%)
of which sugars:	0g	0g (0%)
Protein:	0g	0g (0%)
Salt:	0.03g	0.08g (1%)

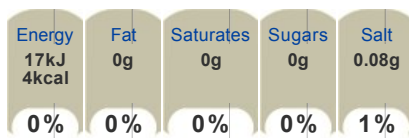
\* Reference intake of an average adult (8400kJ/2000kcal)

### Calculated Nutrition

	per 100ml	Per: 250ml
Energy (kJ)	7	17
Energy (kcal)	2	4
Fat (g)	0	0
of which saturates (g)	0	0
Carbohydrate (g)	0	0
of which sugars (g)	0	0
Protein (g)	0	0
Salt (g)	0.03	0.08

### Front of Pack Nutrition

Per Portion  
250ml servings



100ml: 7kJ/2kcal

Reference intake of an average adult (8400kJ/2000kcal)

## Product Description

### Brand

Schweppes

### Features

Masterfully made with lemon juice

### Standardised Brand

Brand - Schweppes

### Regulated Product Name

Sparkling Low Calorie Lemon Flavour Soft Drink with Sweeteners

## Marketing

### Company Name

Coca-Cola Enterprises Ltd

### Company Address

Uxbridge,  
UH8 1EZ.

### Product Marketing

'Original Diet Lemonade masterfully made with Lemon Juice'

Made with real lemons  
Low Calorie  
With Sweeteners

Serve cold for maximum refreshment.

Store in a cool and dry place

Please recycle.

### Brand Marketing

Coca-Cola and the Environment

Coca-Cola is committed to making a positive difference - to the health of the planet, consumers and the communities it serves. The company is working hard to reduce its impact on the environment in everything it does - growing more while using less in areas such as energy and water use, waste reduction and recycling - and by encouraging people to think more about the positive impact they can have on their local environment.

### Manufacturer Marketing

By Appointment to Her Majesty Queen Elizabeth II Schweppes Holdings Ltd Manufacturers of Schweppes and Roses Soft Drinks.

### Other Information

Bottled in GB under authority of Atlantic Industries

Contains a Source of Phenylalanine.

### Trademark Information

© 2013 Atlantic Industries

## Storage & Usage

### Storage Type

Type
Ambient

### Storage

Store cool and dry.

Best before end: See side of cap or bottle neck

## Brandbank Captured Pack Data

### Pack Size

2L e

### Numeric Size

Numeric Size - 2

### Recycling Info

Bottle - Plastic - Widely Recycled

### Pack Type

Type - Plastic Bottle

### Recycling Scheme

- OPRL

### Usage Count

Number of uses - Servings

8

### Usage Other Text

2L = 8 x 250ml servings

## Customer Services

### Manufacturers Address

Coca-Cola Enterprises Ltd,  
Uxbridge,  
UH8 1EZ.

### Return To

Coca-Cola Enterprises Ltd,  
Uxbridge,  
UH8 1EZ.  
0800 227711  
Coca-Cola.co.uk

### Telephone Helpline

0800 227711

### Web Address

Coca-Cola.co.uk

## Extended Data

### Languages On Pack

- English

### Description Breakdown

Functional Name - Lemonade  
Variant - Slimline

### Product Composition

Carbonated - Low Carbonated



**Sparkling Low Calorie Lemon Flavour Soft Drink with Sweeteners**

**INGREDIENTS**

Carbonated Water, Lemon Juice from Concentrate (2%), Citric Acid, Flavourings, Acidity Regulator (Sodium Citrate), Sweeteners (Aspartame, Sodium Saccharin), Preservative (Potassium Sorbate), Antioxidant (Ascorbic Acid).

**WARNING STATEMENT**

**Contains a Source of Phenylalanine.**



**NUTRITION INFORMATION TYPICAL VALUES**

Per:	100ml	250ml (2*)
Energy:	7kJ 2kcal	18kJ 5kcal (0%)
Fat:	0g	0g (0%)
of which saturates:	0g	0g (0%)
Carbohydrate:	0g	0g (0%)
of which sugars:	0g	0g (0%)
Protein:	0g	0g (0%)
Salt:	0.03g	0.08g (1%)

\* Reference intake of an average adult (8400kJ/2000kcal)

250ml

Energy	Fat	Saturates	Sugars	Salt
18kJ 5kcal	0g	0g	0g	0.08g
0%	0%	0%	0%	1%

100ml: 7kJ/2kcal