

Changed Jan 25, 2024 11:59

Reviewed Jan 25, 2024 11:59

Erudus ID 454beca27f5e476a93c5bc54c464f701

Version 2.0

**RECEIVED**  
 Thomas Ridley QC Dept.  
 12:51 pm, 25 Jan 2024

The food information supplied by Thomas Ridley Foodservice has been provided by the respective product manufacturer. Whilst we use reasonable endeavours to check this information and ensure its accuracy, we do not give any warranty (whether express or implied, guarantee or representation that it is true, accurate or complete in any respect.

As product information, ingredients, nutritional guides and dietary or allergy advice may change from time to time, we recommend that you always carefully read the product label prior to using or consuming any such products. You should not solely rely upon the information we provide and make your own assessment as to the suitability or otherwise of any given product.



# Alabama Chocolate Fudge Cake Pre-Portioned x 16

Alabama Chocolate Fudge Cake 1x16

## PRODUCT DESCRIPTION

A deliciously moist rich chocolate cake filled and covered with chocolate fudge icing before being hand decorated with a spiral swirl design. Pre-cut into 16 portions.

<b>Brand</b>	Mademoiselle Desserts (Taunton)
<b>Manufacturer Product Code</b>	F13850
<b>Product Type</b>	Food
<b>Product Category</b>	Desserts
<b>Storage Type</b>	Frozen
<b>Erudus ID</b>	454beca27f5e476a93c5bc54c464f701
<b>Specification Type</b>	Bakery Products



**Outer Case GTIN** 05010823516898



## INGREDIENTS

### Ingredient Declaration

Sugar, **WHEAT** Flour (**WHEAT** Flour, Calcium Carbonate, Iron, Niacin, Thiamin), Rapeseed Oil, **BUTTERMILK**, Fat Reduced Cocoa Powder (7.2%), Water, **EGG**, Dried Glucose Syrup, Palm Oil, **EGG** Yolk, Raising Agent (Sodium Bicarbonate), Emulsifiers (Mono- And Diglycerides Of Fatty Acids, Polyglycerol Esters Of Fatty Acids), Acidity Regulator (Potassium Hydroxide).

## ALLERGENS

Product Contains:

<b>Celery/Celery</b>	No
<b>Cereals Containing Gluten</b>	Yes
<b>Barley</b>	No
<b>Oats</b>	No
<b>Rye</b>	No
<b>Wheat (including Spelt and Khorasan)</b>	Yes
<b>Crustacea</b>	No
<b>Eggs</b>	Yes
<b>Fish</b>	No
<b>Lupin</b>	No
<b>Milk</b>	Yes
<b>Molluscs</b>	No

<b>Mustard</b>	No
<b>Nuts (Tree)</b>	May Contain
<b>Almond nuts</b>	May Contain
<b>Brazil nuts</b>	No
<b>Cashew nuts</b>	No
<b>Hazelnuts</b>	May Contain
<b>Macadamia (Queensland) nuts</b>	No
<b>Pecan nuts</b>	May Contain
<b>Pistachio nuts</b>	May Contain
<b>Walnuts</b>	May Contain
<b>Peanuts</b>	No
<b>Sesame Seeds</b>	No
<b>Soybeans</b>	No
<b>Sulphur Dioxide and Sulphites</b>	No

Risk Source:

<b>Tree Nuts (Risk Source)</b>	Factory
<b>Hazelnuts (Risk Source)</b>	Factory
<b>Pistachio nuts (Risk Source)</b>	Factory

<b>Almond nuts (Risk Source)</b>	Factory
<b>Pecan nuts (Risk Source)</b>	Factory
<b>Walnuts (Risk Source)</b>	Factory

### Allergen Statement On Pack

Allergens in the ingredients list (including cereals containing gluten) are shown in CAPITALS May contain traces of nuts. (Nuts are used in manufacturing and on packing lines so there is a small risk of cross contamination)

#### SUPPLEMENTARY INGREDIENT INFORMATION

<b>Palm Oil</b>	Yes
<b>Hydrogenated Vegetable Oil/Fat</b>	No
<b>GM Protein/DNA</b>	No

#### ADDITIVES

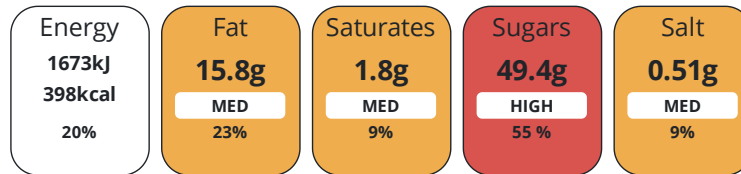
*Product Contains:*

<b>Artificial Antioxidants</b>	No	<b>Artificial Flavourings</b>	No
<b>Artificial Colours</b>	No	<b>Artificial Preservatives</b>	No
<b>Artificial Flavour Enhancers</b>	No	<b>Artificial Sweeteners</b>	No
<b>Vegan Diet</b>	No	<b>Vegetarian Diet</b>	Suitable for
<b>Halal Diet</b>	No	<b>Kosher Diet</b>	No

#### DIET SUITABILITY

#### NUTRITIONAL INFORMATION

Each 100g/ml portion contains:



of your reference intake.

Typical values per 100g/ml : Energy 398kcal / 1673kj

Nutrient	per 100g	RI per 100g	per 111g serving	RI per 111g serving
<b>Energy (kJ)</b>	1673 kJ	20%	1857 kJ	22%
<b>Energy (kcal)</b>	398 kcal	20%	441.8 kcal	22%
<b>Fat</b>	15.8 g	23%	17.5 g	25%
of which Saturates	1.8 g	9%	2 g	10%
of which Mono-unsaturates	8.9 g		9.9 g	
of which Polyunsaturates	4.3 g		4.8 g	
<b>Carbohydrate</b>	58.4 g	22%	64.8 g	25%
of which Sugars	49.4 g	55%	54.8 g	61%
of which Starch	9 g		10 g	
<b>Fibre</b>	2.6 g		2.9 g	
<b>Protein</b>	3.9 g	8%	4.3 g	9%
<b>Salt</b>	0.51 g	9%	0.6 g	10%
<b>Sodium</b>	200 mg		222 mg	

<b>Serving Size</b>	111 g
<b>Number of Servings</b>	16 Servings

**Source of Nutritional Information** Calculation from known/accepted datasets

#### SUPPLEMENTARY NUTRITIONAL INFORMATION

<b>Trans Fats per 100 g/ml</b>	0 g
--------------------------------	-----

#### HFSS (HIGH IN FAT, SALT AND SUGAR)

<b>HFSS Status</b>	1
<b>HFSS Score</b>	16

HANDLING & STORAGE INFORMATION

**Directions For Use**

DEFROSTING AND SERVING INSTRUCTIONS: For best results remove all packaging whilst gateau is still frozen and place on a serving plate. Defrost for approximately 8 hours or overnight in a refrigerator (5°C). Alternatively remove the required number of slices from frozen product and defrost each slice on a plate at (5°C) for minimum of 3 hours. Consume within 48 hours. Do not refreeze once defrosted.

**Storage Instructions**

Store at -18°C or colder.

<b>Shelf Life from Time of Production</b>	547 Days	<b>Exempt From Shelf Life Labelling</b>	No
<b>Shelf Life Once Defrosted</b>	2 Days		

ACCREDITATIONS/ CERTIFICATIONS/ ASSURANCE SCHEMES



**Other Accreditation**

N/A

ORIGIN

**Product Country of Origin/Place of** United Kingdom

**Provenance**

**Additional Origin Details**

Produced in the UK using ingredients from various origins

PRODUCT CHARACTERISTICS

Standards Testing

<b>Do you undertake trend analysis of microbiological results?</b>	Yes	<b>Is shelf life testing undertaken?</b>	Yes
--	-----	--	-----

Physical Standards

Test	Description	Frequency	Target	Range	Sample (g or ml)
Weight (g)	grams	Every Batch	=1788	1745 to 1831	111

SUPPLEMENTARY INFORMATION

CONFIGURATION

<b>Egg Source</b>	Free-range	<b>Fried During Manufacture</b>	No
<b>Case Configuration</b>		<b>Inner Pack Configuration</b>	
<b>Variable Inner Components in Outer Case</b>	No	<b>Count per Inner Component</b>	16
<b>Total Quantity of Inner Components in Outer Case</b>	1 Units		
<b>Is the Outer Case Splittable?</b>	No		

PRODUCT WEIGHTS

<b>Inner Component</b>	
<b>Variable Weight Consumer Item e mark</b>	No
<b>Outer Case</b>	
<b>Outer Case Gross Weight</b>	2 kg
<b>Outer Case Net Weight</b>	1.79 kg

PRODUCT DIMENSIONS

Inner Component	
<b>Inner Component Depth</b>	249 mm
<b>Inner Component Width</b>	249 mm
<b>Inner Component Height</b>	109 mm
Outer Case	
<b>Outer Case Depth</b>	249 mm
<b>Outer Case Width</b>	249 mm
<b>Outer Case Height</b>	109 mm

PALLET INFORMATION

<b>Quantity of Cases Per Pallet Layer</b>	16 Cases	<b>Pallet Height</b>	1.7 MTR
<b>Quantity of Layers Per Pallet</b>	14 Layers	<b>Pallet Gross Weight</b>	458 kg
<b>Quantity of Cases Per Pallet</b>	224 Cases		

PACKAGING

Inner Component Packaging						
Type	Materials	Weight	Recycled Plastic %	Recyclable	Returnable	Composite
Film	Plastic / LDPE (Low Density Polyethylene)	8 g	30 %	No	No	No
Outer Case Packaging						
Type	Materials	Weight	Recycled Plastic %	Recyclable	Returnable	Composite
Box	Paper/Cardboard / Carton Board	200 g	- %	Yes	No	No
Transport Packaging						
Type	Materials	Weight	Recycled Plastic %	Recyclable	Returnable	Composite
Pallet Wrap	Plastic / LDPE (Low Density Polyethylene)	350 g	30 %	No	No	No
Pallet	Wood	25000 g	- %	No	Yes	No

MARKETING INFORMATION

**Marketing Description**  
 A deliciously moist rich chocolate cake filled and covered with chocolate fudge icing before being hand decorated with a spiral swirl design.

OTHER INFORMATION

<b>Intrastat/Taric Code</b>	19059070
<b>Commodity Code</b>	1905907000

CONTACT INFORMATION

Address	Technical Contact
Mademoiselle Desserts (Taunton)	David Moran
Frobisher Way	Technical Manager
Bindon Road	d.moran@mdesserts.com
Taunton	
Somerset	
TA2 6AB	<u>P: (Phone)</u> 01823 257922
England	
<u>P: (Phone)</u> 01823 257922	

The information on the [Erudus System](#) has been supplied by the manufacturers of the products and, whilst the owners of the Erudus System take steps to ensure the information is regularly updated, they give no warranty and no guarantee that the information is accurate. Product information and ingredients may change, please always read product labels carefully in addition to using the information provided by Erudus.

We do not accept liability for any inaccuracies or incorrect information contained on this site.  
Please visit <http://www.erudus.com/terms-and-conditions> for full terms and conditions.