

**Thomas Ridley**  
FOODSERVICE

**RECEIVED**  
Thomas Ridley QC Dept.  
8:29 am, 10 Jul 2023

The food information supplied by Thomas Ridley Foodservice has been provided by the respective product manufacturers. Whilst we use reasonable endeavours to check this information and ensure its accuracy, we do not give any warranty (whether express or implied), guarantee or representation that it is true, accurate or complete in any respect.

As product information, ingredients, nutritional guides and dietary or allergy advice may change from time to time, we recommend that you always carefully read the product label prior to using or consuming any such products. You should not solely rely upon the information we provide and make your own assessment as to the suitability or otherwise of any given product.

## Cadbury Dairy Milk Chocolate Bar 45g



**EAN**

7622300743536

**Target market(s)**

GB, IE

## Components

### Ingredients

#### Milk\*\*

Sugar

Cocoa Butter

Cocoa Mass

Vegetable Fats (Palm, Shea)

Emulsifiers (E442, E476)

Flavourings

\*\*The equivalent of 426 ml of Fresh Liquid Milk in every 227 g of Milk Chocolate

Milk Solids 20 % minimum, actual 23 %

Cocoa Solids 20 % minimum

Contains Vegetable Fats in addition to Cocoa Butter

### Allergy Text

**May contain Nuts, Wheat.**

### Nutrition

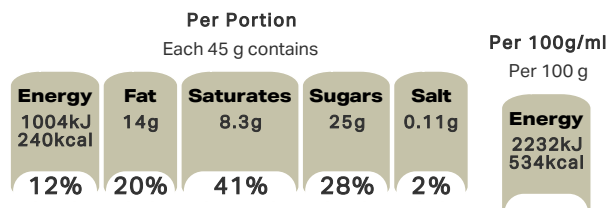
	Per 100 g	Per Bar (45 g)	*Reference Intakes
Energy	2232 kJ	1004 kJ	8400 kJ /
	534 kcal	240 kcal	2000 kcal
Fat	30 g	14 g	70 g
of which Saturates	18 g	8.3 g	20 g
Carbohydrate	57 g	26 g	260 g
of which Sugars	56 g	25 g	90 g
Fibre	2.1 g	0.9 g	-
Protein	7.3 g	3.3 g	50 g
Salt	0.24 g	0.11 g	6 g

\*% reference intake of an average adult (8400 kJ / 2000 kcal)

### Calculated Nutrition

	per 100g	Per Bar (45 g)
Energy (kJ)	2232	1004
Energy (kcal)	534	240
Fat (g)	30	14
of which saturates (g)	18	8.3
Carbohydrate (g)	57	26
of which sugars (g)	56	25
Fibre (g)	2.1	0.9
Protein (g)	7.3	3.3
Salt (g)	0.24	0.11

### Front of Pack Nutrition



% reference intake of an average adult (8400 kJ / 2000 kcal)

### Nutrition Other Text

% reference intake of an average adult (8400 kJ / 2000 kcal)

### Reference Intake Statement

Reference Intake Statement - % reference intake of an average adult (8400 kJ / 2000 kcal)

## Product Description

### Alternative Description

Supplier Preferred Product Name - Cadbury Dairy Milk Chocolate Bar 45g

### Brand

Cadbury

### Features

100% Sustainably Sourced Cocoa  
The Classic Creamy Taste  
Suitable for vegetarians

### Standardised Brand

Brand - Cadbury

### Regulated Product Name

Milk chocolate.

## Marketing

### Company Name

Mondelez UK / Mondelez Ireland

### Company Address

Mondelez UK,  
PO Box 7008,  
Birmingham,  
B30 2PT.

Mondelez Ireland,  
Malahide Road,  
Coolock,  
Dublin 5.

### Third Party Logos

- Green Dot

### Product Marketing

The one. The only. Made with a glass and a half of fresh milk from the British Isles and Ireland, for the classic, creamy taste that's unmistakably Cadbury. Still loved as much today as it was when it launched in 1904. Savour it solo or share with someone you cherish. Made with sustainably sourced cocoa. Vegetarian friendly.

### Manufacturer Marketing

By Appointment to H.M. The Queen Cocoa and Chocolate Manufacturers Cadbury UK Ltd., Bournville.

### Other Information

Made under licence from Cadbury UK Ltd.

### Further Description

BeTreatwise.net

Cocoa Life  
Partnering with Fairtrade Foundation  
[www.cocoalife.org](http://www.cocoalife.org)

## Health & Lifestyle

### Lifestyle

- Suitable for Vegetarians

### Allergy Advice

Milk - Contains  
Nuts - May Contain  
Wheat - May Contain

## Storage & Usage

### Storage Type

#### Type

Ambient

### Storage

Store in a dry place. Protect from heat.

## Brandbank Captured Pack Data

### Pack Size

45g e

### Numeric Size

Numeric Size - 45

### Pack Type

Type - Wrap

### Recycling Other Text

### Usage Count

Number of uses - Servings

1

### Usage Other Text

1x Bar = 1 Portion. 1 portion per pack

## Customer Services

### Manufacturers Address

Mondelez UK,  
PO Box 7008,  
Birmingham,  
B30 2PT.

Mondelez Ireland,  
Malahide Road,  
Coolock,  
Dublin 5.

### Return To

We are passionate about our great quality Cadbury products. Not completely satisfied? Please contact us:  
Freephone 0800 818181 (UK only).

Mondelez UK,  
PO Box 7008,  
Birmingham,  
B30 2PT.

Mondelez Ireland,  
Freephone 1-800 678708  
Malahide Road,  
Coolock,  
Dublin 5.  
[www.cadbury.co.uk](http://www.cadbury.co.uk)

### Telephone Helpline

0800 818181 (UK)  
1-800 678708

### Fax Number

### Email Helpline

### Web Address

[www.cadbury.co.uk](http://www.cadbury.co.uk)

### Social Media

## Extended Data

### SEO Metatag

Dairy Milk, Dairy Milk Chocolate, Cadbury Dairy Milk, Is Dairy Milk Gluten Free, Milk Chocolate, Classic Chocolate, Sustainably Sourced Cocoa, Vegetarian Chocolate, Creamy Chocolate, Classic Dairy Milk

