


Changed Jan 11, 2024 18:36

Reviewed Jan 11, 2024 18:36

Erudus ID 301511b05f0e43d9942ef4794a0a4393


Version 2.0



**Thomas Ridley**  
FOODSERVICE

**RECEIVED**

Thomas Ridley QC Dept.  
11:04 am, 12 Jan 2024



erudus  
United around food data

The food information supplied by Thomas Ridley Foodservice has been provided by the respective product manufacturers. Whilst we use reasonable endeavours to check this information and ensure its accuracy, we do not give any warranty (whether express or implied), guarantee or representation that it is true, accurate or complete in any respect.

As product information, ingredients, nutritional guides and dietary or allergy advice may change from time to time, we recommend that you always carefully read the product label prior to using or consuming any such products. You should not solely rely upon the information we provide and make your own assessment as to the suitability or otherwise of any given product.

# Chocolate Fruit & Nut Slice 1x946g

CHOCOLATE FRUIT & NUT SLICE (1 x 12 ptn)

## PRODUCT DESCRIPTION

Crushed digestive biscuits, sultanas, walnuts and cherries bound together in a chocolate fudge mixture, topped with plain chocolate and finished with a milk chocolate drizzle.

Brand	The Handmade Cake Co.
Manufacturer Product Code	070037
Product Type	Food
Product Category	Cakes and Tarts
Storage Type	Frozen
Erudus ID	301511b05f0e43d9942ef4794a0a4393
Specification Type	Bakery Products



Outer Case GTIN 5060044070037



## INGREDIENTS

### Ingredient Declaration

Digestive Biscuits [**WHEAT** Flour (with Calcium Carbonate, Iron, Niacin, Thiamin), Palm Oil, Sugar, Wholemeal **WHEAT** Flour, Partially Inverted Sugar Syrup, Raising Agents (E500, E503), Salt], Dark Chocolate (25%) [Cocoa Mass, Sugar, Cocoa Butter, Emulsifier (Lecithins (**SOYA**)), Natural Vanilla Flavouring], Sweetened Condensed **Milk** (Whole **MILK**, Sugar), Vegetable Margarine [Palm Oil, Rapeseed Oil, Water, Salt, Emulsifier (E471), Natural Flavouring], Sultanas (6%), **WALNUTS** (5%), Glacé Cherries (2.4%) [Cherries, Glucose-Fructose Syrup, Sugar, Acidity Regulator (Citric Acid), Colour (Anthocyanins)], Milk Chocolate (1.4%) [Sugar, Cocoa Butter, Whole **MILK** Powder, Cocoa Mass, Emulsifier (Lecithins (**SOYA**)), Natural Vanilla Flavouring].

## ALLERGENS

Product Contains:

<b>Celery/Celeriac</b>	No	<b>Mustard</b>	No
<b>Cereals Containing Gluten</b>	Yes	<b>Nuts (Tree)</b>	Yes
<b>Barley</b>	No	<b>Almond nuts</b>	May Contain
<b>Oats</b>	No	<b>Brazil nuts</b>	May Contain
<b>Rye</b>	No	<b>Cashew nuts</b>	May Contain
<b>Wheat (including Spelt and Khorasan)</b>	Yes	<b>Hazelnuts</b>	May Contain
<b>Crustacea</b>	No	<b>Macadamia (Queensland) nuts</b>	May Contain
<b>Eggs</b>	May Contain	<b>Pecan nuts</b>	May Contain
<b>Fish</b>	No	<b>Pistachio nuts</b>	May Contain
<b>Lupin</b>	No	<b>Walnuts</b>	Yes
<b>Milk</b>	Yes	<b>Peanuts</b>	No
<b>Molluscs</b>	No	<b>Sesame Seeds</b>	No
		<b>Soybeans</b>	Yes
		<b>Sulphur Dioxide and Sulphites</b>	No

Risk Source:

<b>Eggs (Risk Source)</b>	Factory	<b>Almond nuts (Risk Source)</b>	Factory
<b>Brazil nuts (Risk Source)</b>	Raw Material	<b>Cashew nuts (Risk Source)</b>	Raw Material
<b>Hazelnuts (Risk Source)</b>	Factory	<b>Macadamia nuts (Risk Source)</b>	Raw Material
<b>Pecan nuts (Risk Source)</b>	Factory	<b>Pistachio nuts (Risk Source)</b>	Factory

SUPPLEMENTARY INGREDIENT INFORMATION

<b>Palm Oil</b>	Yes
<b>Hydrogenated Vegetable Oil/Fat</b>	No
<b>GM Protein/DNA</b>	No

ADDITIVES

Product Contains:

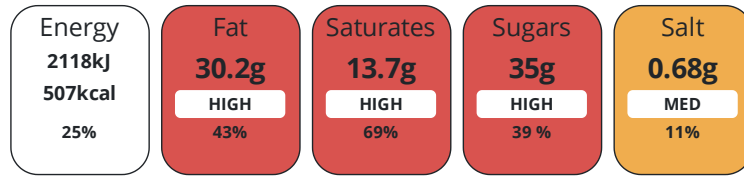
<b>Artificial Antioxidants</b>	No	<b>Artificial Flavourings</b>	No
<b>Artificial Colours</b>	No	<b>Artificial Preservatives</b>	No
<b>Artificial Flavour Enhancers</b>	No	<b>Artificial Sweeteners</b>	No

DIET SUITABILITY

<b>Vegan Diet</b>	No	<b>Vegetarian Diet</b>	Suitable for
<b>Halal Diet</b>	No	<b>Kosher Diet</b>	No

NUTRITIONAL INFORMATION

Each 100g/ml portion contains:



of your reference intake.

Typical values per 100g/ml : Energy 507kcal / 2118kJ

Nutrient	per 100g	RI per 100g	per 79g serving	RI per 79g serving
<b>Energy (kJ)</b>	2118 kJ	25%	1673.2 kJ	20%
<b>Energy (kcal)</b>	507 kcal	25%	400.5 kcal	20%
<b>Fat</b>	30.2 g	43%	23.9 g	34%
<b>of which Saturates</b>	13.7 g	69%	10.8 g	54%
<b>Carbohydrate</b>	50.5 g	19%	39.9 g	15%
<b>of which Sugars</b>	35 g	39%	27.7 g	31%
<b>Fibre</b>	4.1 g		3.2 g	
<b>Protein</b>	6.2 g	12%	4.9 g	10%
<b>Salt</b>	0.68 g	11%	0.5 g	8%

**Serving Size** 79 g

**Source of Nutritional Information** Calculation based on known values of ingredients

SUPPLEMENTARY NUTRITIONAL INFORMATION

HFSS (HIGH IN FAT, SALT AND SUGAR)

**HFSS Status** 1

HANDLING & STORAGE INFORMATION

**Directions For Use**

Defrost at room temperature, in the plastic wrapper, for 2 hours. Please re-cut around the portions before removing from the tray. Once defrosted store in a cool place, in an airtight container. Do not refreeze once defrosted. Consume within 5 days.

**Storage Instructions**

Keep frozen, store at -18°C or below.

<b>Shelf Life from Time of Production</b>	365 Days	<b>Exempt From Shelf Life Labelling</b>	No
-------------------------------------------	----------	-----------------------------------------	----

ACCREDITATIONS/ CERTIFICATIONS/ ASSURANCE SCHEMES



**Other Accreditation**

N/A

ORIGIN

**Product Country of Origin/Place of** United Kingdom

**Provenance**

**Additional Origin Details**

-

PRODUCT CHARACTERISTICS

Standards Testing

<b>Do you undertake trend analysis of microbiological results?</b>	Yes	<b>Is shelf life testing undertaken?</b>	Yes
--------------------------------------------------------------------	-----	------------------------------------------	-----

Microbiological Standards

Organism	Description	Frequency	Target	Maximum	Sample (g or ml)
Enterobacteriaceae (cfu/g or ml)		Annually	<10	10000	1
Staphylococcus Aureus (cfu/g or ml)		Annually	<20	100	1
Salmonella (cfu/g or ml)	Detected/Not detected in 25g	Annually	=0	1	25

Physical Standards

Test	Description	Frequency	Target	Range	Sample (g or ml)
Weight (g)		Every Batch	>946	946 to 1146	946
Dimensions Height (mm)		Every Batch	>18	18 to 38	946

HAZARD CONTROLS

<b>Metal Detection</b>	Yes
------------------------	-----

CONFIGURATION

Case Configuration Inner Pack Configuration

<b>Total Quantity of Inner Components in Outer Case</b>	1 Units
---------------------------------------------------------	---------

<b>Is the Outer Case Splittable?</b>	No
--------------------------------------	----

PRODUCT WEIGHTS

Inner Component

<b>Variable Weight Consumer Item</b>	No
--------------------------------------	----

<b>Inner Component Weight</b>	946 g
-------------------------------	-------

<b>e mark</b>	No
---------------	----

Outer Case

<b>Outer Case Gross Weight</b>	1.06 kg
--------------------------------	---------

<b>Outer Case Net Weight</b>	0.95 kg
------------------------------	---------

PRODUCT DIMENSIONS

Inner Component	
<b>Inner Component Depth</b>	320 mm
<b>Inner Component Width</b>	200 mm
<b>Inner Component Height</b>	18 mm
Outer Case	
<b>Outer Case Depth</b>	322 mm
<b>Outer Case Width</b>	203 mm
<b>Outer Case Height</b>	40 mm

PALLET INFORMATION

<b>Quantity of Cases Per Pallet Layer</b>	16 Cases	<b>Pallet Height</b>	0.95 MTR
<b>Quantity of Layers Per Pallet</b>	20 Layers	<b>Pallet Gross Weight</b>	364.8 kg
<b>Quantity of Cases Per Pallet</b>	320 Cases		

PACKAGING

Inner Component Packaging						
Type	Materials	Weight	Recycled Plastic %	Recyclable	Returnable	Composite
Tray	Plastic	3 g	- %			
Tray	Aluminium	24 g	- %			
Outer Case Packaging						
Type	Materials	Weight	Recycled Plastic %	Recyclable	Returnable	Composite
Case	Paper/Cardboard	82 g	- %			
Transport Packaging						
Type	Materials	Weight	Recycled Plastic %	Recyclable	Returnable	Composite
Other	Plastic	0.93 g	- %			
Other	Paper/Cardboard	0.93 g	- %			
Other	Wood	78.13 g	- %			

OTHER INFORMATION

<b>Intrastat/Taric Code</b>	19053119
<b>Commodity Code</b>	1905311900

**Manufacturer Comments**

Transit packaging is given per case based on a full pallet load.

CONTACT INFORMATION

Address	Technical Contact
The Handmade Cake Co.	Technical Team
The Bakery	Maidenhead.Technical@mdesserts.com
Gardner Road	
Maidenhead	P: (Phone) 01628 770908 Ext. 1052
Berkshire	
SL6 7TU	
United Kingdom	
P: (Phone) 01628 770908	

The information on the [Erudus System](#) has been supplied by the manufacturers of the products and, whilst the owners of the Erudus System take steps to ensure the information is regularly updated, they give no warranty and no guarantee that the information is accurate. Product information and ingredients may change, please always read product labels carefully in addition to using the information provided by Erudus.

We do not accept liability for any inaccuracies or incorrect information contained on this site. Please visit <http://www.erudus.com/terms-and-conditions> for full terms and conditions.