

44111

Hartley's sugar free jelly orange flavour 12 x 115g e

Orange Flavour Jelly With Sweeteners

PRODUCT DESCRIPTION

orange flavour jelly made with sweeteners

Brand	Hain Daniels Group
Manufacturer Product Code	10000707
Product Type	Food
Product Category	Desserts
Storage Type	Ambient
Erudus ID	81159660a92847e69cbb964f7d505bb5
Specification Type	Legacy
Inner Component GTIN	50126002
Outer Case GTIN	5000117081683



INGREDIENTS

Ingredient Declaration

Water, Gelling Agents (Gellan Gum, Xanthan Gum, Locust Bean Gum, Cassia Gum), Acid (Citric Acid), Acidity Regulator (Potassium Citrate), Flavouring, Sweeteners (Aspartame, Acesulfame K), Carthamus Extract, Carrot Juice Concentrate, Colour (Paprika Extract).
Contains a source of phenylalanine.

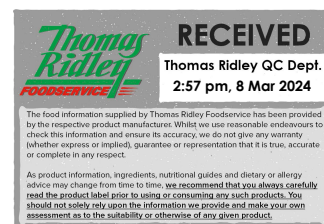
ALLERGENS

Product Contains:

Celery/Celeriac	No	Mustard	No
Cereals Containing Gluten	No	Nuts (Tree)	No
Barley	No	Almond nuts	No
Oats	No	Brazil nuts	No
Rye	No	Cashew nuts	No
Wheat (including Spelt and Khorasan)	No	Hazelnuts	No
Crustacea	No	Macadamia (Queensland) nuts	No
Eggs	No	Pecan nuts	No
Fish	No	Pistachio nuts	No
Lupin	No	Walnuts	No
Milk	No	Peanuts	No
Molluscs	No	Sesame Seeds	No
		Soybeans	No
		Sulphur Dioxide and Sulphites	No

SUPPLEMENTARY INGREDIENT INFORMATION

Palm Oil	No
Hydrogenated Vegetable Oil/Fat	No
GM Protein/DNA	No



ADDITIVES

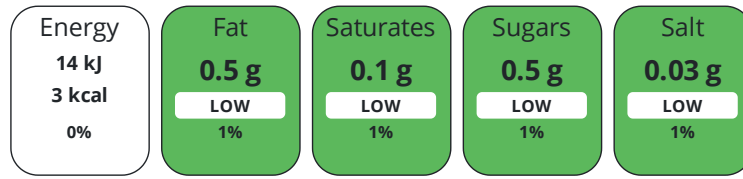
Product Contains:

Artificial Antioxidants	No	Artificial Flavourings	No
Artificial Colours	No	Artificial Preservatives	No
Artificial Flavour Enhancers	No	Artificial Sweeteners	Yes
Suitable for Coeliacs	No	Halal Diet	No
Kosher Diet	No	Vegetarian Diet	Suitable for
Vegan Diet	Suitable for		

DIET SUITABILITY

NUTRITIONAL INFORMATION

Each 100g/ml portion contains:



of your reference intake.

Typical values per 100g/ml : Energy 3kcal / 14kJ

Nutrient	per 100g/ml	RI per 100g/ml	per 115g/ml serving	RI per 115g/ml serving
Energy (kJ)	14 kJ	0%	16.1 kJ	0%
Energy (kcal)	3 kcal	0%	3.5 kcal	0%
Fat	< 0.5 g	1%	0.6 g	1%
of which Saturates	< 0.1 g	1%	0.1 g	1%
Carbohydrate	< 0.5 g	0%	0.6 g	0%
of which Sugars	< 0.5 g	1%	0.6 g	1%
Protein	< 0.5 g	1%	0.6 g	1%
Salt	0.03 g	1%	-	
Serving Size	115 g			

SUPPLEMENTARY NUTRITIONAL INFORMATION

HANDLING & STORAGE INFORMATION

Directions For Use

Ready to eat.

Storage Instructions

Keep me in the cupboard or pop me in the fridge for even better results.

Shelf Life from Time of Production 270 Days

ACCREDITATIONS/ CERTIFICATIONS/ ASSURANCE SCHEMES



ORIGIN

Product Country of Origin/Place of United Kingdom

Provenance

Additional Origin Details

Made in the UK.

PRODUCT CHARACTERISTICS

Standards Testing

	Do you undertake trend analysis of microbiological results?	No	Is shelf life testing undertaken?	No			
CONFIGURATION	Case Configuration		Inner Pack Configuration				
	Total Quantity of Inner Components in Outer Case	12 Units					
	Is the Outer Case Splittable?	Yes					
PRODUCT WEIGHTS	Inner Component						
	Variable Weight Consumer Item	Yes					
	Inner Component Weight	115 g					
	Weight/Volume						
	115g e						
	Outer Case						
	Outer Case Gross Weight	1.54 kg					
	Outer Case Net Weight	1.38 kg					
PRODUCT DIMENSIONS	Inner Component						
	Inner Component Depth	71 mm					
	Inner Component Width	71 mm					
	Inner Component Height	60 mm					
	Outer Case						
	Outer Case Depth	283 mm					
	Outer Case Width	211 mm					
	Outer Case Height	62 mm					
PALLET INFORMATION	Quantity of Cases Per Pallet Layer	18 Cases	Pallet Height	1.2 MTR			
	Quantity of Layers Per Pallet	17 Layers	Pallet Gross Weight	445 kg			
	Quantity of Cases Per Pallet	306 Cases					
PACKAGING	Inner Component Packaging						
	Type	Materials	Weight	Recycled Plastic %	Recyclable	Returnable	Composite
	Pot	Plastic	10 g	- %			
	Pot	Paper/Cardboard	2.6 g	- %			
	Pot	Aluminium	1 g	- %			
	Outer Case Packaging						
	Type	Materials	Weight	Recycled Plastic %	Recyclable	Returnable	Composite
	Case	Plastic	44 g	- %			
	Case	Paper/Cardboard	1 g	- %			
	Transport Packaging						
	Type	Materials	Weight	Recycled Plastic %	Recyclable	Returnable	Composite
	Other	Wood	27500 g	- %		Yes	
OTHER INFORMATION	Commodity Code	2106909260					

CONTACT
INFORMATION

Address

Hain Daniels Group
Templar House, 4225 Park Approach
Thorpe Park
Leeds
Yorkshire
LS15 8GB
England

P. (Phone) 03300551638

Commercial Contact

Mike Watson; Zeke Mellor
Customer Manager / Business Development Manager
Mike.Watson@haindaniels.com

The information on the [Erudus System](#) has been supplied by the manufacturers of the products and, whilst the owners of the Erudus System take steps to ensure the information is regularly updated, they give no warranty and no guarantee that the information is accurate. Product information and ingredients may change, please always read product labels carefully in addition to using the information provided by Erudus.

We do not accept liability for any inaccuracies or incorrect information contained on this site.
Please visit <http://www.erudus.com/terms-and-conditions> for full terms and conditions.