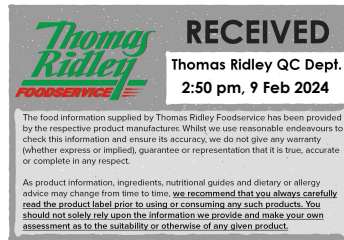


Changed Feb 09, 2024 13:34

Reviewed Feb 09, 2024 13:34

Erudus ID 9e1a562a54144ad093559016e6cabd8a

Version 2.0



Thomas Ridley
FOODSERVICE

RECEIVED
Thomas Ridley QC Dept.
2:50 pm, 9 Feb 2024

The food information supplied by Thomas Ridley Foodservice has been provided by the respective product manufacturer. Whilst we use reasonable endeavours to check this information and ensure its accuracy, we do not give any warranty (whether express or implied), guarantee or representation that it is true, accurate or complete in any respect.

As product information, ingredients, nutritional guides and dietary or allergy advice may change from time to time, we recommend that you always carefully read the product label prior to using or consuming any such products. You should not solely rely upon the information we provide and make your own assessment as to the suitability or otherwise of any given product.



Coffee Shop Treacle Tart

Coffee Shop Treacle Tart

PRODUCT DESCRIPTION

Traditional English tart made with breadcrumbs and syrup filling in a sweet pastry case.

Brand	Chantilly Patisserie
Manufacturer Product Code	01-14-003-6942
Product Type	Food
Product Category	Desserts
Storage Type	Frozen
Erudus ID	9e1a562a54144ad093559016e6cabd8a
Specification Type	Bakery Products



Outer Case GTIN 5060076946942



INGREDIENTS

Ingredient Declaration

Golden Syrup (51%), Pastry Case (14%) (Wheat Flour (**WHEAT** Flour, Calcium Carbonate, Iron, Niacin, Thiamin), Cake Margarine (Palm & Rapeseed Oil, Salt, Water, Natural Flavouring), Sugar), White Bread (Wheat Flour (**WHEAT** Flour, Calcium Carbonate, Iron, Niacin, Thiamin), Water, Yeast, Salt, Vinegar, **SOYA** Flour, Emulsifier (Mono & Diacetyl-tartaric Acid Esters of Fatty Acids), Antioxidant (Ascorbic Acid)), **OATS**, Lemon Juice, Ginger.

ALLERGENS

Product Contains:

Celery/Celeriac	No	Mustard	No
Cereals Containing Gluten	Yes	Nuts (Tree)	May Contain
Barley	May Contain	Almond nuts	May Contain
Oats	Yes	Brazil nuts	No
Rye	No	Cashew nuts	No
Wheat (including Spelt and Khorasan)	Yes	Hazelnuts	May Contain
Crustacea	No	Macadamia (Queensland) nuts	No
Eggs	May Contain	Pecan nuts	May Contain
Fish	No	Pistachio nuts	May Contain
Lupin	No	Walnuts	No
Milk	May Contain	Peanuts	No
Molluscs	No	Sesame Seeds	No
		Soybeans	Yes
		Sulphur Dioxide and Sulphites	No

Risk Source:

SUPPLEMENTARY INGREDIENT INFORMATION

Palm Oil	Yes
Hydrogenated Vegetable Oil/Fat	No
GM Protein/DNA	No

ADDITIVES

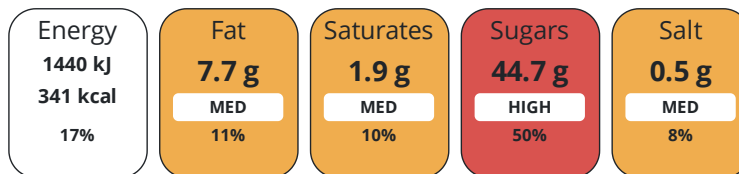
Product Contains:

Artificial Antioxidants	No	Artificial Flavourings	No
Artificial Colours	No	Artificial Preservatives	No
Artificial Flavour Enhancers	No	Artificial Sweeteners	No
Vegan Diet	No	Vegetarian Diet	Suitable for
Halal Diet	No	Kosher Diet	No

DIET
SUITABILITY

NUTRITIONAL
INFORMATION

Each 100g/ml portion contains:



of your reference intake.

Typical values per 100g/ml : Energy 341kcal / 1440kj

Nutrient	per 100g	RI per 100g
Energy (kJ)	1440 kJ	17%
Energy (kcal)	341 kcal	17%
Fat	7.7 g	11%
of which Saturates	1.9 g	10%
of which Mono-unsaturates	4.2 g	
of which Polyunsaturates	1.1 g	
Carbohydrate	64.6 g	25%
of which Sugars	44.7 g	50%
of which Starch	19.9 g	
Fibre	0.9 g	
Protein	3.5 g	7%
Salt	0.5 g	8%
Sodium	200 mg	

VITAMINS AND
MINERALS

Nutrient	per 100g	RI per 100g
Vitamin A	0 µg	0%
Vitamin C	0 mg	0%
Folate/Folic Acid	5 µg	3%
Calcium	25 mg	3%
Iron	0.5 mg	4%
Zinc	0.2 mg	2%

SUPPLEMENTARY
NUTRITIONAL
INFORMATION

Cholesterol per 100 g/ml (UK/FR)	0 g
Trans Fats per 100 g/ml	0 g
Fat Percentage in Dry Matter per 100 g/ml	0 %
Non Milk Extrinsic Sugars per 100 g/ml	44.5 g

HANDLING & STORAGE INFORMATION

Directions For Use

To defrost, remove all packaging & refrigerate for 12 hours. Once defrosted, keep refrigerated and use within 4 days. Do not re-freeze.

Storage Instructions

Store at -18°C

Shelf Life from Time of Production	730 Days	Exempt From Shelf Life Labelling	No
---	----------	---	----

ACCREDITATIONS/ CERTIFICATIONS/ ASSURANCE SCHEMES



Other Accreditation

None

ORIGIN

Product Country of Origin/Place of United Kingdom

Provenance

Additional Origin Details

N/A

PRODUCT CHARACTERISTICS CONFIGURATION

Standards Testing

Case Configuration

Inner Pack Configuration

Total Quantity of Inner Components in 1 Units

Outer Case

Is the Outer Case Splittable? No

PRODUCT WEIGHTS

Inner Component

Variable Weight Consumer Item Yes

Net Drained Weight 0 g

Outer Case

Outer Case Gross Weight 1.44 kg

Outer Case Net Weight 1.2 kg

PRODUCT DIMENSIONS

Inner Component

Inner Component Depth 0 mm

Inner Component Width 260 mm

Inner Component Height 37 mm

Outer Case

Outer Case Depth 300 mm

Outer Case Width 295 mm

Outer Case Height 90 mm

PALLET INFORMATION

Quantity of Cases Per Pallet Layer 12 Cases

Pallet Height 1.5 MTR

Quantity of Layers Per Pallet 15 Layers

Pallet Gross Weight 259.2 kg

Quantity of Cases Per Pallet 180 Cases

PACKAGING

Inner Component Packaging

Type	Materials	Weight	Recycled Plastic %	Recyclable	Returnable	Composite
Box	Paper/Cardboard	85 g	- %			

Outer Case Packaging

Type	Materials	Weight	Recycled Plastic %	Recyclable	Returnable	Composite
Case	Paper/Cardboard	175 g	- %			

Transport Packaging

Type	Materials	Weight	Recycled Plastic %	Recyclable	Returnable	Composite
Other	Plastic	275 g	- %		Yes	
Other	Paper/Cardboard	500 g	- %		Yes	

OTHER INFORMATION

Intrastat/Taric Code 0

Manufacturer Comments

Minimum order quantities are for a single layer of product . Providing that a total minimum of 144 cases to a maximum 180 cases are ordered the pallet can consist of mixed products.

CONTACT INFORMATION

Address

Chantilly Patisserie
 Aspen Way Yalberton Industrial Estate
 Aspen Way
 Paignton
 Paignton
 TQ4 7QR
 England

P: (Phone) 01803 663434

Complaints Contact

Claire Dawson
 Technical Director
 cdawson@chantillypatisserie.co.uk

P: (Phone) +441803663434

Technical Contact

Claire Dawson
 Technical Director
 cdawson@chantillypatisserie.co.uk

P: (Phone) +441803663434

Commercial Contact

Andrew Hart
 Business Development Manager
 ahart@chantillypatisserie.co.uk

P: (Phone) +441803663434

The information on the [Erudus System](#) has been supplied by the manufacturers of the products and, whilst the owners of the Erudus System take steps to ensure the information is regularly updated, they give no warranty and no guarantee that the information is accurate. Product information and ingredients may change, please always read product labels carefully in addition to using the information provided by Erudus.

We do not accept liability for any inaccuracies or incorrect information contained on this site.
 Please visit <http://www.erudus.com/terms-and-conditions> for full terms and conditions.