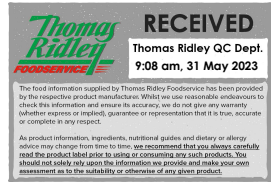


Supplier's Product Code : 1-30-010520
 Product Added : 24 February 2015
 Last Updated by Supplier : 17 August 2022
 erudus id : 684e428583df4e2ab00df3357dacc120



The information on the Erudus System has been supplied by the manufacturers of the products and, whilst the owners of the Erudus System take steps to ensure the information is regularly updated, they give no warranty and no guarantee that the information is accurate. Product information and ingredients may change, please always read product labels carefully in addition to using the information provided by Erudus One.

We do not accept liability for any inaccuracies or incorrect information contained on this site. Please visit <http://www.erudus.com/terms-and-conditions> for full terms and conditions.

Dr Oetker Bronze Leaf Gelatine (1kg)

Short Product Name:
Bronze Leaf Gelatine

Product Description:
Bronze leaf gelatine, which gives a clear and untainted finish to flans, jellies and mousses. It is ideal for use in both sweet and savoury cooking and gives a softer, more refined texture than that of traditional powdered gelatine.

General Information

Food/Drink :	Food
Product Category :	Ambient
Generic Product Type :	Bakery

Supplier's Product Code :
1-30-010520

Supplier: Dr. Oetker (UK) Ltd
4600 Park Approach
Thorpe Park
Leeds
West Yorkshire
LS15 8GB
England
P: 0113 823 1400

OUTER PRODUCT

Outer case Information

Outer Case GTIN :	05000254521622	Outer Case Length :	80 mm
Packaging Type Description :	Case	Outer Case Width :	120 mm
Total Quantity of Inner Units in Outer Case :	1 Units	Outer Case Height :	235 mm
Is Trade Item Splittable? :	Yes	Product Gross Weight :	1.10 kg
		Product Net Weight :	1.00 kg

Pallet Information

Quantity of Cases Per Pallet Layer :	75 Cases	Pallet Height :	1.70 MTR
Quantity of Layers Per Pallet :	7 Layers	Pallet Gross Weight :	605.00 kg
Quantity of Cases Per Pallet :	525 Cases		

Logistical Information

Shelf Life from Time of Production :	1,095 Days	Minimum Order Quantity :	75 Cases
Guaranteed Shelf Life on Delivery :	986 Days	Delivery Lead Time :	7 Days

Waste Packaging Weight - Outer Case

Glass :	0.00 g	Aluminium :	0.00 g
Plastic :	0.00 g	Steel :	0.00 g
Percentage Recycled Plastic :	Not specified.	Other :	0.00 g
Paper/Board :	40.00 g		

Waste Packaging Weight - Transport Packaging

Plastic :	Not specified.	Wood Total :	Not specified.
Paper/Board :	Not specified.	Is Pallet Returnable? :	-
Percentage Recycled Plastic :	Not specified.		

Other Information

Supplier Comments:
n/a

INNER PRODUCT

Origin Information

Product Country of Origin/Place of Provenance :	Other
---	-------

Additional Origin Details :
EU

Inner Pack Information

Internal GTIN :	5000254521622
-----------------	---------------

Packaging Type Description :	Box
------------------------------	-----

Variable Weight Consumer Item :	No
---------------------------------	----

Net Drained Weight :	Not specified.
----------------------	----------------

Inner Unit Length :	80 mm
---------------------	-------

Inner Unit Height :	235 mm
---------------------	--------

Inner Unit Width :	120 mm
--------------------	--------

Inner Product Weight :	Not specified.
------------------------	----------------

Inner Product Weight Units :	g
------------------------------	---

Weight/Volume :
1kg

Handling Information

Directions For Use :

Soak the gelatine leaves in cold water for 5 minutes. Squeeze out excess water. Place the soaked leaves in a saucepan and over a very low heat, melt slowly. Do not let the mixture boil as this can prevent a good set being achieved. If using cold ingredients (e.g. cream), add small amount of the cold liquid in a pan with the gelatine and heat until dissolved. Gradually add the rest of the cold ingredient to the gelatine mixture. Never the other way around.

Storage Instructions :

Store in a cool, dry place.

Dietary Information

Ingredients :

Gelatine (Pork).

Product contains:

GM Protein/DNA :	No
Celery/Celeriac (and products thereof) :	No
Lupin (and products thereof) :	No
Eggs (and products thereof) :	No
Fish (and products thereof) :	No
Soybeans (and products thereof) :	No
Milk (and products thereof) :	No
Mustard (and products thereof) :	No
Peanuts (and products thereof) :	No
Sesame Seeds (and products thereof) :	No
Crustacea (and products thereof) :	No
Molluscs (and products thereof) :	No
Nuts (and products thereof) :	No
Almond nuts :	No
Hazelnuts :	No
Walnuts :	No
Cashew nuts :	No
Pecan nuts :	No
Brazil nuts :	No
Pistachio nuts :	No
Macadamia nuts :	No
Queensland nuts :	No
Cereals Containing Gluten :	No
Wheat (and products thereof) :	No
Rye (and products thereof) :	No
Barley (and products thereof) :	No
Oats (and products thereof) :	No
Spelt (and products thereof) :	No
Kamut (and products thereof) :	No
Gluten content <20ppm :	-
Hydrogenated Vegetable Oil/Fat :	No
Palm Oil :	No
Sulphur Dioxide and Sulphites :	No
Sulphur Dioxide/Sulphites Concentration :	0

Product contains :

Artificial Antioxidants :	No
Artificial Colours :	No
Artificial Flavourings :	No
Artificial Flavour Enhancers :	No
Artificial Preservatives :	No
Artificial Sweeteners :	No

Product suitability:

Suitable for a Vegetarian Diet :	No
Suitable for a Vegan Diet :	No
Suitable for Sufferers of Lactose Intolerance :	Yes
Suitable for Coeliacs :	No
Approved for a Halal Diet :	No
Approved for a Kosher Diet :	No
HFSS (High in Fat, Salt and Sugar) :	-

Allergen Statement :

Not specified.

Nutritional Information

Average Serving :	Not specified.
Count per 100g :	1 Pieces
Count Per Pack :	Not specified.
Energy per 100 G/ML :	1,444.00 kJ
Energy per 100 G/ML :	336.00 kcal
Fat per 100 G/ML :	0.6 g
- of which Saturates per 100 G/ML :	0.3 g
- of which Mono-unsaturates per 100 G/ML :	Not specified.
- of which Polyunsaturates per 100 G/ML :	Not specified.
Trans Fats per 100 G\ML :	Not specified.
Carbohydrate Per 100 G/ML :	0 g
- of which Sugars per 100 G/ML :	0 g
- of which Polyols per 100 G/ML :	Not specified.
- of which Starch per 100 G/ML :	Not specified.
Fibre per 100 G/ML :	Not specified.
Protein per 100 G/ML :	84 g
Salt per 100 G/ML :	1 g
Sodium per 100 G\ML :	Not specified.

Vitamin A per 100g :	Not specified.
Vitamin C per 100g :	Not specified.
Folate/Folic Acid per 100g :	Not specified.
Calcium per 100g :	Not specified.
Iron per 100g :	Not specified.
Zinc per 100g :	Not specified.
Cholesterol per 100 G/ML (UK/FR) :	Not specified.
Non Milk Extrinsic Sugars per 100gm :	Not specified.
Alcoholic Strength %Vol :	Not specified.
Fat Percentage in Dry Matter per 100g :	Not specified.

Waste Packaging Weight - Inner Unit

Glass :	0.00 g
Plastic :	2.60 g
Percentage Recycled Plastic :	Not specified.
Paper/Board :	70.00 g

Aluminium :	0.00 g
Steel :	0.00 g
Other :	0.00 g

Accreditations / Certifications / Assurance Schemes

BRCGS Certified Production :	No
Red Tractor :	No
Fairtrade :	No
Marine Stewardship Council Certified (MSC) :	No
Organic :	No
SALSA (Safe & Local Supplier Approval) :	No
British Lion Mark :	No
RSPCA Assured :	No
LEAF Marque (Linking Environment and Farming) :	No
Rainforest Alliance :	No
Food for Life Supplier Scheme :	No
Quality Meat Scotland :	No
Farm Assured Welsh Livestock :	No
Northern Ireland Beef & Lamb Farm Quality Assurance Scheme :	No
Quality Standard Mark (Beef/Lamb) :	No
Roundtable of Sustainable Palm Oil (RSPO) :	No
School Approved (The Requirement for School Food Regulation 2014) :	No
IFS Food Standard :	No
Best Aquaculture Practices (BAP) Certification :	No
ISO 14001 (Environmental System) :	Yes
FSSC 22000 :	Yes

Other Accreditation :	
ISO 9001 ISO 22000	
Intra Stat/Taric Code :	350300100
Commodity Code :	Not specified.
Identification/Health Marks :	Not specified.

Standards Testing

Do you undertake trend analysis of
microbiological results? : -

Is shelf life testing undertaken? : -

Microbiological Standards

Not available.

Analytical Standards

Not available.